



## UK Office

### Everest Biotech Ltd

Cherwell Innovation Centre  
77 Heyford Park  
Upper Heyford  
Oxfordshire  
OX25 5HD  
UK

Enquiries:

[info@everestbiotech.com](mailto:info@everestbiotech.com)

Sales:

[sales@everestbiotech.com](mailto:sales@everestbiotech.com)

Tech support:

[support@everestbiotech.com](mailto:support@everestbiotech.com)

Tel: +44 (0)1869 238326

Fax: +44 (0)1869 238327

## US Office

### Everest Biotech c/o Abcore

405 Maple Street, Suite A106  
Ramona,  
CA 92065  
USA

Inquiries:

[info@everestbiotech.com](mailto:info@everestbiotech.com)

Sales:

[usasales@everestbiotech.com](mailto:usasales@everestbiotech.com)

Tech support:

[support@everestbiotech.com](mailto:support@everestbiotech.com)

Tel: 888-320-4628 (toll-free)

Fax: 888-841-9041

[www.everestbiotech.com](http://www.everestbiotech.com)

**Research Use Only. Not for  
diagnostic or therapeutic use.**

## EB12689 - Goat Anti-GNA12 Antibody

Size: 100µg specific antibody in 200µl



### Target Protein

**Principal Names:** GNA12, guanine nucleotide binding protein (G protein) alpha 12, NNX3, RMP, gep, G-protein subunit alpha-12, WUGSC:H\_GS165O14.2, g alpha-12, guanine nucleotide-binding protein subunit alpha-12

**Official Symbol:** GNA12

**Accession Number(s):** NP\_031379.2; NP\_001269369.1; NP\_001269370.1; NP\_001280021.1

**Human GeneID(s):** [2768](#)

**Non-Human GeneID(s):** 14673 (mouse), 81663 (rat)

**Important Comments:** This antibody is expected to recognize all reported isoforms (NP\_031379.2; NP\_001269369.1; NP\_001269370.1; NP\_001280021.1).

### Immunogen

Peptide with sequence C-KKHFPDFRGDPHR, from the internal region of the protein sequence according to NP\_031379.2; NP\_001269369.1; NP\_001269370.1; NP\_001280021.1.

Please note the [peptide](#) is available for sale.

### Purification and Storage

Purified from goat serum by ammonium sulphate precipitation followed by antigen affinity chromatography using the immunizing peptide.

Supplied at 0.5 mg/ml in Tris saline, 0.02% sodium azide, pH7.3 with 0.5% bovine serum albumin.

Aliquot and store at -20°C. Minimize freezing and thawing.

### Applications Tested

**Peptide ELISA:** antibody detection limit dilution 1:128000.

**Western blot:** Approx 37kDa band observed in Human Placenta lysates and approx 42kDa in Mouse Heart lysates (calculated MW of 37.6kDa according to Human NP\_001269370.1 and 44.1kDa according to Mouse NP\_034432.1). Recommended concentration: 0.3-1µg/ml.

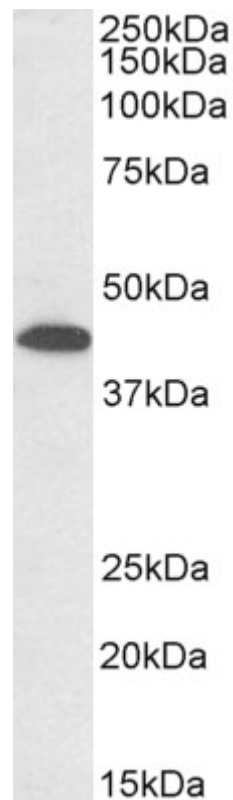
### Species Reactivity

**Tested:** Human, Mouse

**Expected from sequence similarity:** Human, Mouse, Rat, Dog, Pig, Cow



EB12689 (1 $\mu$ g/ml) staining of Human Placenta lysate (35 $\mu$ g protein in RIPA buffer). Primary incubation was 1 hour. Detected by chemiluminescence.



EB12689 (0.3 $\mu$ g/ml) staining of Mouse Heart lysate (35 $\mu$ g protein in RIPA buffer). Primary incubation was 1 hour. Detected by chemiluminescence.