



UK Office

Everest Biotech Ltd

Cherwell Innovation Centre
77 Heyford Park
Upper Heyford
Oxfordshire
OX25 5HD
UK

Enquiries:

info@everestbiotech.com

Sales:

sales@everestbiotech.com

Tech support:

support@everestbiotech.com

Tel: +44 (0)1869 238326

Fax: +44 (0)1869 238327

US Office

Everest Biotech c/o Abcore

405 Maple Street, Suite A106
Ramona,
CA 92065
USA

Inquiries:

info@everestbiotech.com

Sales:

usasales@everestbiotech.com

Tech support:

support@everestbiotech.com

Tel: 888-320-4628 (toll-free)

Fax: 888-841-9041

www.everestbiotech.com

**Research Use Only. Not for
diagnostic or therapeutic use.**

EB11980 - Goat Anti-GNAI2 (aa289-299) Antibody

Size: 100µg specific antibody in 200µl



Target Protein

Principal Names: GNAI2, guanine nucleotide binding protein (G protein), alpha inhibiting activity polypeptide 2, GIP, GNAI2B, H_LUCA15.1, H_LUCA16.1, GTP-binding regulatory protein Gi alpha-2 chain, adenylate cyclase-inhibiting G alpha protein, guanine nucleotide-binding protein G(i) subunit alpha-2, guanine nucleotide-binding protein G(i), alpha-2 subunit

Official Symbol: GNAI2

Accession Number(s): NP_002061.1; NP_001159897.1

Human GeneID(s): [2771](#)

Non-Human GeneID(s): 14678 (mouse), 81664 (rat)

Important Comments: This antibody is expected to recognize both reported isoforms (NP_002061.1; NP_001159897.1).

Immunogen

Peptide with sequence C-PEYTGANKYDE, from the internal region of the protein sequence according to NP_002061.1; NP_001159897.1.

Please note the [peptide](#) is available for sale.

Purification and Storage

Purified from goat serum by ammonium sulphate precipitation followed by antigen affinity chromatography using the immunizing peptide.

Supplied at 0.5 mg/ml in Tris saline, 0.02% sodium azide, pH7.3 with 0.5% bovine serum albumin.

Aliquot and store at -20°C. Minimize freezing and thawing.

Applications Tested

Peptide ELISA: antibody detection limit dilution 1:8000.

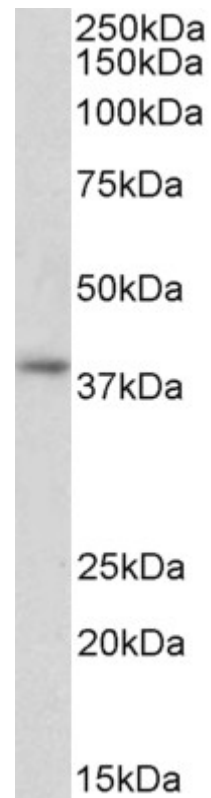
Western blot: Approx 38kDa band observed in Human Peripheral Blood Mononucleocytes lysates (calculated MW of 40.5kDa according to NP_002061.1). Recommended concentration: 1-3µg/ml. Primary incubation was 1 hour.

IHC: Paraffin embedded Human Thyroid and Tonsil. Recommended concentration: 5µg/ml.

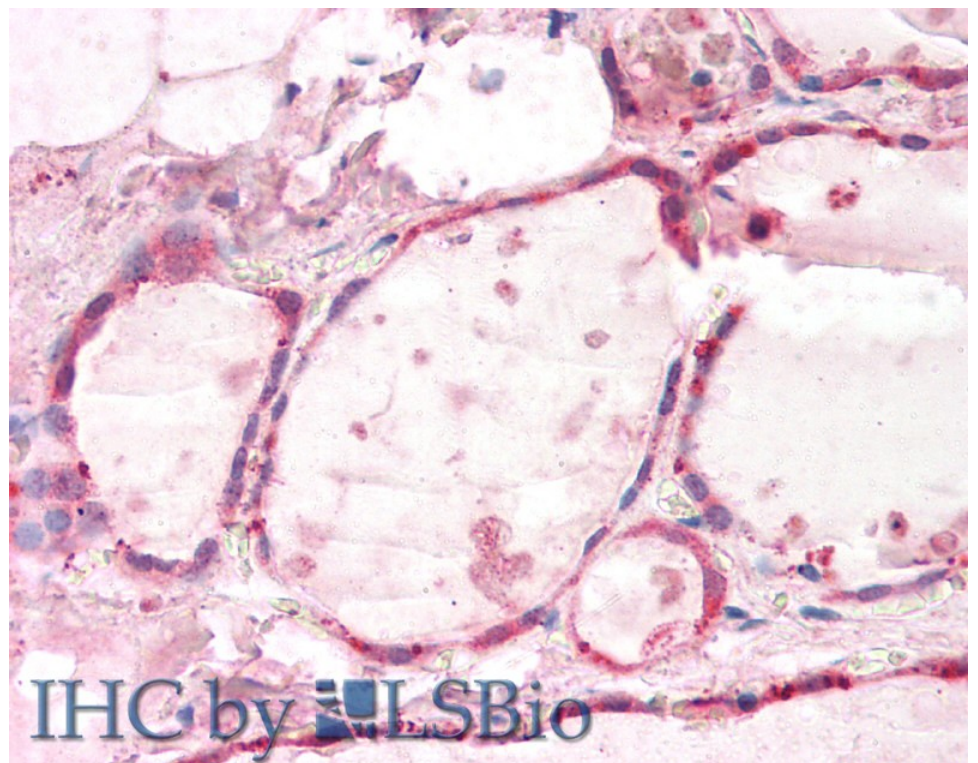
Species Reactivity

Tested: Human

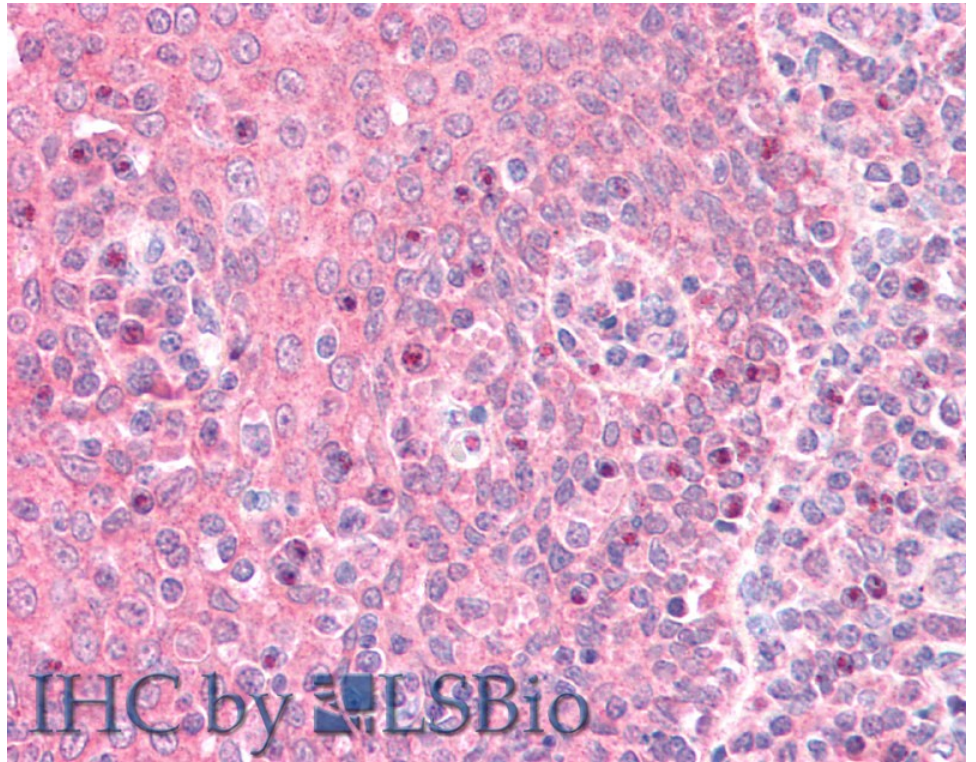
Expected from sequence similarity: Human, Mouse, Rat, Pig, Cow



EB11980 (2 μ g/ml) staining of Human Peripheral Blood Lymphocytes lysate (35 μ g protein in RIPA buffer).
Detected by chemiluminescence.



EB11980 (5 μ g/ml) staining of paraffin embedded Human Thyroid. Steamed antigen retrieval with citrate buffer pH 6, AP-staining.



EB11980 (5µg/ml) staining of paraffin embedded Human Tonsil. Steamed antigen retrieval with citrate buffer pH 6, AP-staining.