



## UK Office

### Everest Biotech Ltd

Cherwell Innovation Centre  
77 Heyford Park  
Upper Heyford  
Oxfordshire  
OX25 5HD  
UK

Enquiries:

[info@everestbiotech.com](mailto:info@everestbiotech.com)

Sales:

[sales@everestbiotech.com](mailto:sales@everestbiotech.com)

Tech support:

[support@everestbiotech.com](mailto:support@everestbiotech.com)

Tel: +44 (0)1869 238326

Fax: +44 (0)1869 238327

## US Office

### Everest Biotech c/o Abcore

405 Maple Street, Suite A106  
Ramona,  
CA 92065  
USA

Inquiries:

[info@everestbiotech.com](mailto:info@everestbiotech.com)

Sales:

[usasales@everestbiotech.com](mailto:usasales@everestbiotech.com)

Tech support:

[support@everestbiotech.com](mailto:support@everestbiotech.com)

Tel: 888-320-4628 (toll-free)

Fax: 888-841-9041

[www.everestbiotech.com](http://www.everestbiotech.com)

**Research Use Only. Not for  
diagnostic or therapeutic use.**

## EB10742 - Goat Anti-GNAQ / ALPHA-q (aa162-175) Antibody

Size: 100µg specific antibody in 200µl



### Target Protein

**Principal Names:** GNAQ, guanine nucleotide binding protein (G protein), q polypeptide, G-ALPHA-q, GAQ

**Official Symbol:** GNAQ

**Accession Number(s):** NP\_002063.2

**Human GeneID(s):** [2776](#)

**Non-Human GeneID(s):** 14682 (mouse), 81666 (rat)

### Immunogen

Peptide with sequence C-NDLDRVADPAYLPT, from the internal region of the protein sequence according to NP\_002063.2.

Please note the [peptide](#) is available for sale.

### Purification and Storage

Purified from goat serum by ammonium sulphate precipitation followed by antigen affinity chromatography using the immunizing peptide.

Supplied at 0.5 mg/ml in Tris saline, 0.02% sodium azide, pH7.3 with 0.5% bovine serum albumin.

Aliquot and store at -20°C. Minimize freezing and thawing.

### Applications Tested

**Peptide ELISA:** antibody detection limit dilution 1:64000.

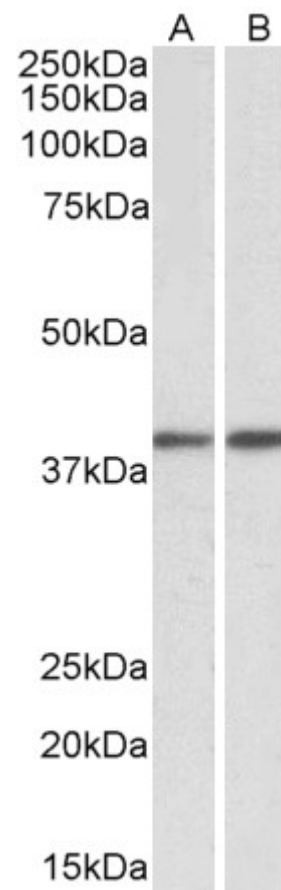
**Western blot:** Approx 40kDa band observed in Human, Mouse and Rat Testis lysates, in Pig Colon and Spleen lysates and in lysates of Human Peripheral Blood Mononucleocytes (calculated MW of 42.1kDa according to Human NP\_002063.2 and to Rat NP\_112298.1 ). Recommended concentration: 0.1-0.3µg/ml.

**IHC:** Paraffin embedded Human Kidney. Recommended concentration: 5µg/ml.

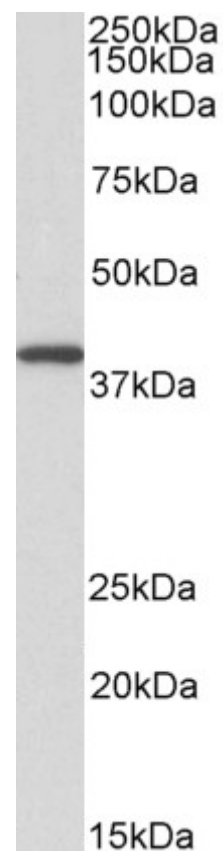
### Species Reactivity

**Tested:** Human, Mouse, Rat, Pig

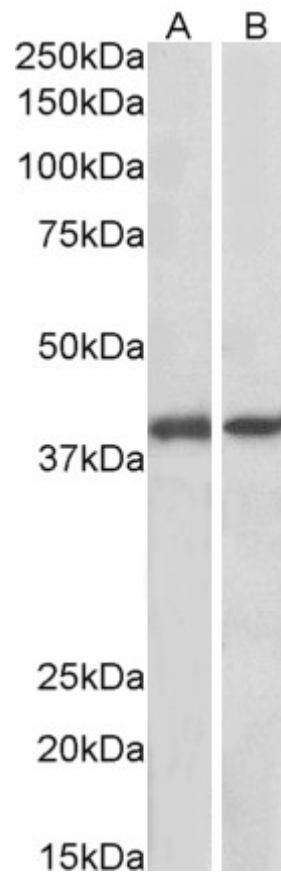
**Expected from sequence similarity:** Human, Mouse, Rat, Dog, Pig, Cow



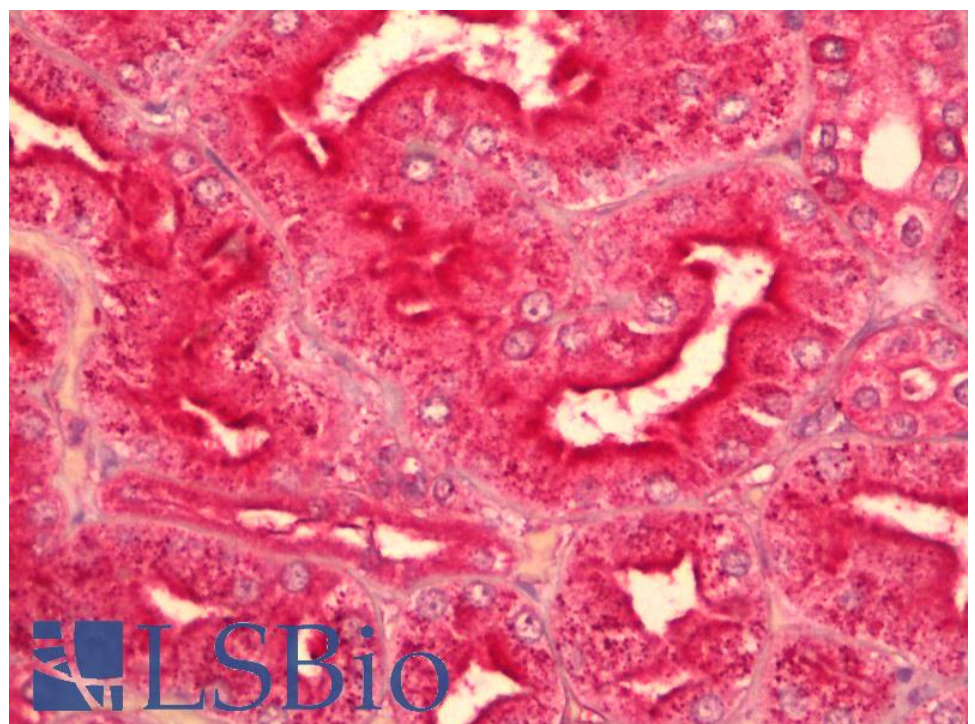
EB10742 (0.1 $\mu$ g/ml) staining of Mouse (A) and Rat (B) Testis lysates (35 $\mu$ g protein in RIPA buffer). Primary incubation was 1 hour. Detected by chemiluminescence.



EB10742 (0.1µg/ml) staining of Peripheral Blood Lymphocytes lysate (35µg protein in RIPA buffer). Primary incubation was 1 hour. Detected by chemiluminescence.



EB10742 (0.1µg/ml) staining of Pig Colon (A) and Pig Spleen (B) lysates (35µg protein in RIPA buffer). Primary incubation was 1 hour. Detected by chemiluminescence.



EB10742 (5µg/ml) staining of paraffin embedded Human Kidney. Steamed antigen retrieval with citrate buffer pH 6, AP-staining.