



## UK Office

### Everest Biotech Ltd

Cherwell Innovation Centre  
77 Heyford Park  
Upper Heyford  
Oxfordshire  
OX25 5HD  
UK

Enquiries:

[info@everestbiotech.com](mailto:info@everestbiotech.com)

Sales:

[sales@everestbiotech.com](mailto:sales@everestbiotech.com)

Tech support:

[support@everestbiotech.com](mailto:support@everestbiotech.com)

Tel: +44 (0)1869 238326

Fax: +44 (0)1869 238327

## US Office

### Everest Biotech c/o Abcore

405 Maple Street, Suite A106  
Ramona,  
CA 92065  
USA

Inquiries:

[info@everestbiotech.com](mailto:info@everestbiotech.com)

Sales:

[usasales@everestbiotech.com](mailto:usasales@everestbiotech.com)

Tech support:

[support@everestbiotech.com](mailto:support@everestbiotech.com)

Tel: 888-320-4628 (toll-free)

Fax: 888-841-9041

[www.everestbiotech.com](http://www.everestbiotech.com)

**Research Use Only. Not for  
diagnostic or therapeutic use.**

## EB10063 - Goat Anti-GNAS Antibody

Size: 100µg specific antibody in 200µl



### Target Protein

**Principal Names:** adenylate cyclase-stimulating G alpha protein, AHO, C20orf45, dJ309F20.1.1, GNAS complex locus, GNAS1, GPSA, GSA, GSP, MGC33735, NESP, OTTHUMP00000031742, OTTHUMP00000196026, OTTHUMP00000196030, PHP1A, PHP1B, POH, GNAS

**Official Symbol:** GNAS

**Accession Number(s):** NP\_000507.1; NP\_001070956.1; NP\_001070957.1

**Human GeneID(s):** [2778](#)

**Non-Human GeneID(s):** 14683 (mouse), 24896 (rat)

**Important Comments:** This antibody is expected to recognize all three reported isoforms NP\_000507.1, NP\_001070956.1 and NP\_536350.2. However, in Mouse it is expected to recognize reported isoforms GNASL (NP\_963910.1) and XLas (NP\_034439.2) only.

### Immunogen

Peptide with sequence C-QAARSNSDGEKATK, from the internal region of the protein sequence according to NP\_000507.1; NP\_001070956.1; NP\_001070957.1.

Please note the [peptide](#) is available for sale.

### Purification and Storage

Purified from goat serum by ammonium sulphate precipitation followed by antigen affinity chromatography using the immunizing peptide.

Supplied at 0.5 mg/ml in Tris saline, 0.02% sodium azide, pH7.3 with 0.5% bovine serum albumin.

Aliquot and store at -20°C. Minimize freezing and thawing.

### Applications Tested

**Peptide ELISA:** antibody detection limit dilution 1:32000.

**Western blot:** Approx. 45kDa band observed in Human Cerebellum, Mouse and Rat Brain lysates, and in lysates of cell line KNRK (calculated MW of 45.6kDa according to Human NP\_963910.1, Mouse NP\_963910.1 and Rat NP\_062005.1). Recommended concentration: 0.1-0.5µg/ml. Primary incubation 1 hour at room temperature.

### Species Reactivity

**Tested:** Human, Mouse, Rat

**Expected from sequence similarity:** Human, Mouse, Rat, Cow

### Specific Reference

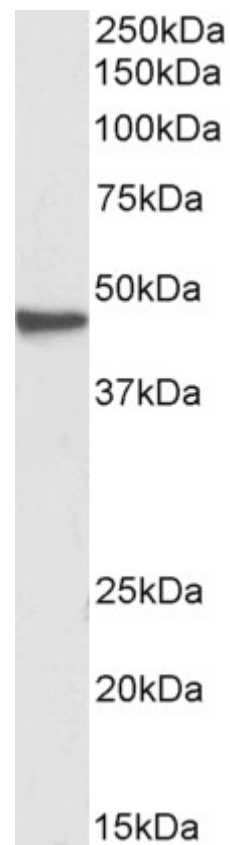
**This antibody (previous batch) has been successfully used in the following paper:**

Krzysztof Sikorski, Adi Mehta, Marit Inngjerdigen, Flourina Thakor, Simon Kling, Tomas Kalina, Tuula A. Nyman, Maria Ekman Stensland, Wei Zhou, Gustavo A. De Souza, Lars Holden, Jan Stuchly, Markus Templin and Fridtjof Lund-Johansen

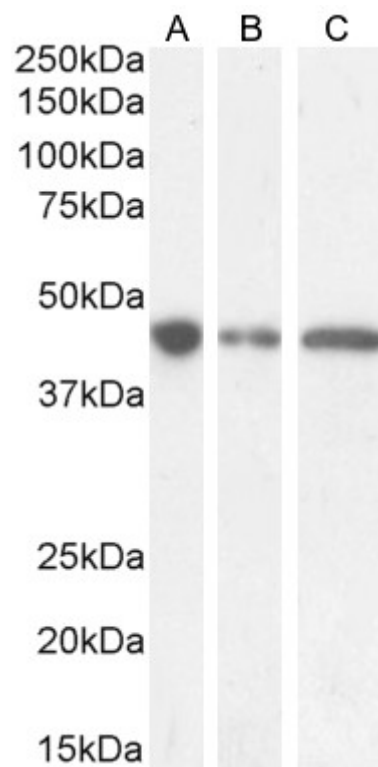
A high-throughput pipeline for validation of antibodies

Nat Methods. 2018 Nov;15(11):909-912

PMID: 30377371



EB10063 (0.3 $\mu$ g/ml) staining of KNRK cell lysate (35 $\mu$ g protein in RIPA buffer). Detected by chemiluminescence.



EB10063 (0.5 $\mu$ g/ml) staining of Human Cerebellum (A) and (0.1 $\mu$ g/ml) Mouse (B) and Rat (C) Brain lysate (35 $\mu$ g protein in RIPA buffer). Detected by chemiluminescence.