



UK Office

Everest Biotech Ltd

Cherwell Innovation Centre
77 Heyford Park
Upper Heyford
Oxfordshire
OX25 5HD
UK

Enquiries:

info@everestbiotech.com

Sales:

sales@everestbiotech.com

Tech support:

support@everestbiotech.com

Tel: +44 (0)1869 238326

Fax: +44 (0)1869 238327

US Office

Everest Biotech c/o Abcore

405 Maple Street, Suite A106
Ramona,
CA 92065
USA

Inquiries:

info@everestbiotech.com

Sales:

usasales@everestbiotech.com

Tech support:

support@everestbiotech.com

Tel: 888-320-4628 (toll-free)

Fax: 888-841-9041

www.everestbiotech.com

**Research Use Only. Not for
diagnostic or therapeutic use.**

EB08224 - Goat Anti-GNAT3 Antibody

Size: 100µg specific antibody in 200µl



Target Protein

Principal Names: GNAT3, guanine nucleotide binding protein, alpha transducing 3, tcag7.1053, GDCA, gustducin alpha-3

Official Symbol: GNAT3

Accession Number(s): NP_001095856.1

Human GeneID(s): [346562](#)

Non-Human GeneID(s): 242851 (mouse), 286924 (rat)

Immunogen

Peptide with sequence C-KNQFLDLNLKKEDKE, from the internal region of the protein sequence according to NP_001095856.1.

Please note the [peptide](#) is available for sale.

Purification and Storage

Purified from goat serum by ammonium sulphate precipitation followed by antigen affinity chromatography using the immunizing peptide.

Supplied at 0.5 mg/ml in Tris saline, 0.02% sodium azide, pH7.3 with 0.5% bovine serum albumin.

Aliquot and store at -20°C. Minimize freezing and thawing.

Applications Tested

Peptide ELISA: antibody detection limit dilution 1:32000.

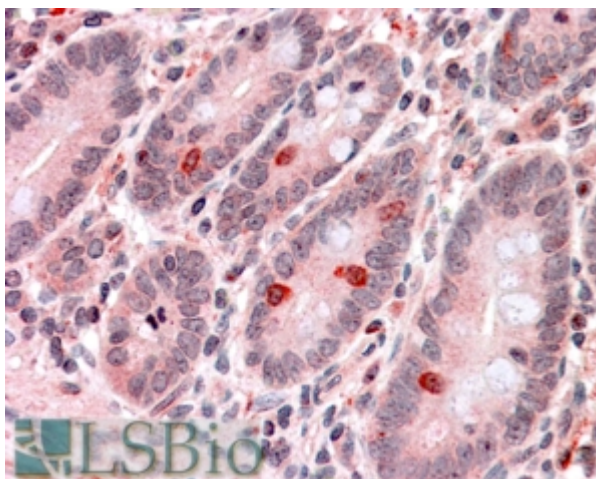
Western blot: Preliminary experiments gave an approx 27kDa band in Human Colon and Testis lysates and in cell lines NIH 3T3, A431 and Kelly after 0.1µg/ml antibody staining. Please note that currently we cannot find an explanation in the literature for the band we observe given the calculated size of 40.4kDa according to NP_001095856.1. The 27kDa band was successfully blocked by incubation with the immunizing peptide.

IHC: In paraffin embedded Human Small Intestine shows staining of endocrine cells amongst the enterocytes. Recommended concentration: 3-6µg/ml.

Species Reactivity

Tested: Human

Expected from sequence similarity: Human, Mouse, Rat, Dog



EB08224 (3.8µg/ml) staining of paraffin embedded Human Small Intestine. Steamed antigen retrieval with citrate buffer pH 6, AP-staining.