



UK Office

Everest Biotech Ltd

Cherwell Innovation Centre
77 Heyford Park
Upper Heyford
Oxfordshire
OX25 5HD
UK

Enquiries:

info@everestbiotech.com

Sales:

sales@everestbiotech.com

Tech support:

support@everestbiotech.com

Tel: +44 (0)1869 238326

Fax: +44 (0)1869 238327

US Office

Everest Biotech c/o Abcore

405 Maple Street, Suite A106
Ramona,
CA 92065
USA

Inquiries:

info@everestbiotech.com

Sales:

usasales@everestbiotech.com

Tech support:

support@everestbiotech.com

Tel: 888-320-4628 (toll-free)

Fax: 888-841-9041

www.everestbiotech.com

**Research Use Only. Not for
diagnostic or therapeutic use.**

EB10690 - Goat Anti-GNB2L1 Antibody

Size: 100µg specific antibody in 200µl



Target Protein

Principal Names: GNB2L1, guanine nucleotide binding protein (G protein), beta polypeptide 2-like 1, Gnb2-rs1, H12.3, HLC-7, PIG21, RACK1, OTTHUMP00000223930, Receptor for Activated C Kinase 1, cell proliferation-inducing gene 21 protein, guanine nucleotide-binding protein subunit beta-2-like 1, guanine nucleotide-binding protein subunit beta-like protein 12.3, human lung cancer oncogene 7 protein, lung cancer oncogene 7, proliferation-inducing gene 21, protein homologous to chicken B complex protein, guanine nucleotide binding, receptor of activated protein kinase C 1

Official Symbol: RACK1

Accession Number(s): NP_006089.1

Human GeneID(s): [10399](#)

Non-Human GeneID(s): 14694 (mouse), 83427 (rat)

Immunogen

Peptide with sequence NTLGVCKYTVQDESH, from the internal region of the protein sequence according to NP_006089.1.

Please note the [peptide](#) is available for sale.

Purification and Storage

Purified from goat serum by ammonium sulphate precipitation followed by antigen affinity chromatography using the immunizing peptide.

Supplied at 0.5 mg/ml in Tris saline, 0.02% sodium azide, pH7.3 with 0.5% bovine serum albumin.

Aliquot and store at -20°C. Minimize freezing and thawing.

Applications Tested

Peptide ELISA: antibody detection limit dilution 1:128000.

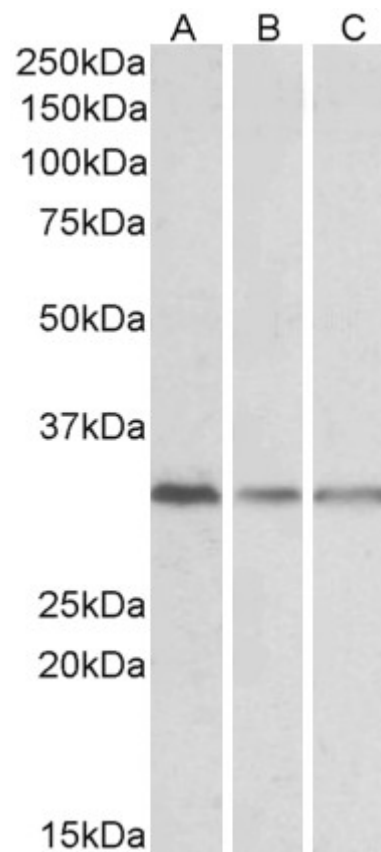
Western blot: Approx 33kDa band observed in Human Lymph Nodes, in Mouse and Rat Spleen lysates and in lysates of many cell lines (calculated MW of 35.1kDa according to NP_006089.1). Recommended concentration: 0.1-0.3µg/ml. Primary incubation was 1 hour.

IHC: Paraffin embedded Human Small Intestine. Recommended concentration: 3.75µg/ml.

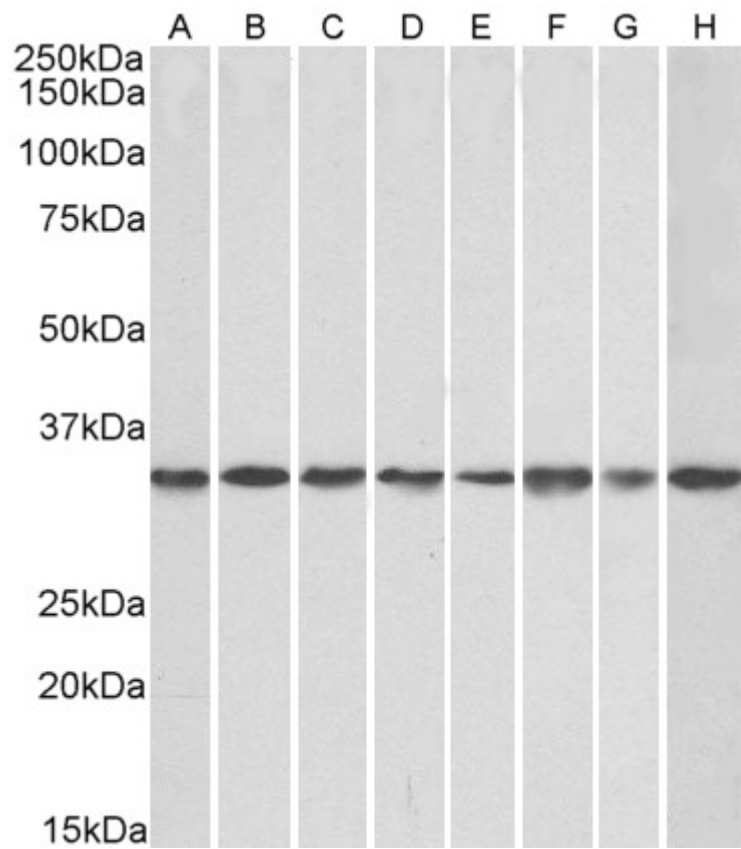
Species Reactivity

Tested: Human, Mouse, Rat

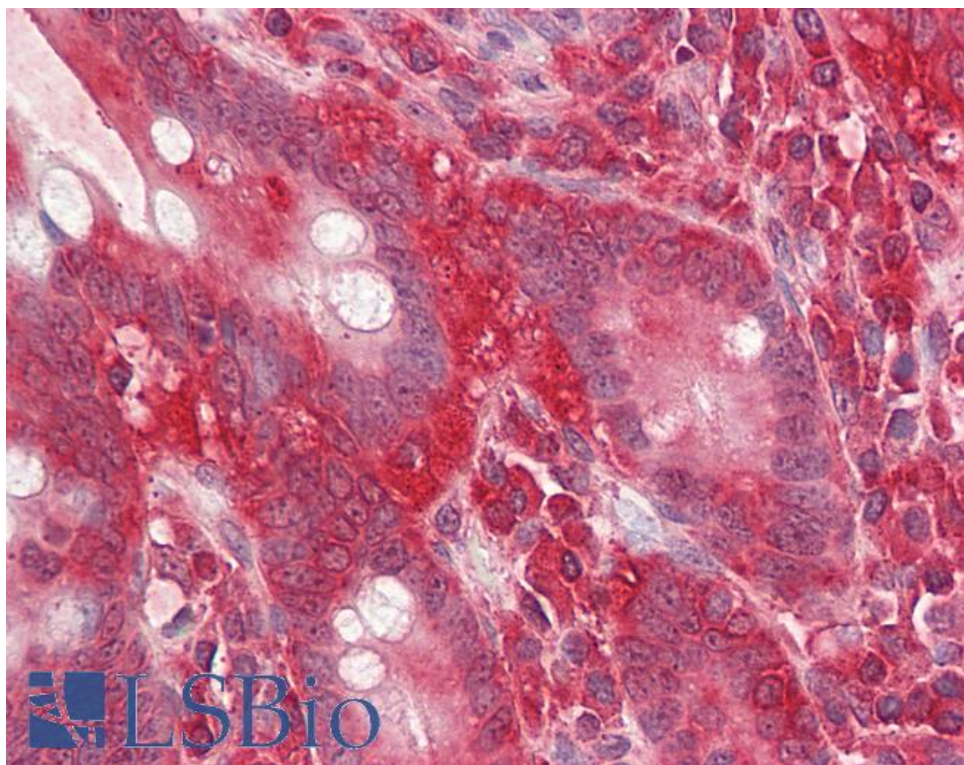
Expected from sequence similarity: Human, Mouse, Rat, Dog, Cow



EB10690 (0.1µg/ml) staining of Human Lymph Node (A), Mouse Spleen (B) and Rat Spleen (C) lysates (35µg protein in RIPA buffer). Detected by chemiluminescence.



EB10690 (0.1µg/ml) staining of NIH3T3 (A), HeK293 (B), HeLa (C), A431 (D), A549 (E), MCF7 (F), Jurkat (G), K562 (H) lysates (35µg protein in RIPA buffer). Detected by chemiluminescence.



EB10690 (3.75µg/ml) staining of paraffin embedded Human Small Intestine. Steamed antigen retrieval with citrate buffer pH 6, AP-staining.