



UK Office

Everest Biotech Ltd

Cherwell Innovation Centre
77 Heyford Park
Upper Heyford
Oxfordshire
OX25 5HD
UK

Enquiries:

info@everestbiotech.com

Sales:

sales@everestbiotech.com

Tech support:

support@everestbiotech.com

Tel: +44 (0)1869 238326

Fax: +44 (0)1869 238327

US Office

Everest Biotech c/o Abcore

405 Maple Street, Suite A106
Ramona,
CA 92065
USA

Inquiries:

info@everestbiotech.com

Sales:

usasales@everestbiotech.com

Tech support:

support@everestbiotech.com

Tel: 888-320-4628 (toll-free)

Fax: 888-841-9041

www.everestbiotech.com

**Research Use Only. Not for
diagnostic or therapeutic use.**

EB12563 - Goat Anti-GNL3 (aa115-126) Antibody

Size: 100µg specific antibody in 200µl



Target Protein

Principal Names: GNL3, guanine nucleotide binding protein-like 3 (nucleolar), C77032, E2IG3, NNP47, NS, E2-induced gene 3 protein, estradiol-induced nucleotide binding protein, guanine nucleotide-binding protein-like 3, novel nucleolar protein 47, nucleolar GTP-binding protein 3, nucleostemin

Official Symbol: GNL3

Accession Number(s): NP_055181.3; NP_996561.1

Human GeneID(s): [26354](#)

Important Comments: This antibody is expected to recognize both reported isoforms (NP_055181.3; NP_996561.1). Reported variants represent identical protein: NP_996561.1, NP_996562.1.

Immunogen

Peptide with sequence C-TENKAKSGKQNS, from the internal region of the protein sequence according to NP_055181.3; NP_996561.1.

Please note the [peptide](#) is available for sale.

Purification and Storage

Purified from goat serum by ammonium sulphate precipitation followed by antigen affinity chromatography using the immunizing peptide.

Supplied at 0.5 mg/ml in Tris saline, 0.02% sodium azide, pH7.3 with 0.5% bovine serum albumin.

Aliquot and store at -20°C. Minimize freezing and thawing.

Applications Tested

Peptide ELISA: antibody detection limit dilution 1:128000.

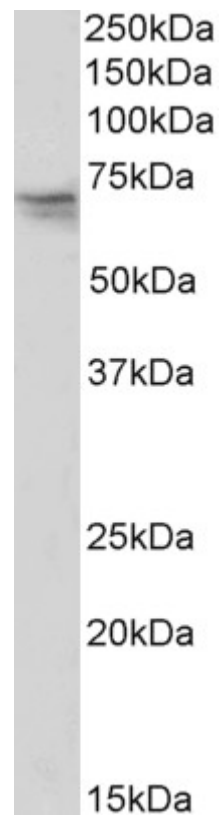
Western blot: Approx 65kDa band observed in nuclear lysates of cell line K562 (calculated MW of 62.0kDa according to NP_055181.3). Recommended concentration: 0.03-0.1µg/ml. Primary incubation was 1 hour.

IHC: Paraffin embedded Human Small Intestine. Recommended concentration: 5µg/ml.

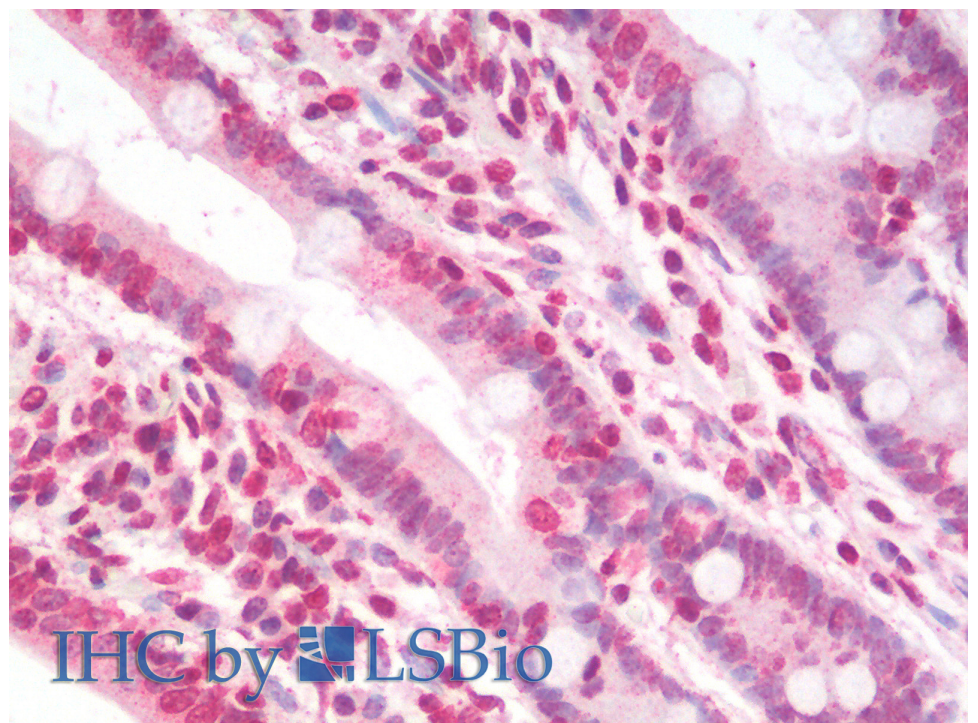
Species Reactivity

Tested: Human

Expected from sequence similarity: Human



EB12563 (0.03 μ g/ml) staining of K562 nuclear lysate (35 μ g protein in RIPA buffer). Detected by chemiluminescence.



EB12563 (5 μ g/ml) staining of paraffin embedded Human Small Intestine. Steamed antigen retrieval with citrate buffer pH 6, AP-staining.