



UK Office

Everest Biotech Ltd

Cherwell Innovation Centre
77 Heyford Park
Upper Heyford
Oxfordshire
OX25 5HD
UK

Enquiries:

info@everestbiotech.com

Sales:

sales@everestbiotech.com

Tech support:

support@everestbiotech.com

Tel: +44 (0)1869 238326

Fax: +44 (0)1869 238327

US Office

Everest Biotech c/o Abcore

405 Maple Street, Suite A106
Ramona,
CA 92065
USA

Inquiries:

info@everestbiotech.com

Sales:

usasales@everestbiotech.com

Tech support:

support@everestbiotech.com

Tel: 888-320-4628 (toll-free)

Fax: 888-841-9041

www.everestbiotech.com

**Research Use Only. Not for
diagnostic or therapeutic use.**

EB08213 - Goat Anti-GOT1 (aa 157-167) Antibody

Size: 100µg specific antibody in 200µl



Target Protein

Principal Names: GOT1, glutamic-oxaloacetic transaminase 1, soluble (aspartate aminotransferase 1), GIG18, aspartate aminotransferase 1, growth-inhibiting protein 18

Official Symbol: GOT1

Accession Number(s): NP_002070.1

Human GeneID(s): [2805](#)

Non-Human GeneID(s): 24401 (rat)

Immunogen

Peptide with sequence C-RSYRYWDAEKR, from the internal region of the protein sequence according to NP_002070.1.

Please note the [peptide](#) is available for sale.

Purification and Storage

Purified from goat serum by ammonium sulphate precipitation followed by antigen affinity chromatography using the immunizing peptide.

Supplied at 0.5 mg/ml in Tris saline, 0.02% sodium azide, pH7.3 with 0.5% bovine serum albumin.

Aliquot and store at -20°C. Minimize freezing and thawing.

Applications Tested

Peptide ELISA: antibody detection limit dilution 1:4000.

Western blot: Approx 40kDa band observed in Human Brain (Cerebellum), Liver and Skeletal Muscle lysates (calculated MW of 46.2kDa according to NP_002070.1). The observed molecular weight corresponds to earlier findings in literature with different antibodies (Berk et al, Proc Natl Acad Sci U S A. 1990 May;87(9):3484-8; PMID: 2185471). Recommended concentration: 0.01-1µg/ml.

IHC: In paraffin embedded Human Heart shows strong staining of the capillary network between the myocardial fibres in transverse section. Recommended concentration: 2-3µg/ml. Paraffin embedded Human Kidney. Recommended concentration: 5µg/ml.

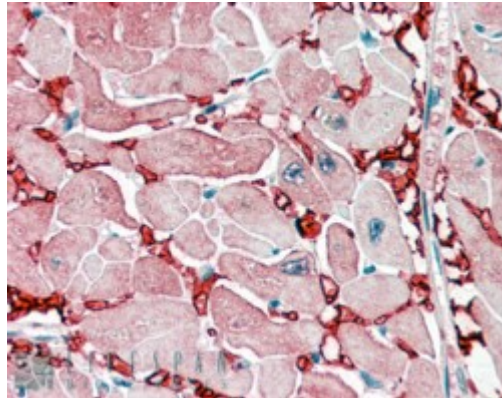
Species Reactivity

Tested: Human

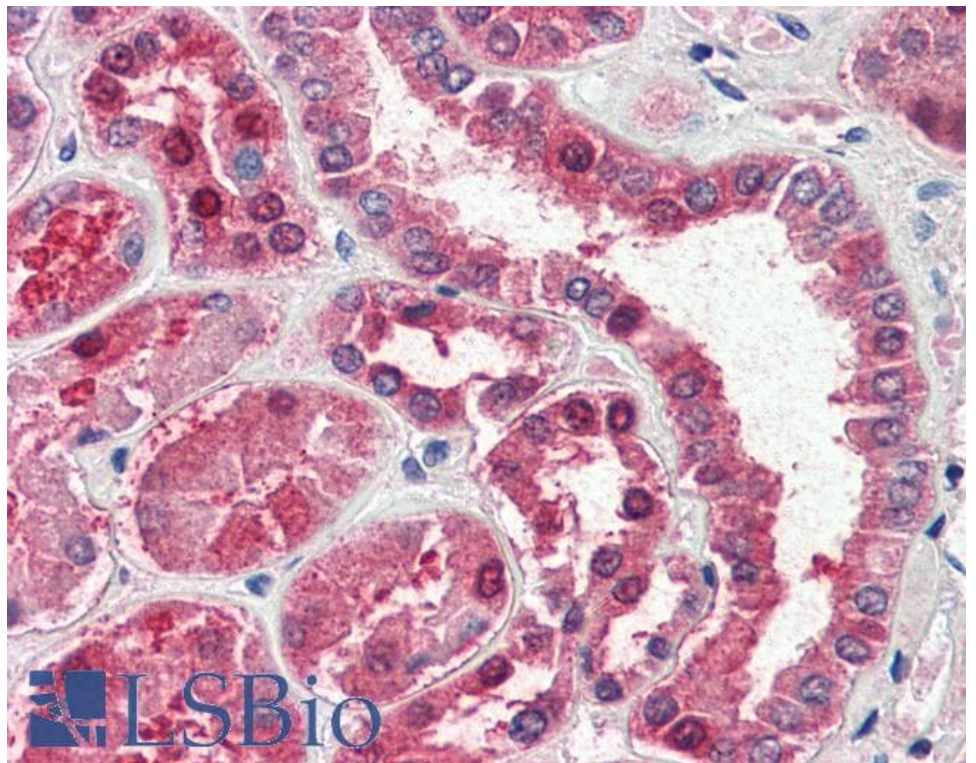
Expected from sequence similarity: Human, Rat



EB08213 (0.01µg/ml) staining of Human Liver lysate (35µg protein in RIPA buffer). Primary incubation was 1 hour. Detected by chemiluminescence.



EB08213 (2.5µg/ml) staining of paraffin embedded Human Heart. Steamed antigen retrieval with citrate buffer pH 6, AP-staining.



EB08213 (5µg/ml) staining of paraffin embedded Human Kidney. Steamed antigen retrieval with citrate buffer pH 6, AP-staining.