



UK Office

Everest Biotech Ltd

Cherwell Innovation Centre
77 Heyford Park
Upper Heyford
Oxfordshire
OX25 5HD
UK

Enquiries:

info@everestbiotech.com

Sales:

sales@everestbiotech.com

Tech support:

support@everestbiotech.com

Tel: +44 (0)1869 238326

www.everestbiotech.com

**Research Use Only. Not for
diagnostic or therapeutic use.**

EB08213-B - Goat Anti-GOT1 (aa 157-167), Biotinylated Antibody

Size: 100µg specific antibody in 200µl



Target Protein

Principal Names: GOT1, glutamic-oxaloacetic transaminase 1, AST1, ASTQTL1, GIG18, cAspAT, cCAT, aspartate aminotransferase 1, aspartate transaminase 1, cysteine aminotransferase, cytoplasmic, cysteine transaminase, cytoplasmic, glutamate oxaloacetate transaminase 1, glutamic-oxaloacetic transaminase 1, soluble, growth-inhibiting protein 18, testis secretory sperm-binding protein Li 196a, transaminase A

Official Symbol: GOT1

Accession Number(s): NP_002070.1

Human GeneID(s): [2805](#)

Non-Human GeneID(s): 24401 (rat)

Immunogen

Peptide with sequence CRSYRYWDAEKR., from the internal region of the protein sequence according to NP_002070.1.

Please note the [peptide](#) is available for sale.

Purification and Storage

Purified from goat serum by ammonium sulphate precipitation followed by antigen affinity chromatography using the immunizing peptide.

Supplied at 0.5 mg/ml in Tris saline, 0.02% sodium azide, pH7.3 with 0.5% bovine serum albumin.

Aliquot and store at -20°C. Minimize freezing and thawing.

Applications Tested

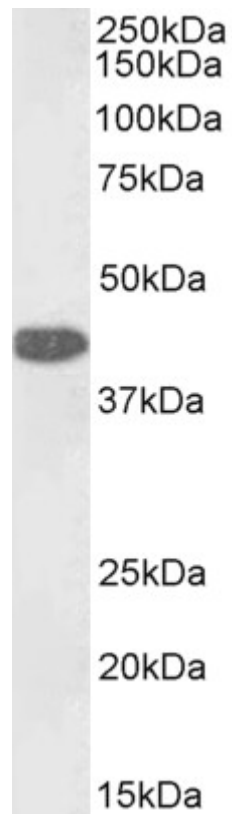
Peptide ELISA: antibody detection limit dilution 1:4000.

Western blot: Approx 40kDa band observed in Human Liver lysates (calculated MW of 46.2kDa according to NP_002070.1). See non-biotinylated parental product's datasheet for further QC data. Recommended concentration: 0.1-0.3µg/ml.

Species Reactivity

Tested: Human

Expected from sequence similarity: Human, Rat



Biotinylated EB08213 (0.1 μ g/ml) staining of Human Liver lysate (35 μ g protein in RIPA buffer), exactly mirroring its parental non-biotinylated product. Primary incubation was 1 hour. Detected by chemiluminescence, using streptavidin-HRP and using NAP blocker as a substitute for skimmed milk.