



UK Office

Everest Biotech Ltd

Cherwell Innovation Centre
77 Heyford Park
Upper Heyford
Oxfordshire
OX25 5HD
UK

Enquiries:

info@everestbiotech.com

Sales:

sales@everestbiotech.com

Tech support:

support@everestbiotech.com

Tel: +44 (0)1869 238326

www.everestbiotech.com

**Research Use Only. Not for
diagnostic or therapeutic use.**

EB08187 - Goat Anti-GOT2 (aa 360 to 373) Antibody

Size: 100µg specific antibody in 200µl



Target Protein

Principal Names: GOT2, glutamic-oxaloacetic transaminase 2, mitochondrial (aspartate aminotransferase 2), FLJ40994, aspartate aminotransferase 2, KAT4, KATIV, mitAAT, kynurenine aminotransferase IV

Official Symbol: GOT2

Accession Number(s): NP_002071.2

Human GeneID(s): [2806](#)

Non-Human GeneID(s): 14719 (mouse), 25721 (rat)

Immunogen

Peptide with sequence C-SNLKKEGSTHNWQH, from the internal region of the protein sequence according to NP_002071.2.

Please note the [peptide](#) is available for sale.

Purification and Storage

Purified from goat serum by ammonium sulphate precipitation followed by antigen affinity chromatography using the immunizing peptide.

Supplied at 0.5 mg/ml in Tris saline, 0.02% sodium azide, pH7.3 with 0.5% bovine serum albumin.

Aliquot and store at -20°C. Minimize freezing and thawing.

Applications Tested

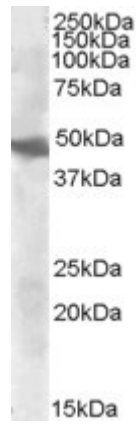
Peptide ELISA: antibody detection limit dilution 1:4000.

Western blot: Approx 48kDa band observed in Human Liver lysates (calculated MW of 47.5kDa according to NP_002071.2). Recommended concentration: 0.3-1µg/ml.

Species Reactivity

Tested: Human

Expected from sequence similarity: Human, Mouse, Rat



EB08187 (0.3 μ g/ml) staining of Human Liver cell lysate (35 μ g protein in RIPA buffer). Primary incubation was 1 hour. Detected by chemiluminescence.