



UK Office

Everest Biotech Ltd

Cherwell Innovation Centre
77 Heyford Park
Upper Heyford
Oxfordshire
OX25 5HD
UK

Enquiries:

info@everestbiotech.com

Sales:

sales@everestbiotech.com

Tech support:

support@everestbiotech.com

Tel: +44 (0)1869 238326

Fax: +44 (0)1869 238327

US Office

Everest Biotech c/o Abcore

405 Maple Street, Suite A106
Ramona,
CA 92065
USA

Inquiries:

info@everestbiotech.com

Sales:

usasales@everestbiotech.com

Tech support:

support@everestbiotech.com

Tel: 888-320-4628 (toll-free)

Fax: 888-841-9041

www.everestbiotech.com

**Research Use Only. Not for
diagnostic or therapeutic use.**

EB10558 - Goat Anti-GPM6A Antibody

Size: 100µg specific antibody in 200µl



Target Protein

Principal Names: GPM6A, glycoprotein M6A, GPM6, M6A, neuronal membrane glycoprotein M6-a

Official Symbol: GPM6A

Accession Number(s): NP_005268.1; NP_963885.1; NP_963886.1

Human GeneID(s): [2823](#)

Non-Human GeneID(s): 234267 (mouse), 306439 (rat)

Important Comments: This antibody is expected to recognize all reported isoforms (NP_005268.1; NP_963885.1; NP_963886.1). Reported variants represent identical protein: NP_963885.1, NP_005268.1.

Immunogen

Peptide with sequence C-QTYFEMARTAGD, from the internal region of the protein sequence according to NP_005268.1; NP_963885.1; NP_963886.1.

Please note the [peptide](#) is available for sale.

Purification and Storage

Purified from goat serum by ammonium sulphate precipitation followed by antigen affinity chromatography using the immunizing peptide.

Supplied at 0.5 mg/ml in Tris saline, 0.02% sodium azide, pH7.3 with 0.5% bovine serum albumin.

Aliquot and store at -20°C. Minimize freezing and thawing.

Applications Tested

Peptide ELISA: antibody detection limit dilution 1:32000.

Western blot: Approx 33kDa band observed in Human Brain (Cerebellum) and Rat Brain lysates. An approx. 75kDa band was also observed in Human Cerebellum, Olfactory Bulb and in fetal Mouse and Rat Brain lysates (calculated MW of 31.2kDa according to Human NP_005268.1 and Rat NP_835206.1, and 31.1kDa according to Mouse NP_705809.1).

The observed 75kDa band corresponds to the glycosylated form. Recommended concentration: 0.5-2µg/ml. Primary incubation was 1 hour.

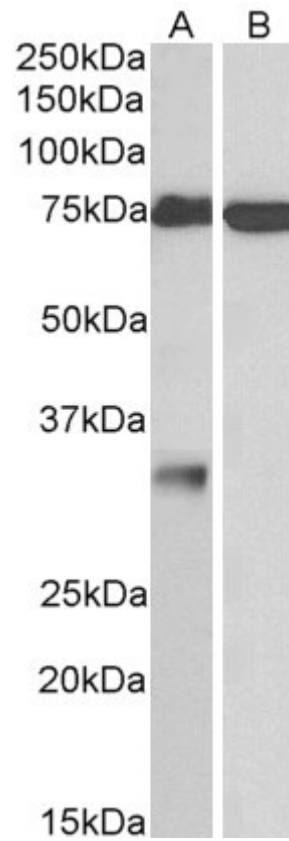
IHC: Paraffin embedded Human Brain (Cerebellum). Recommended concentration: 3.75µg/ml.

This product has been demonstrated not suitable in IF.

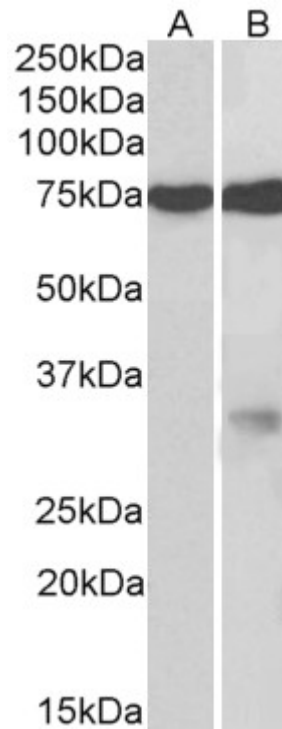
Species Reactivity

Tested: Human, Mouse, Rat

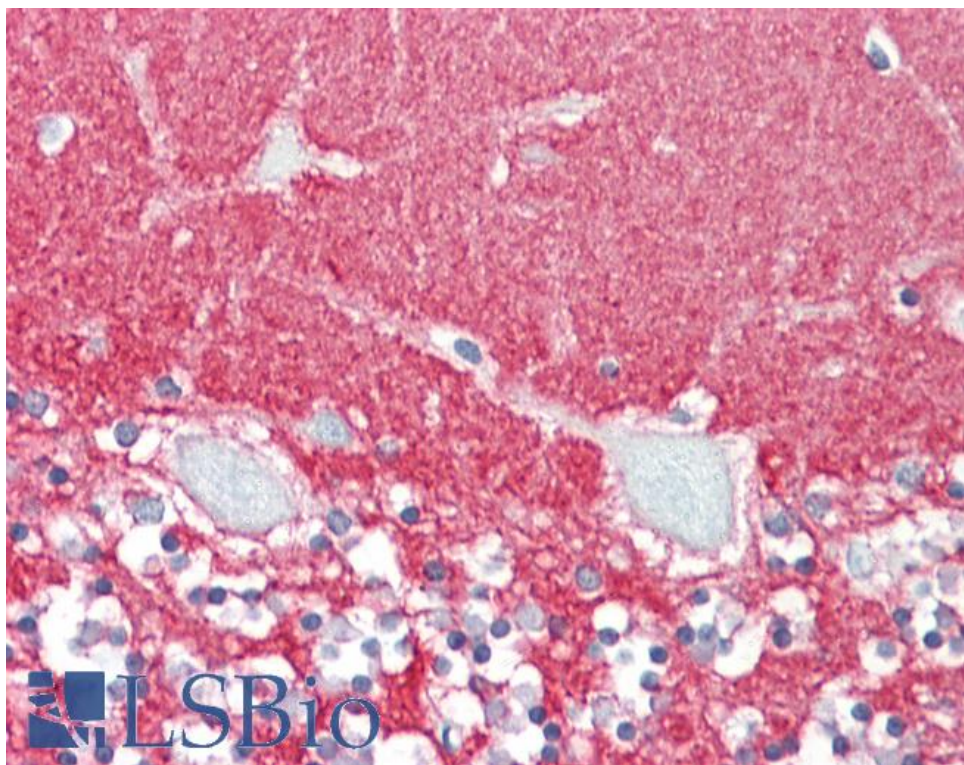
Expected from sequence similarity: Human, Mouse, Rat, Dog



EB10558 (1 μ g/ml) staining of Human Cerebellum (A) and Olfactory Bulb (B) lysates (35 μ g protein in RIPA buffer). Detected by chemiluminescence.



EB10558 (2 μ g/ml) staining of fetal Mouse (A) and Rat (B) Brain lysates (35 μ g protein in RIPA buffer). Detected by chemiluminescence.



EB10558 (3.75µg/ml) staining of paraffin embedded Human Cerebellum. Steamed antigen retrieval with citrate buffer pH 6, AP-staining.