

UK Office

Everest Biotech Ltd

Cherwell Innovation Centre
77 Heyford Park
Upper Heyford
Oxfordshire
OX25 5HD
UK

Enquiries:

info@everestbiotech.com

Sales:

sales@everestbiotech.com

Tech support:

support@everestbiotech.com

Tel: +44 (0)1869 238326

www.everestbiotech.com

**Research Use Only. Not for
diagnostic or therapeutic use.**

EB11272 - Goat Anti-GPR83 (aa17-30) Antibody

Size: 100µg specific antibody in 200µl



Target Protein

Principal Names: G protein-coupled receptor 72, G protein-coupled receptor 83, GIR, glucocorticoid induced receptor, GPR72, G-protein coupled receptor 72, probable G-protein coupled receptor 83, GPR83

Official Symbol: GPR83

Accession Number(s): NP_057624.3

Human GeneID(s): [10888](#)

Important Comments: The immunizing peptide represents part of an extracellular domain.

Immunogen

Peptide with sequence TEPHEGRADEQSAE-C, from the N Terminus of the protein sequence according to NP_057624.3.

Please note the [peptide](#) is available for sale.

Purification and Storage

Purified from goat serum by ammonium sulphate precipitation followed by antigen affinity chromatography using the immunizing peptide.

Supplied at 0.5 mg/ml in Tris saline, 0.02% sodium azide, pH7.3 with 0.5% bovine serum albumin.

Aliquot and store at -20°C. Minimize freezing and thawing.

Applications Tested

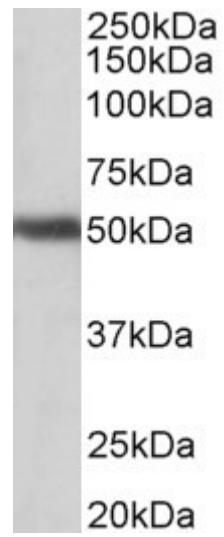
Peptide ELISA: antibody detection limit dilution 1:2000.

Western blot: Approx 50kDa band observed in Human Brain (Cerebellum, Cerebral Cortex and Amygdala) lysates (calculated MW of 48.3kDa according to NP_057624.3). Recommended concentration: 1-3µg/ml.

Species Reactivity

Tested: Human

Expected from sequence similarity: Human



EB11272 (1 μ g/ml) staining of Human Cerebellum lysate (35 μ g protein in RIPA buffer). Primary incubation was 1 hour. Detected by chemiluminescence.