

## UK Office

### Everest Biotech Ltd

Cherwell Innovation Centre  
77 Heyford Park  
Upper Heyford  
Oxfordshire  
OX25 5HD  
UK

Enquiries:

[info@everestbiotech.com](mailto:info@everestbiotech.com)

Sales:

[sales@everestbiotech.com](mailto:sales@everestbiotech.com)

Tech support:

[support@everestbiotech.com](mailto:support@everestbiotech.com)

Tel: +44 (0)1869 238326

[www.everestbiotech.com](http://www.everestbiotech.com)

**Research Use Only. Not for  
diagnostic or therapeutic use.**

## EB11273 - Goat Anti-GPR83 (aa59-71) Antibody

Size: 100µg specific antibody in 200µl



### Target Protein

**Principal Names:** G protein-coupled receptor 72, G protein-coupled receptor 83, GIR, glucocorticoid induced receptor, GPR72, G-protein coupled receptor 72, probable G-protein coupled receptor 83, GPR83

**Official Symbol:** GPR83

**Accession Number(s):** NP\_057624.3

**Human GeneID(s):** [10888](#)

**Non-Human GeneID(s):** 14608 (mouse), 140595 (rat)

**Important Comments:** The immunizing peptide represents part of an extracellular domain.

### Immunogen

Peptide with sequence C-RRYGAESQNPTVK, from the internal region of the protein sequence according to NP\_057624.3.

Please note the [peptide](#) is available for sale.

### Purification and Storage

Purified from goat serum by ammonium sulphate precipitation followed by antigen affinity chromatography using the immunizing peptide.

Supplied at 0.5 mg/ml in Tris saline, 0.02% sodium azide, pH7.3 with 0.5% bovine serum albumin.

Aliquot and store at -20°C. Minimize freezing and thawing.

### Applications Tested

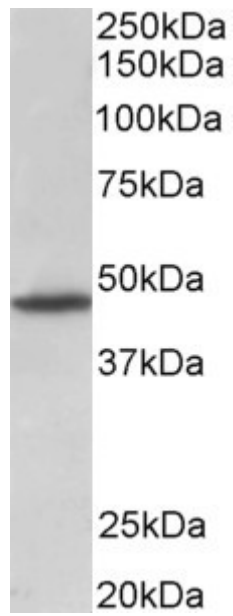
**Peptide ELISA:** antibody detection limit dilution 1:8000.

**Western blot:** Approx 48kDa band observed in Human, Mouse and Rat Brain lysates (calculated MW of 48.3kDa according to Human NP\_057624.3 and 48.0kDa according to Rat NP\_536336.1). Recommended concentration: 1-3µg/ml.

### Species Reactivity

**Tested:** Human, Mouse, Rat

**Expected from sequence similarity:** Human, Mouse, Rat, Dog, Pig, Cow



EB11273 (1 $\mu$ g/ml) staining of Rat Brain lysate (35 $\mu$ g protein in RIPA buffer). Primary incubation was 1 hour.  
Detected by chemiluminescence.