



UK Office

Everest Biotech Ltd

Cherwell Innovation Centre
77 Heyford Park
Upper Heyford
Oxfordshire
OX25 5HD
UK

Enquiries:

info@everestbiotech.com

Sales:

sales@everestbiotech.com

Tech support:

support@everestbiotech.com

Tel: +44 (0)1869 238326

Fax: +44 (0)1869 238327

US Office

Everest Biotech c/o Abcore

405 Maple Street, Suite A106
Ramona,
CA 92065
USA

Inquiries:

info@everestbiotech.com

Sales:

usasales@everestbiotech.com

Tech support:

support@everestbiotech.com

Tel: 888-320-4628 (toll-free)

Fax: 888-841-9041

www.everestbiotech.com

**Research Use Only. Not for
diagnostic or therapeutic use.**

EB05952 - Goat Anti-GPS1 / COPS1 Antibody

Size: 100µg specific antibody in 200µl



Target Protein

Principal Names: GPS1, COPS1, G protein pathway suppressor 1, Arabidopsis FUS6/COP11 homolog, CSN1, MGC71287

Official Symbol: GPS1

Accession Number(s): NP_997657.1; NP_004118.3

Human GeneID(s): [2873](#)

Non-Human GeneID(s): 209318 (mouse), 117039 (rat)

Important Comments: This antibody is expected to recognise isoform 1 (NP_997657.1) and isoform 2 (NP_004118.3).

Immunogen

Peptide with sequence C-PANSQSRMSTNM, from the C Terminus of the protein sequence according to NP_997657.1; NP_004118.3.

Please note the [peptide](#) is available for sale.

Purification and Storage

Purified from goat serum by ammonium sulphate precipitation followed by antigen affinity chromatography using the immunizing peptide.

Supplied at 0.5 mg/ml in Tris saline, 0.02% sodium azide, pH7.3 with 0.5% bovine serum albumin.

Aliquot and store at -20°C. Minimize freezing and thawing.

Applications Tested

Peptide ELISA: antibody detection limit dilution 1:32000.

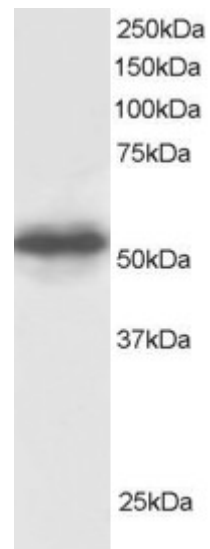
Western blot: Approx 55kDa band observed in Human Testis lysate (predicted MW of 58kDa according to NP_004118). Recommended for use at 0.5µg/ml. Primary incubation was for 1 hour.

IHC: Paraffin embedded Human Prostate, Testis and Tonsil. Recommended concentration: 5µg/ml.

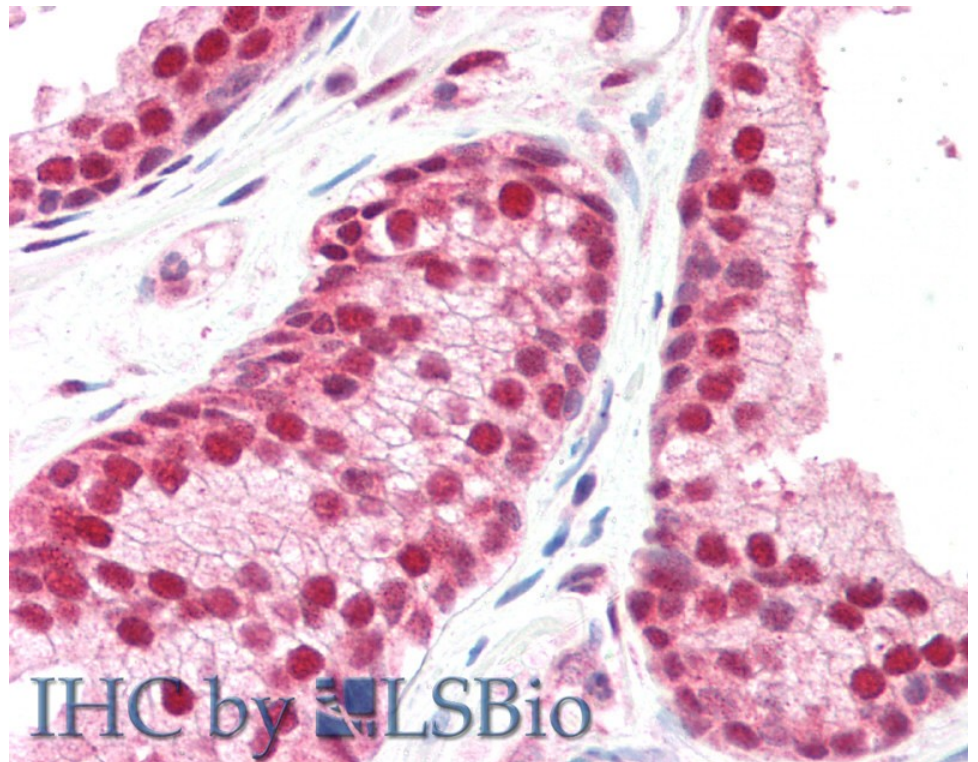
Species Reactivity

Tested: Human

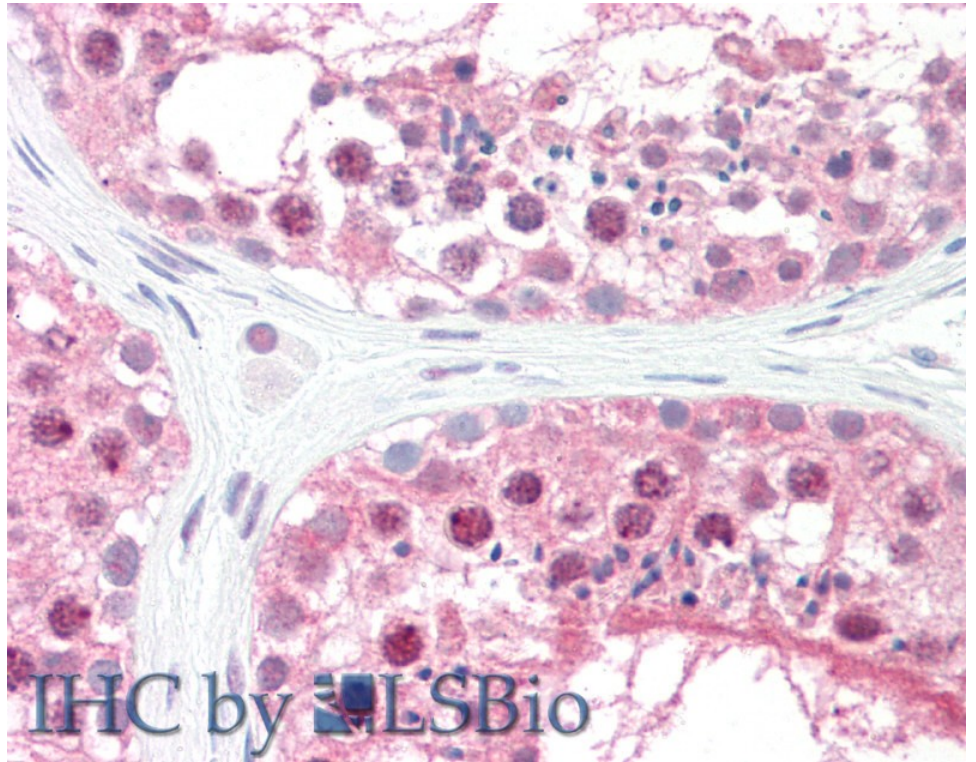
Expected from sequence similarity: Human, Mouse, Rat, Dog, Cow



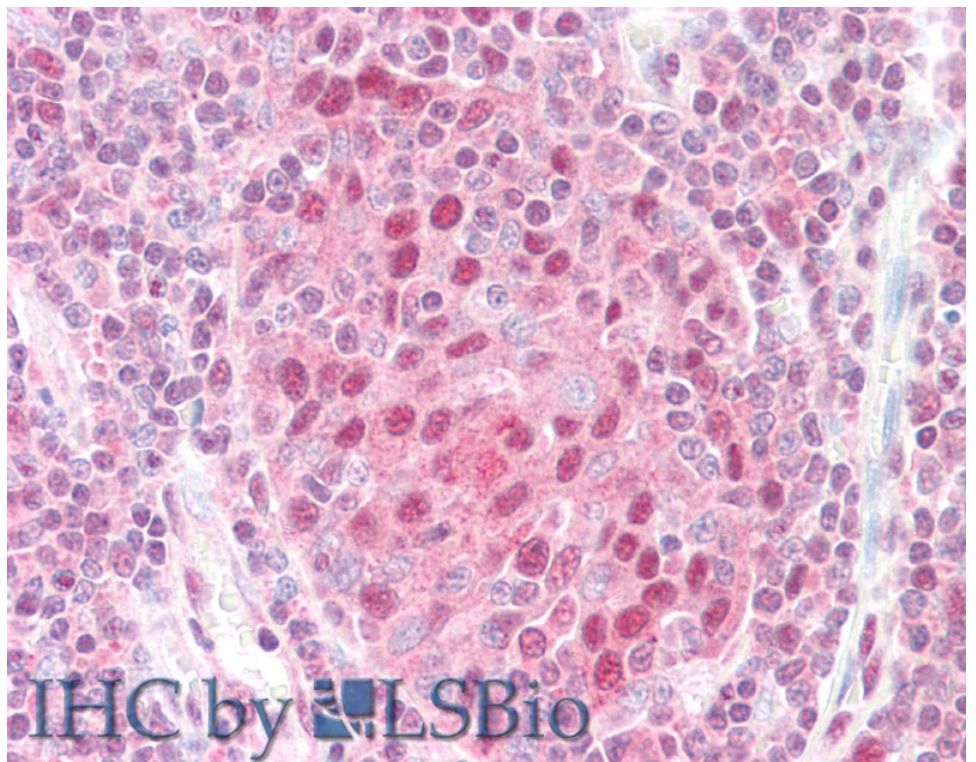
EB05952 staining (0.5µg/ml) of Human Testis lysate (RIPA buffer, 30µg total protein per lane). Detected by chemiluminescence.



EB05952 (5µg/ml) staining of paraffin embedded Human Prostate. Steamed antigen retrieval with citrate buffer pH 6, AP-staining.



EB05952 (5µg/ml) staining of paraffin embedded Human Testis. Steamed antigen retrieval with citrate buffer pH 6, AP-staining.



EB05952 (5µg/ml) staining of paraffin embedded Human Tonsil. Steamed antigen retrieval with citrate buffer pH 6, AP-staining.