



UK Office

Everest Biotech Ltd

Cherwell Innovation Centre
77 Heyford Park
Upper Heyford
Oxfordshire
OX25 5HD
UK

Enquiries:

info@everestbiotech.com

Sales:

sales@everestbiotech.com

Tech support:

support@everestbiotech.com

Tel: +44 (0)1869 238326

www.everestbiotech.com

**Research Use Only. Not for
diagnostic or therapeutic use.**

EB11666 - Goat Anti-Gpx1 (mouse aa53-67) Antibody

Size: 100µg specific antibody in 200µl



Target Protein

Principal Names: A1195024, AL033363, cellular glutathione peroxidase, CGPx, glutathione peroxidase 1, Gpx, Gpx1, GPx-1, GSHPx-1

Official Symbol: Gpx1

Accession Number(s): NP_032186.2

Non-Human GeneID(s): 14775 (mouse), 24404 (rat)

Immunogen

Peptide with sequence C-DYTEMNDLQKRLGPR, from the internal region of the protein sequence according to NP_032186.2.

Please note the [peptide](#) is available for sale.

Purification and Storage

Purified from goat serum by ammonium sulphate precipitation followed by antigen affinity chromatography using the immunizing peptide.

Supplied at 0.5 mg/ml in Tris saline, 0.02% sodium azide, pH7.3 with 0.5% bovine serum albumin.

Aliquot and store at -20°C. Minimize freezing and thawing.

Applications Tested

Peptide ELISA: antibody detection limit dilution 1:128000.

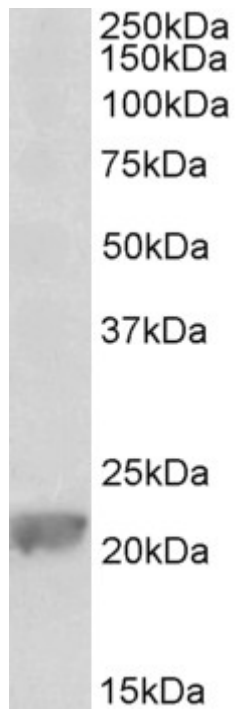
Western blot: Approx 22kDa band observed in Rat Kidney and Liver lysates and in Mouse Kidney lysates (calculated MW of 22.3kDa according to NP_032186.2).

Recommended concentration: 0.1-0.3µg/ml.

Species Reactivity

Tested: Mouse, Rat

Expected from sequence similarity: Mouse, Rat, Cow



EB11666 (0.1g/ml) staining of Rat Liver lysate (35 μ g protein in RIPA buffer). Primary incubation was 1 hour.
Detected by chemiluminescence.