



UK Office

Everest Biotech Ltd

Cherwell Innovation Centre
77 Heyford Park
Upper Heyford
Oxfordshire
OX25 5HD
UK

Enquiries:

info@everestbiotech.com

Sales:

sales@everestbiotech.com

Tech support:

support@everestbiotech.com

Tel: +44 (0)1869 238326

www.everestbiotech.com

**Research Use Only. Not for
diagnostic or therapeutic use.**

EB07319 - Goat Anti-GPX7 Antibody

Size: 100µg specific antibody in 200µl



Target Protein

Principal Names: GPX7, glutathione peroxidase 7 [Homo sapiens], HGNC:4559, CL683, FLJ14777, GPX6, NPGPx, non-selenocysteine containing phospholipid hydroperoxide glutathione peroxidase

Official Symbol: GPX7

Accession Number(s): NP_056511.2

Human GeneID(s): [2882](#)

Non-Human GeneID(s): 67305 (mouse), 298376 (rat)

Immunogen

Peptide with sequence CNQFGQQEPDSNK, from the internal region of the protein sequence according to NP_056511.2.

Please note the [peptide](#) is available for sale.

Purification and Storage

Purified from goat serum by ammonium sulphate precipitation followed by antigen affinity chromatography using the immunizing peptide.

Supplied at 0.5 mg/ml in Tris saline, 0.02% sodium azide, pH7.3 with 0.5% bovine serum albumin.

Aliquot and store at -20°C. Minimize freezing and thawing.

Applications Tested

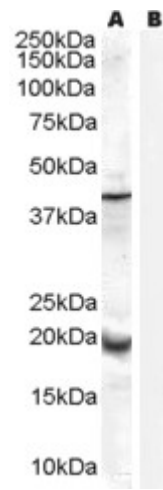
Peptide ELISA: antibody detection limit dilution 1:32000.

Western blot: Approx 20kDa band observed in Human Prostate lysates (calculated MW of 21.0kDa according to NP_056511.2). Recommended concentration: 0.3-1µg/ml. An additional band of unknown identity was also consistently observed at 40kDa. This band was successfully blocked by incubation with the immunising peptide.

Species Reactivity

Tested: Human

Expected from sequence similarity: Human



EB07319 (0.3 μ g/ml) staining of Human Prostate lysate (35 μ g protein in RIPA buffer) with (B) and without (A) blocking with the immunising peptide. Primary incubation was 1 hour. Detected by chemiluminescence.