



## UK Office

### Everest Biotech Ltd

Cherwell Innovation Centre  
77 Heyford Park  
Upper Heyford  
Oxfordshire  
OX25 5HD  
UK

Enquiries:

[info@everestbiotech.com](mailto:info@everestbiotech.com)

Sales:

[sales@everestbiotech.com](mailto:sales@everestbiotech.com)

Tech support:

[support@everestbiotech.com](mailto:support@everestbiotech.com)

Tel: +44 (0)1869 238326

Fax: +44 (0)1869 238327

## US Office

### Everest Biotech c/o Abcore

405 Maple Street, Suite A106  
Ramona,  
CA 92065  
USA

Inquiries:

[info@everestbiotech.com](mailto:info@everestbiotech.com)

Sales:

[usasales@everestbiotech.com](mailto:usasales@everestbiotech.com)

Tech support:

[support@everestbiotech.com](mailto:support@everestbiotech.com)

Tel: 888-320-4628 (toll-free)

Fax: 888-841-9041

[www.everestbiotech.com](http://www.everestbiotech.com)

**Research Use Only. Not for  
diagnostic or therapeutic use.**

## EB06142 - Goat Anti-GRAF / ARHGAP26 Antibody

Size: 100µg specific antibody in 200µl



### Target Protein

**Principal Names:** ARHGAP26, GRAF, Rho GTPase activating protein 26, KIAA0621, FLJ42530, OPHN1L, OPHN1L1, GTPase regulator associated with FAK, GTPase regulator associated with focal adhesion kinase pp125(FAK), GTPase regulator associated with the focal adhesion kinase pp125

**Official Symbol:** ARHGAP26

**Accession Number(s):** NP\_055886.1; NP\_001129080.1

**Human GeneID(s):** [23092](#)

**Non-Human GeneID(s):** 71302 (mouse)

**Important Comments:** This antibody is expected to recognise both reported isoforms.

### Immunogen

Peptide with sequence C-KTGLIPENYVEFL, from the C Terminus of the protein sequence according to NP\_055886.1; NP\_001129080.1.

Please note the [peptide](#) is available for sale.

### Purification and Storage

Purified from goat serum by ammonium sulphate precipitation followed by antigen affinity chromatography using the immunizing peptide.

Supplied at 0.5 mg/ml in Tris saline, 0.02% sodium azide, pH7.3 with 0.5% bovine serum albumin.

Aliquot and store at -20°C. Minimize freezing and thawing.

### Applications Tested

**Peptide ELISA:** antibody detection limit dilution 1:64000.

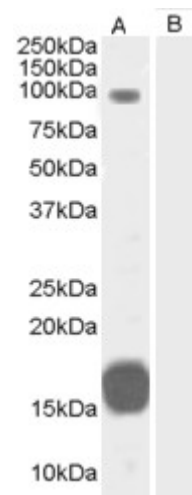
**Western blot:** Approx 90kDa band observed in Human Heart lysates (calculated MW of 92.2kDa according to NP\_055886.1). Recommended concentration: 0.3-1µg/ml. An additional strong band of unknown identity was also consistently observed at 16kDa. This band was successfully blocked by incubation with the immunising peptide.

**IHC:** Paraffin embedded Human Colon. Recommended concentration: 3.75µg/ml.

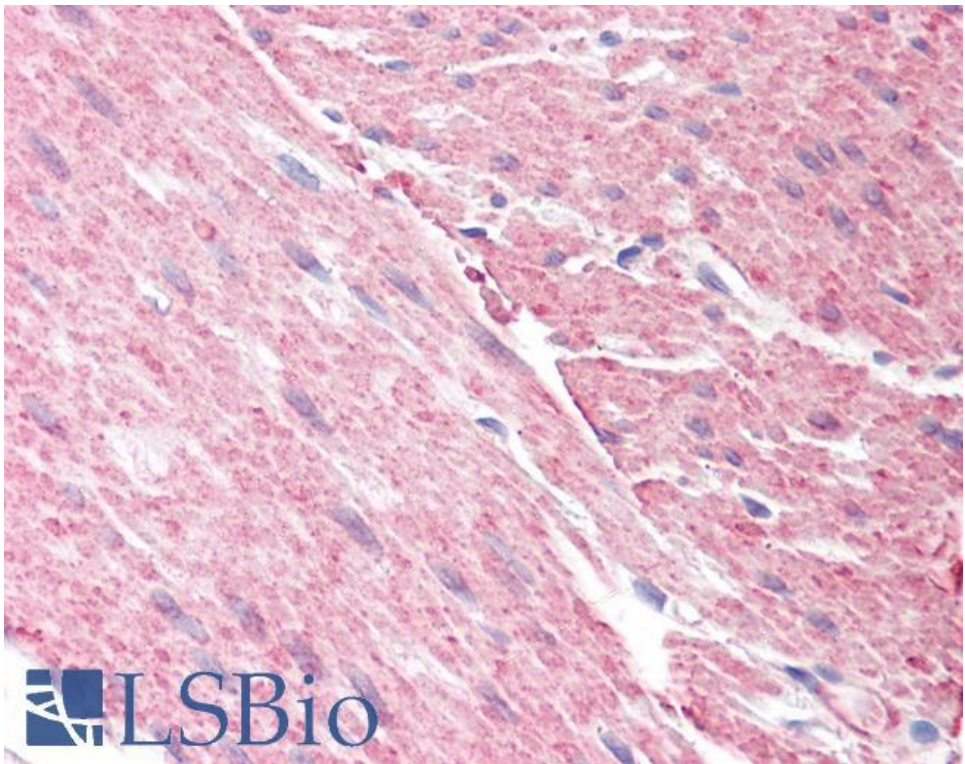
### Species Reactivity

**Tested:** Human

**Expected from sequence similarity:** Human, Mouse, Rat, Dog, Cow



EB06142 (0.3µg/ml) staining of Human Heart lysate (35µg protein in RIPA buffer) with (B) and without (A) blocking with the immunising peptide. Primary incubation was 1 hour. Detected by chemiluminescence.



EB06142 (3.75µg/ml) staining of paraffin embedded Human Colon. Steamed antigen retrieval with citrate buffer pH 6, AP-staining.