



UK Office

Everest Biotech Ltd

Cherwell Innovation Centre
77 Heyford Park
Upper Heyford
Oxfordshire
OX25 5HD
UK

Enquiries:

info@everestbiotech.com

Sales:

sales@everestbiotech.com

Tech support:

support@everestbiotech.com

Tel: +44 (0)1869 238326

Fax: +44 (0)1869 238327

US Office

Everest Biotech c/o Abcore

405 Maple Street, Suite A106
Ramona,
CA 92065
USA

Inquiries:

info@everestbiotech.com

Sales:

usasales@everestbiotech.com

Tech support:

support@everestbiotech.com

Tel: 888-320-4628 (toll-free)

Fax: 888-841-9041

www.everestbiotech.com

**Research Use Only. Not for
diagnostic or therapeutic use.**

EB08934 - Goat Anti-Granulin / GRN Antibody

Size: 100µg specific antibody in 200µl



Target Protein

Principal Names: GRN, granulin, GEP, GP88, PCDGF, PEPI, PGRN, PC cell-derived growth factor, acrogranin, granulin-epithelin, proepithelin, progranulin

Official Symbol: GRN

Accession Number(s): NP_002078.1

Human GeneID(s): [2896](#)

Immunogen

Peptide with sequence QSKCLSKENATTD, from the internal region of the protein sequence according to NP_002078.1.

Please note the [peptide](#) is available for sale.

Purification and Storage

Purified from goat serum by ammonium sulphate precipitation followed by antigen affinity chromatography using the immunizing peptide.

Supplied at 0.5 mg/ml in Tris saline, 0.02% sodium azide, pH7.3 with 0.5% bovine serum albumin.

Aliquot and store at -20°C. Minimize freezing and thawing.

Applications Tested

Peptide ELISA: antibody detection limit dilution 1:1000.

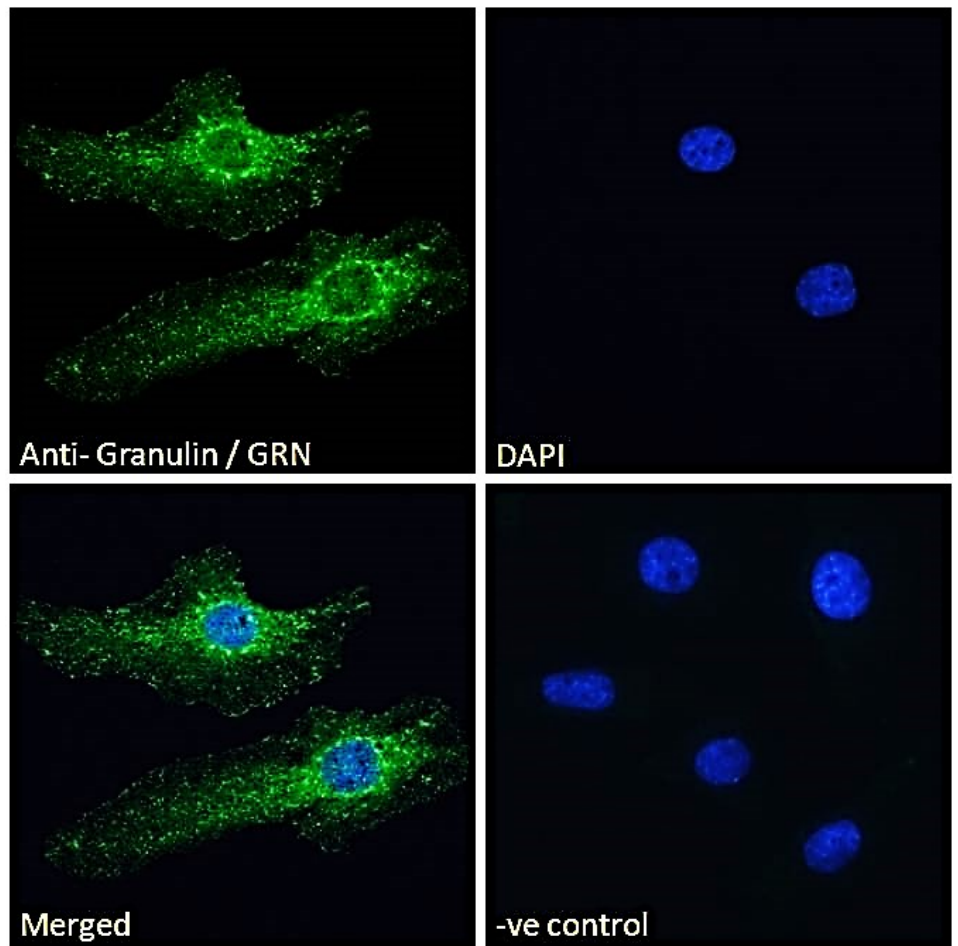
Western blot: Preliminary experiments showed a band at approx 65kDa in Human Bone Marrow and Testes lysates after 2µg/ml antibody staining (calculated MW of 63.5kDa according to NP_002078.1). Primary incubation 1 hour at room temperature.

Immunofluorescence: Strong expression of the protein seen in the vesicles/cytoplasm of HeLa cells. Recommended concentration: 10µg/ml.

Species Reactivity

Tested: Human

Expected from sequence similarity: Human



EB08934 Immunofluorescence analysis of paraformaldehyde fixed HeLa cells, permeabilized with 0.15% Triton. Primary incubation 1hr (10ug/ml) followed by Alexa Fluor 488 secondary antibody (2ug/ml), showing ER/vesicle staining. The nuclear stain is DAPI (blue). Negative control: Unimmunized goat IgG (10ug/ml) followed by Alexa Fluor 488 secondary antibody (2ug/ml).