



## UK Office

### Everest Biotech Ltd

Cherwell Innovation Centre  
77 Heyford Park  
Upper Heyford  
Oxfordshire  
OX25 5HD  
UK

Enquiries:

[info@everestbiotech.com](mailto:info@everestbiotech.com)

Sales:

[sales@everestbiotech.com](mailto:sales@everestbiotech.com)

Tech support:

[support@everestbiotech.com](mailto:support@everestbiotech.com)

Tel: +44 (0)1869 238326

Fax: +44 (0)1869 238327

## US Office

### Everest Biotech c/o Abcore

405 Maple Street, Suite A106  
Ramona,  
CA 92065  
USA

Inquiries:

[info@everestbiotech.com](mailto:info@everestbiotech.com)

Sales:

[usasales@everestbiotech.com](mailto:usasales@everestbiotech.com)

Tech support:

[support@everestbiotech.com](mailto:support@everestbiotech.com)

Tel: 888-320-4628 (toll-free)

Fax: 888-841-9041

[www.everestbiotech.com](http://www.everestbiotech.com)

**Research Use Only. Not for  
diagnostic or therapeutic use.**

## EB05284-B - Goat Anti-GRB2, biotinylated Antibody

Size: 100µg specific antibody in 200µl



### Target Protein

**Principal Names:** GRB2, growth factor receptor-bound protein 2, ASH, EGFRBP-GRB2, Grb3-3, MST084, MSTP084, NCKAP2, HT027, SH2/SH3 adapter GRB2, abundant SRC homology, epidermal growth factor receptor-binding protein GRB2, growth factor receptor-bound protein 3, protein Ash

**Official Symbol:** GRB2

**Accession Number(s):** NP\_002077.1; NP\_987102.1

**Human GeneID(s):** [2885](#)

**Non-Human GeneID(s):** 14784 (mouse), 81504 (rat)

**Important Comments:** This antibody is expected to recognize both reported isoforms (NP\_002077.1 and NP\_987102.1).

### Immunogen

Peptide with sequence C-PRNYVTPVNRNV., from the C Terminus of the protein sequence according to NP\_002077.1; NP\_987102.1.

Please note the [peptide](#) is available for sale.

### Purification and Storage

Purified from goat serum by ammonium sulphate precipitation followed by antigen affinity chromatography using the immunizing peptide.

Supplied at 0.5 mg/ml in Tris saline, 0.02% sodium azide, pH7.3 with 0.5% bovine serum albumin.

Aliquot and store at -20°C. Minimize freezing and thawing.

### Applications Tested

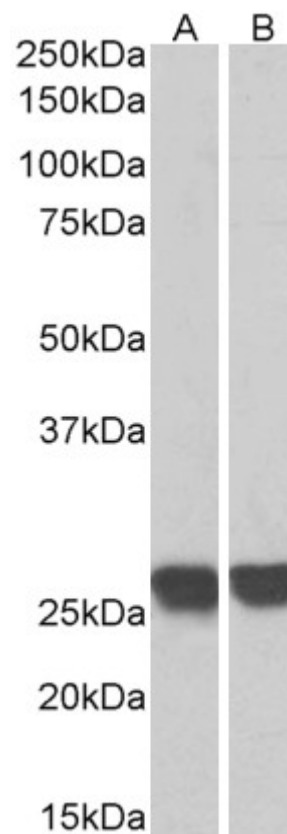
**Peptide ELISA:** antibody detection limit dilution 1:32000.

**Western blot:** Approx 26kDa band observed in lysates of Human Thymus and of cell line MOLT4 (calculated MW of 25.2kDa according to NP\_002077.1). See non-biotinylated parental product's datasheet for further QC data. Recommended concentration: 0.3-1µg/ml.

### Species Reactivity

**Tested:** Human, Mouse, Rat, Pig

**Expected from sequence similarity:** Human, Mouse, Rat, Dog, Cow



Biotinylated EB05284 (0.3 $\mu$ g/ml) staining of MOLT4 (A) and Human Thymus (B) lysates (35 $\mu$ g protein in RIPA buffer), exactly mirroring its parental non-biotinylated product. Primary incubation was 1 hour. Detected by chemiluminescence, using streptavidin-HRP and using NAP blocker as a substitute for skimmed milk.