



UK Office

Everest Biotech Ltd

Cherwell Innovation Centre
77 Heyford Park
Upper Heyford
Oxfordshire
OX25 5HD
UK

Enquiries:

info@everestbiotech.com

Sales:

sales@everestbiotech.com

Tech support:

support@everestbiotech.com

Tel: +44 (0)1869 238326

Fax: +44 (0)1869 238327

US Office

Everest Biotech c/o Abcore

405 Maple Street, Suite A106
Ramona,
CA 92065
USA

Inquiries:

info@everestbiotech.com

Sales:

usasales@everestbiotech.com

Tech support:

support@everestbiotech.com

Tel: 888-320-4628 (toll-free)

Fax: 888-841-9041

www.everestbiotech.com

**Research Use Only. Not for
diagnostic or therapeutic use.**

EB08518 - Goat Anti-GRIA4 Antibody

Size: 100µg specific antibody in 200µl



Target Protein

Principal Names: GRIA4, glutamate receptor, ionotropic, AMPA 4, GLUR4, GLUR4C, GLURD, AMPA-selective glutamate receptor 4

Official Symbol: GRIA4

Accession Number(s): NP_000820.3; NP_001070711.2; NP_001070712.1

Human GeneID(s): [2893](#)

Non-Human GeneID(s): 14802 (mouse), 29629 (rat)

Important Comments: This antibody is expected to recognize all reported isoforms (NP_000820.3; NP_001070711.1; NP_001070712.1). Reported variants NP_001070712.1 and NP_001106283.1 represent identical protein.

Immunogen

Peptide with sequence C-KKLDQREYPGSETP, from the internal region of the protein sequence according to NP_000820.3; NP_001070711.2; NP_001070712.1.

Please note the [peptide](#) is available for sale.

Purification and Storage

Purified from goat serum by ammonium sulphate precipitation followed by antigen affinity chromatography using the immunizing peptide.

Supplied at 0.5 mg/ml in Tris saline, 0.02% sodium azide, pH7.3 with 0.5% bovine serum albumin.

Aliquot and store at -20°C. Minimize freezing and thawing.

Applications Tested

Peptide ELISA: antibody detection limit dilution 1:128000.

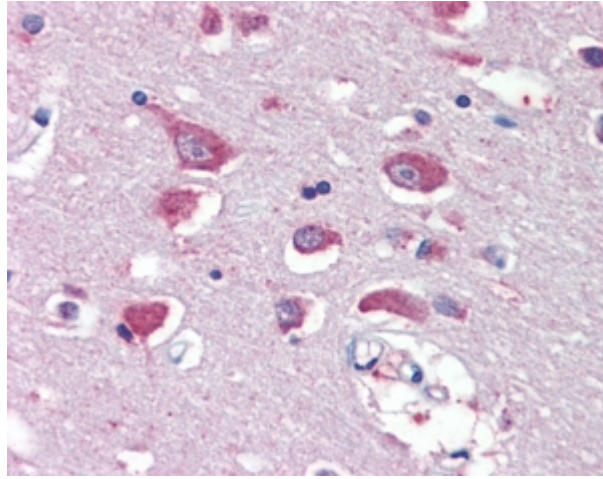
Western blot: Approx. 100kDa band observed in Human Brain (Cerebellum) lysates (calculated MW of 99.2kDa according to NP_001070711.2). Recommended concentration: 1-2µg/ml. Primary incubation 1 hour at room temperature.

IHC: In paraffin embedded Human Cortex shows cytoplasm staining of neuronal cells. Recommended concentration, 5-10µg/ml.

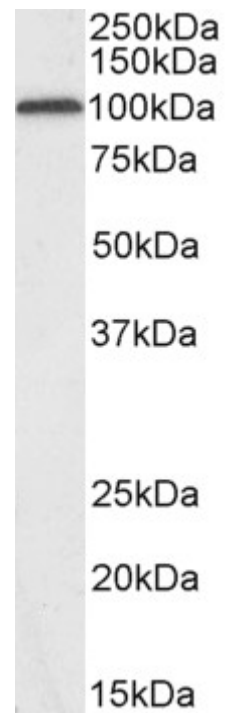
Species Reactivity

Tested: Human

Expected from sequence similarity: Human, Mouse, Rat, Cow



EB08518 (5µg/ml) staining of paraffin embedded Human Cortex. Steamed antigen retrieval with citrate buffer pH 6, AP-staining.



EB08518 (2µg/ml) staining of Human Cerebellum lysate (35µg protein in RIPA buffer). Detected by chemiluminescence.