



UK Office

Everest Biotech Ltd

Cherwell Innovation Centre
77 Heyford Park
Upper Heyford
Oxfordshire
OX25 5HD
UK

Enquiries:

info@everestbiotech.com

Sales:

sales@everestbiotech.com

Tech support:

support@everestbiotech.com

Tel: +44 (0)1869 238326

Fax: +44 (0)1869 238327

US Office

Everest Biotech c/o Abcore

405 Maple Street, Suite A106
Ramona,
CA 92065
USA

Inquiries:

info@everestbiotech.com

Sales:

usasales@everestbiotech.com

Tech support:

support@everestbiotech.com

Tel: 888-320-4628 (toll-free)

Fax: 888-841-9041

www.everestbiotech.com

**Research Use Only. Not for
diagnostic or therapeutic use.**

EB11313 - Goat Anti-GRIN2A (aa211-224) Antibody

Size: 100µg specific antibody in 200µl

Target Protein

Principal Names: glutamate [NMDA] receptor subunit epsilon-1, glutamate receptor, ionotropic, N-methyl D-aspartate 2A, hNR2A, NMDA receptor subtype 2A, NMDAR2A, N-methyl D-aspartate receptor subtype 2A, N-methyl-D-aspartate receptor channel, subunit epsilon-1, N-methyl-D-aspartate receptor subunit 2A, NR2A, OTTHUMP00000160135, OTTHUMP00000174531, GRIN2A

Official Symbol: GRIN2A

Accession Number(s): NP_000824.1; NP_001127880.1

Human GeneID(s): [2903](#)

Non-Human GeneID(s): 14811 (mouse), 24409 (rat)

Important Comments: This antibody is expected to recognize both reported isoforms (NP_000824.1; NP_001127880.1). The immunizing peptide represents part of an extra-cellular domain. Reported variants represent identical protein: NP_001127879.1, NP_000824.1

Immunogen

Peptide with sequence C-EDAKTQVQLKKIHS, from the internal region of the protein sequence according to NP_000824.1; NP_001127880.1.

Please note the [peptide](#) is available for sale.

Purification and Storage

Purified from goat serum by ammonium sulphate precipitation followed by antigen affinity chromatography using the immunizing peptide.

Supplied at 0.5 mg/ml in Tris saline, 0.02% sodium azide, pH7.3 with 0.5% bovine serum albumin.

Aliquot and store at -20°C. Minimize freezing and thawing.

Applications Tested

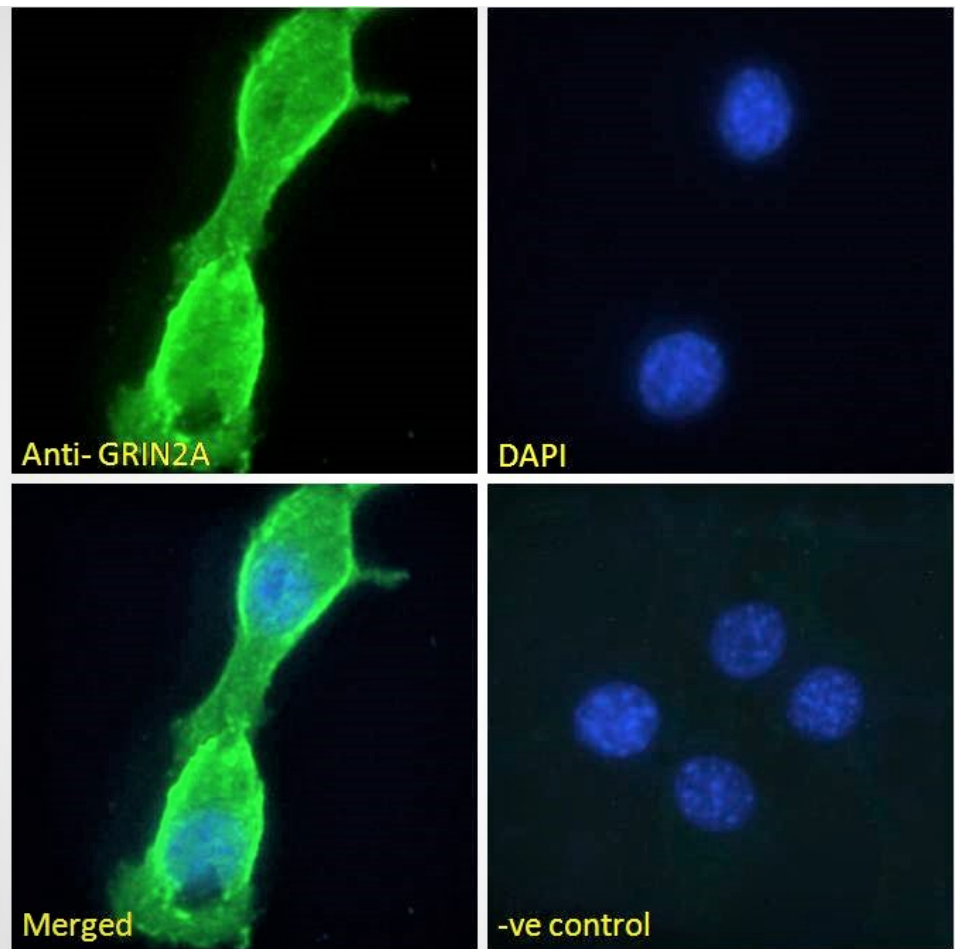
Peptide ELISA: antibody detection limit dilution 1:16000.

Immunofluorescence: Strong expression of the protein seen in the plasma membrane of NIH3T3 cells. Recommended concentration: 10µg/ml.

Species Reactivity

Tested: Mouse

Expected from sequence similarity: Human, Mouse, Rat, Dog



EB11313 Immunofluorescence analysis of paraformaldehyde fixed NIH3T3 cells, permeabilized with 0.15% Triton. Primary incubation 1hr (10ug/ml) followed by Alexa Fluor 488 secondary antibody (2ug/ml), showing membrane staining. The nuclear stain is DAPI (blue). Negative control: Unimmunized goat IgG (10ug/ml) followed by Alexa Fluor 488 secondary antibody (2ug/ml).