



UK Office

Everest Biotech Ltd

Cherwell Innovation Centre
77 Heyford Park
Upper Heyford
Oxfordshire
OX25 5HD
UK

Enquiries:

info@everestbiotech.com

Sales:

sales@everestbiotech.com

Tech support:

support@everestbiotech.com

Tel: +44 (0)1869 238326

Fax: +44 (0)1869 238327

US Office

Everest Biotech c/o Abcore

405 Maple Street, Suite A106
Ramona,
CA 92065
USA

Inquiries:

info@everestbiotech.com

Sales:

usasales@everestbiotech.com

Tech support:

support@everestbiotech.com

Tel: 888-320-4628 (toll-free)

Fax: 888-841-9041

www.everestbiotech.com

**Research Use Only. Not for
diagnostic or therapeutic use.**

EB10214 - Goat Anti-GRM2 Antibody

Size: 100µg specific antibody in 200µl



Target Protein

Principal Names: GLUR2, glutamate metabotropic receptor 2, glutamate receptor homolog, glutamate receptor, metabotropic 2, GPRC1B, mGlu2, MGLUR2, GRM2

Official Symbol: GRM2

Accession Number(s): NP_000830.2; NP_001123535.1

Human GeneID(s): [2912](#)

Non-Human GeneID(s): 108068 (mouse), 24415 (rat)

Important Comments: This antibody is expected to recognize both isoforms (NP_000830.2; NP_001123535.1).

Immunogen

Peptide with sequence C-KETAPERREV, from the internal region of the protein sequence according to NP_000830.2; NP_001123535.1.

Please note the [peptide](#) is available for sale.

Purification and Storage

Purified from goat serum by ammonium sulphate precipitation followed by antigen affinity chromatography using the immunizing peptide.

Supplied at 0.5 mg/ml in Tris saline, 0.02% sodium azide, pH7.3 with 0.5% bovine serum albumin.

Aliquot and store at -20°C. Minimize freezing and thawing.

Applications Tested

Peptide ELISA: antibody detection limit dilution 1:16000.

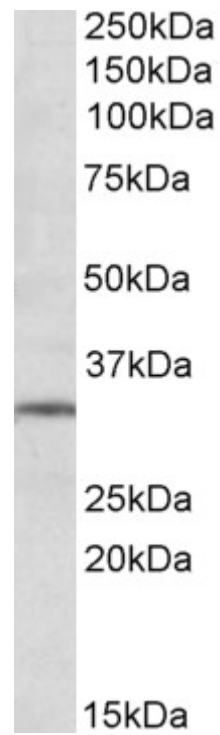
Western blot: Approx 30kDa band observed in Human Brain (Hippocampus) lysates (calculated MW of 27.5kDa according to NP_001123535.1). Recommended concentration: 1-3µg/ml.

IHC: In paraffin embedded Human Cerebral Cortex shows membranous/axonal staining. Recommended concentration, 3-5µg/ml.

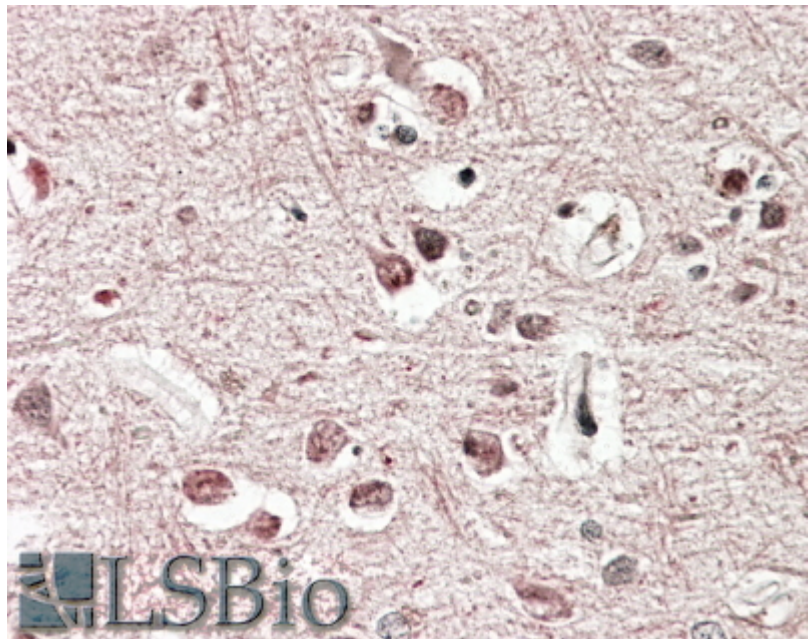
Species Reactivity

Tested: Human

Expected from sequence similarity: Human, Mouse, Rat, Dog, Cow



EB10214 (1 μ g/ml) staining of Human Hippocampus lysate (35 μ g protein in RIPA buffer). Primary incubation was 1 hour. Detected by chemiluminescence.



EB10214 (3.8 μ g/ml) staining of paraffin embedded Human Cerebral Cortex. Steamed antigen retrieval with citrate buffer pH 6, AP-staining.