

## UK Office

### Everest Biotech Ltd

Cherwell Innovation Centre  
77 Heyford Park  
Upper Heyford  
Oxfordshire  
OX25 5HD  
UK

Enquiries:

[info@everestbiotech.com](mailto:info@everestbiotech.com)

Sales:

[sales@everestbiotech.com](mailto:sales@everestbiotech.com)

Tech support:

[support@everestbiotech.com](mailto:support@everestbiotech.com)

Tel: +44 (0)1869 238326

[www.everestbiotech.com](http://www.everestbiotech.com)

**Research Use Only. Not for  
diagnostic or therapeutic use.**

## EB10728 - Goat Anti-Gsta3 (rat) Antibody

Size: 100µg specific antibody in 200µl



### Target Protein

**Principal Names:** Gsta3, glutathione S-transferase A3, Gsta1, Gsta5, MGC112704, Yc1, GST 2-2, GST A3-3, GST AA, Glutathione-S-transferase alpha type (Ya), glutathione S-transferase A3 subunit, glutathione S-transferase A5, glutathione S-transferase Yc-1, glutathio

**Official Symbol:** Gsta1

**Accession Number(s):** NP\_113697.1

**Non-Human GeneID(s):** 24421 (rat)

**Important Comments:** Reported variants represent identical protein: NP\_001009920.1, NP\_001153211.1. Please note that this antibody is not expected to cross-react to Rat Gsta5.

### Immunogen

Peptide with sequence C-ELDPSALANFLLK, from the internal region of the protein sequence according to NP\_113697.1.

Please note the [peptide](#) is available for sale.

### Purification and Storage

Purified from goat serum by ammonium sulphate precipitation followed by antigen affinity chromatography using the immunizing peptide.

Supplied at 0.5 mg/ml in Tris saline, 0.02% sodium azide, pH7.3 with 0.5% bovine serum albumin.

Aliquot and store at -20°C. Minimize freezing and thawing.

### Applications Tested

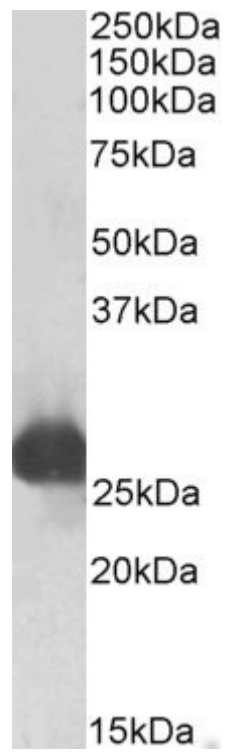
**Peptide ELISA:** antibody detection limit dilution 1:8000.

**Western blot:** Approx 26kDa band observed in Rat Liver lysates (calculated MW of 25.3kDa according to NP\_113697.1). Recommended concentration: 0.1-0.3µg/ml.

### Species Reactivity

**Tested:** Rat

**Expected from sequence similarity:** Rat, Pig, Cow



EB10728 (0.1 $\mu$ g/ml) staining of Rat Liver lysate (35 $\mu$ g protein in RIPA buffer). Primary incubation was 1 hour.  
Detected by chemiluminescence.