

## UK Office

### Everest Biotech Ltd

Cherwell Innovation Centre  
77 Heyford Park  
Upper Heyford  
Oxfordshire  
OX25 5HD  
UK

Enquiries:

[info@everestbiotech.com](mailto:info@everestbiotech.com)

Sales:

[sales@everestbiotech.com](mailto:sales@everestbiotech.com)

Tech support:

[support@everestbiotech.com](mailto:support@everestbiotech.com)

Tel: +44 (0)1869 238326

[www.everestbiotech.com](http://www.everestbiotech.com)

**Research Use Only. Not for  
diagnostic or therapeutic use.**

## EB13026 - Goat Anti-GSTM4 Antibody

Size: 100µg specific antibody in 200µl



### Target Protein

**Principal Names:** GSTM4, glutathione S-transferase mu 4, GSTM4-4, GTM4, GST class-mu 4, GST-Mu2, GTS-Mu2, S-(hydroxyalkyl)glutathione lyase M4, glutathione S-alkyltransferase M4, glutathione S-aralkyltransferase M4, glutathione S-aryltransferase M4, glutathione S-transferase

**Official Symbol:** GSTM4

**Accession Number(s):** NP\_000841.1; NP\_671489.1

**Human GeneID(s):** [2948](#)

**Non-Human GeneID(s):** 14865 (mouse), 499689 (rat)

**Important Comments:** This antibody is expected to recognize both reported isoforms (NP\_000841.1; NP\_671489.1).

### Immunogen

Peptide with sequence DVSNQLARVCYSPD, from the internal region of the protein sequence according to NP\_000841.1; NP\_671489.1.

Please note the [peptide](#) is available for sale.

### Purification and Storage

Purified from goat serum by ammonium sulphate precipitation followed by antigen affinity chromatography using the immunizing peptide.

Supplied at 0.5 mg/ml in Tris saline, 0.02% sodium azide, pH7.3 with 0.5% bovine serum albumin.

Aliquot and store at -20°C. Minimize freezing and thawing.

### Applications Tested

**Peptide ELISA:** antibody detection limit dilution 1:128000.

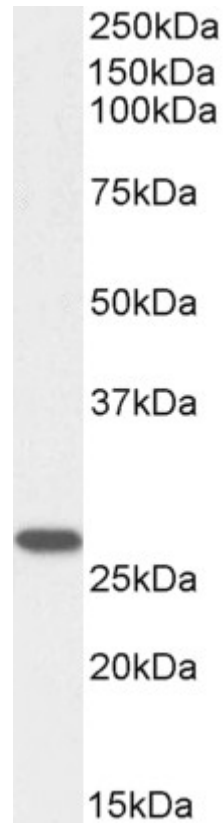
**Western blot:** Approx 26kDa band observed in lysates of cell line HeLa and in Rat Lung lysates (calculated MW of 25.6kDa according to Human NP\_000841.1 and Rat NP\_001019475.1 ). Recommended concentration: 0.1-0.3µg/ml. Primary incubation was 1 hour.

**IHC:** Paraffin embedded Human Tonsil. Recommended concentration: 5µg/ml.

### Species Reactivity

**Tested:** Human, Rat

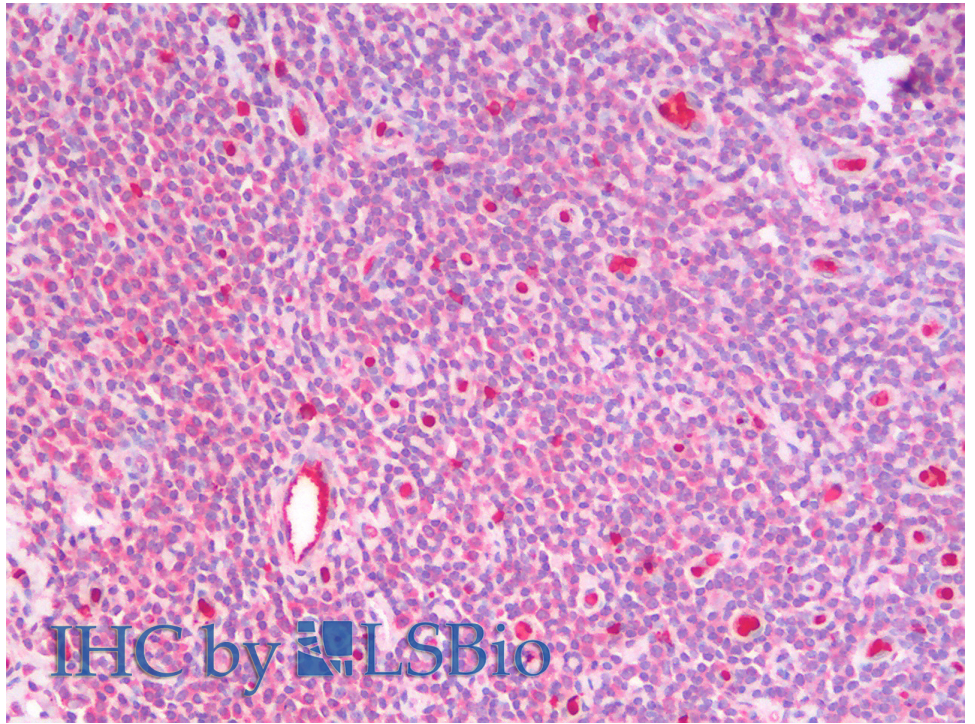
**Expected from sequence similarity:** Human, Mouse, Rat



EB13026 (0.1 $\mu$ g/ml) staining of HeLa lysate (35 $\mu$ g protein in RIPA buffer). Primary incubation was 1 hour. Detected by chemiluminescence.



EB13026 (0.3 $\mu$ g/ml) staining of Rat Lung lysate (35 $\mu$ g protein in RIPA buffer). Detected by chemiluminescence.



EB13026 (5µg/ml) staining of paraffin embedded Human Tonsil. Steamed antigen retrieval with citrate buffer pH 6, AP-staining.