



UK Office

Everest Biotech Ltd

Cherwell Innovation Centre
77 Heyford Park
Upper Heyford
Oxfordshire
OX25 5HD
UK

Enquiries:

info@everestbiotech.com

Sales:

sales@everestbiotech.com

Tech support:

support@everestbiotech.com

Tel: +44 (0)1869 238326

Fax: +44 (0)1869 238327

US Office

Everest Biotech c/o Abcore

405 Maple Street, Suite A106
Ramona,
CA 92065
USA

Inquiries:

info@everestbiotech.com

Sales:

usasales@everestbiotech.com

Tech support:

support@everestbiotech.com

Tel: 888-320-4628 (toll-free)

Fax: 888-841-9041

www.everestbiotech.com

**Research Use Only. Not for
diagnostic or therapeutic use.**

EB13026 - Goat Anti-GSTM4 Antibody

Size: 100µg specific antibody in 200µl



Target Protein

Principal Names: GSTM4, glutathione S-transferase mu 4, GSTM4-4, GTM4, GST class-mu 4, GST-Mu2, GTS-Mu2, S-(hydroxyalkyl)glutathione lyase M4, glutathione S-alkyltransferase M4, glutathione S-aralkyltransferase M4, glutathione S-aryltransferase M4, glutathione S-transferase M4, glutathione S-transferase

Official Symbol: GSTM4

Accession Number(s): NP_000841.1; NP_671489.1

Human GeneID(s): [2948](#)

Non-Human GeneID(s): 14865 (mouse), 499689 (rat)

Important Comments: This antibody is expected to recognize both reported isoforms (NP_000841.1; NP_671489.1).

Immunogen

Peptide with sequence DVSNQLARVCYSPD, from the internal region of the protein sequence according to NP_000841.1; NP_671489.1.

Please note the [peptide](#) is available for sale.

Purification and Storage

Purified from goat serum by ammonium sulphate precipitation followed by antigen affinity chromatography using the immunizing peptide.

Supplied at 0.5 mg/ml in Tris saline, 0.02% sodium azide, pH7.3 with 0.5% bovine serum albumin.

Aliquot and store at -20°C. Minimize freezing and thawing.

Applications Tested

Peptide ELISA: antibody detection limit dilution 1:128000.

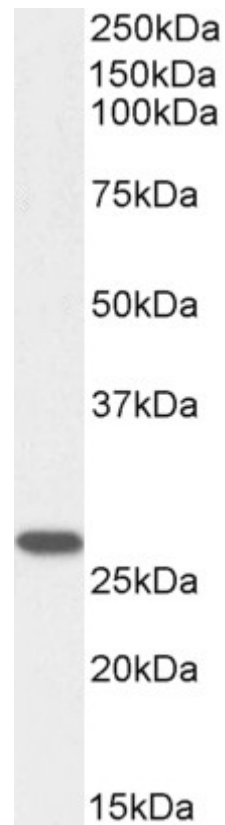
Western blot: Approx 26kDa band observed in lysates of cell line HeLa and in Rat Lung lysates (calculated MW of 25.6kDa according to Human NP_000841.1 and Rat NP_001019475.1). Recommended concentration: 0.1-0.3µg/ml. Primary incubation was 1 hour.

IHC: Paraffin embedded Human Tonsil. Recommended concentration: 5µg/ml.

Species Reactivity

Tested: Human, Rat

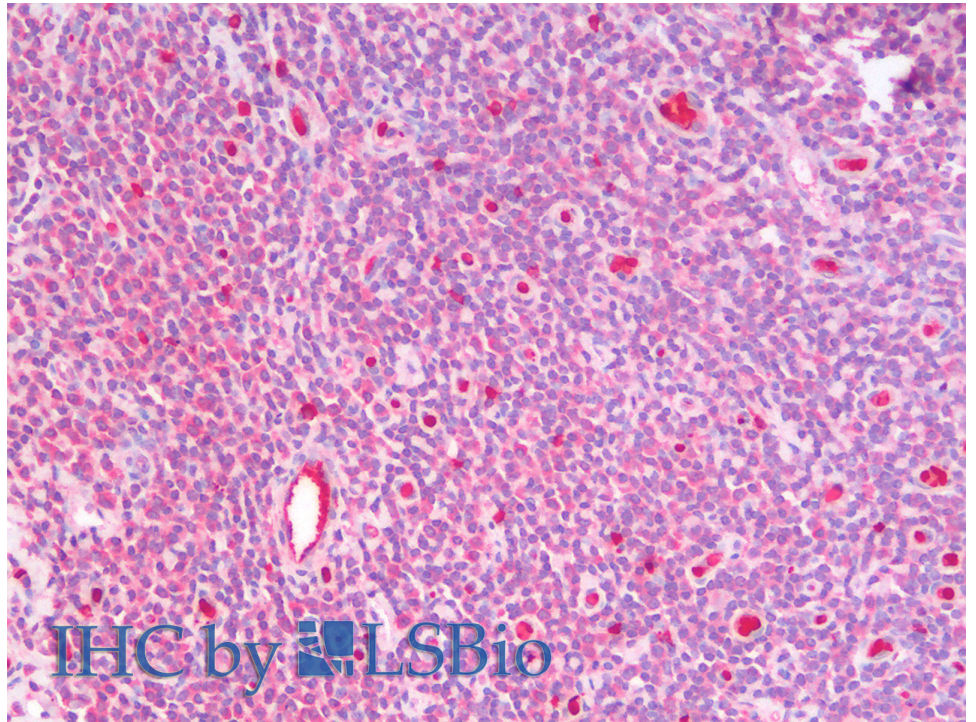
Expected from sequence similarity: Human, Mouse, Rat



EB13026 (0.1 μ g/ml) staining of HeLa lysate (35 μ g protein in RIPA buffer). Primary incubation was 1 hour.
Detected by chemiluminescence.



EB13026 (0.3 μ g/ml) staining of Rat Lung lysate (35 μ g protein in RIPA buffer). Detected by chemiluminescence.



EB13026 (5µg/ml) staining of paraffin embedded Human Tonsil. Steamed antigen retrieval with citrate buffer pH 6, AP-staining.