



UK Office

Everest Biotech Ltd

Cherwell Innovation Centre
77 Heyford Park
Upper Heyford
Oxfordshire
OX25 5HD
UK

Enquiries:

info@everestbiotech.com

Sales:

sales@everestbiotech.com

Tech support:

support@everestbiotech.com

Tel: +44 (0)1869 238326

Fax: +44 (0)1869 238327

US Office

Everest Biotech c/o Abcore

405 Maple Street, Suite A106
Ramona,
CA 92065
USA

Inquiries:

info@everestbiotech.com

Sales:

usasales@everestbiotech.com

Tech support:

support@everestbiotech.com

Tel: 888-320-4628 (toll-free)

Fax: 888-841-9041

www.everestbiotech.com

**Research Use Only. Not for
diagnostic or therapeutic use.**

EB05447 - Goat Anti-GULP1 / CED6 Antibody

Size: 100µg specific antibody in 200µl



Target Protein

Principal Names: CED-6, GULP1, CED-6 protein, GULP, engulfment adaptor PTB domain containing 1, CED6, FLJ31156, OTTHUMP00000205908, OTTHUMP00000205909, OTTHUMP00000205911, PTB domain adaptor protein CED-6, engulfment adapter protein

Official Symbol: GULP1

Accession Number(s): NP_057399.1

Human GeneID(s): [51454](#)

Non-Human GeneID(s): 70676 (mouse)

Immunogen

Peptide with sequence EGTVFCLDPLDSRC, from the C Terminus of the protein sequence according to NP_057399.1.

Please note the [peptide](#) is available for sale.

Purification and Storage

Purified from goat serum by ammonium sulphate precipitation followed by antigen affinity chromatography using the immunizing peptide.

Supplied at 0.5 mg/ml in Tris saline, 0.02% sodium azide, pH7.3 with 0.5% bovine serum albumin.

Aliquot and store at -20°C. Minimize freezing and thawing.

Applications Tested

Peptide ELISA: antibody detection limit dilution 1:64000.

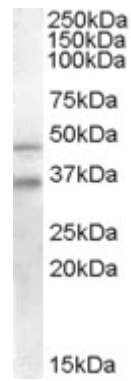
Western blot: Approx 35kDa band observed in Human Placenta lysates (calculated MW of 34.5kDa according to NP_057399.1). Recommended concentration: 0.2-0.6µg/ml. An additional band of unknown identity was also consistently observed at approx.46kDa. This band was successfully blocked by incubation with the immunising peptide.

IHC: In paraffin embedded Human Kidney shows staining of cytoplasm, stronger in a selection of epithelial cells of distal convoluted tubules. Recommended concentration: 5-10 µg/ml.

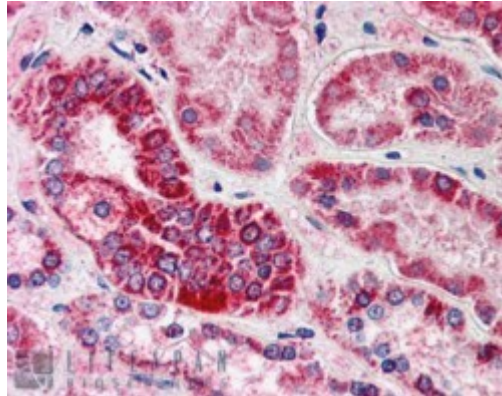
Species Reactivity

Tested: Human

Expected from sequence similarity: Human, Mouse, Rat, Dog



EB05447 staining (0.2 μ g/ml) of Human Placenta lysate (RIPA buffer, 30 μ g total protein per lane). Primary incubated for 1 hour. Detected by chemiluminescence.



EB05447 (5 μ g/ml) staining of paraffin embedded Human Kidney. Steamed antigen retrieval with citrate buffer pH 6, AP-staining.