



UK Office

Everest Biotech Ltd

Cherwell Innovation Centre
77 Heyford Park
Upper Heyford
Oxfordshire
OX25 5HD
UK

Enquiries:

info@everestbiotech.com

Sales:

sales@everestbiotech.com

Tech support:

support@everestbiotech.com

Tel: +44 (0)1869 238326

Fax: +44 (0)1869 238327

US Office

Everest Biotech c/o Abcore

405 Maple Street, Suite A106
Ramona,
CA 92065
USA

Inquiries:

info@everestbiotech.com

Sales:

usasales@everestbiotech.com

Tech support:

support@everestbiotech.com

Tel: 888-320-4628 (toll-free)

Fax: 888-841-9041

www.everestbiotech.com

**Research Use Only. Not for
diagnostic or therapeutic use.**

EB08200 - Goat Anti-HADH / HADHSC Antibody

Size: 100µg specific antibody in 200µl



Target Protein

Principal Names: HADH, HADHSC, hydroxyacyl-Coenzyme A dehydrogenase, HAD, HADH1, HHF4, M/SCHAD, MGC8392, SCHAD, L-3-hydroxyacyl-Coenzyme A dehydrogenase, L-3-hydroxyacyl-Coenzyme A dehydrogenase, short chain

Official Symbol: HADH

Accession Number(s): NP_005318.2

Human GeneID(s): [3033](#)

Non-Human GeneID(s): 15107 (mouse)

Immunogen

Peptide with sequence C-YERGDASKEDID, from the internal region of the protein sequence according to NP_005318.2.

Please note the [peptide](#) is available for sale.

Purification and Storage

Purified from goat serum by ammonium sulphate precipitation followed by antigen affinity chromatography using the immunizing peptide.

Supplied at 0.5 mg/ml in Tris saline, 0.02% sodium azide, pH7.3 with 0.5% bovine serum albumin.

Aliquot and store at -20°C. Minimize freezing and thawing.

Applications Tested

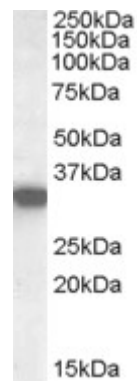
Peptide ELISA: antibody detection limit dilution 1:64000.

Western blot: Approx. 33kDa band observed in Human Heart, Muscle and Kidney lysates (calculated MW of 34.3kDa according to NP_005318.2). In transfected HEK293 transiently expressing HADH a band of approx. 38kDa is observed. This band is not observed in the non-transfected HEK293. Recommended concentration: 0.01-0.03µg/ml.

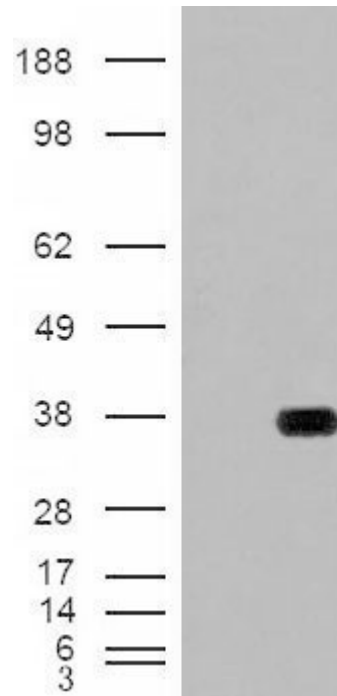
Species Reactivity

Tested: Human

Expected from sequence similarity: Human, Mouse, Rat, Dog



EB08200 (0.02µg/ml) staining of Human Kidney lysate (35µg protein in RIPA buffer). Primary incubation was 1 hour. Detected by chemiluminescence.



HEK293 overexpressing HADH (RC201752) with C-terminal tag (DYKDDDDK) and probed with anti-DYKDDDDK in the left panel and with EB08200 in the right panel (mock transfection in first and last lanes), tested by Origene.