



UK Office

Everest Biotech Ltd

Cherwell Innovation Centre
77 Heyford Park
Upper Heyford
Oxfordshire
OX25 5HD
UK

Enquiries:

info@everestbiotech.com

Sales:

sales@everestbiotech.com

Tech support:

support@everestbiotech.com

Tel: +44 (0)1869 238326

Fax: +44 (0)1869 238327

US Office

Everest Biotech c/o Abcore

405 Maple Street, Suite A106
Ramona,
CA 92065
USA

Inquiries:

info@everestbiotech.com

Sales:

usasales@everestbiotech.com

Tech support:

support@everestbiotech.com

Tel: 888-320-4628 (toll-free)

Fax: 888-841-9041

www.everestbiotech.com

**Research Use Only. Not for
diagnostic or therapeutic use.**

EB09160 - Goat Anti-HAX1 Antibody

Size: 100µg specific antibody in 200µl



Target Protein

Principal Names: HAX1, HCLS1 associated protein X-1, FLJ17042, FLJ18492, FLJ93803, HCLSBP1, HS1BP1, SCN3, HCLS1 (and PKD2) associated protein, HS1 binding protein, OTTHUMP00000034190

Official Symbol: HAX1

Accession Number(s): NP_006109.2; NP_001018238.1

Human GeneID(s): [10456](#)

Important Comments: This antibody is expected to recognize both reported isoforms (NP_006109.2 and NP_001018238.1).

Immunogen

Peptide with sequence C-TRHEADSSPRGDPES, from the internal region of the protein sequence according to NP_006109.2; NP_001018238.1.

Please note the [peptide](#) is available for sale.

Purification and Storage

Purified from goat serum by ammonium sulphate precipitation followed by antigen affinity chromatography using the immunizing peptide.

Supplied at 0.5 mg/ml in Tris saline, 0.02% sodium azide, pH7.3 with 0.5% bovine serum albumin.

Aliquot and store at -20°C. Minimize freezing and thawing.

Applications Tested

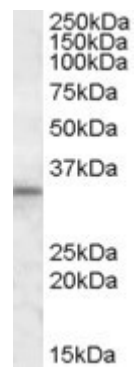
Peptide ELISA: antibody detection limit dilution 1:2000.

Western blot: Approx 33kDa band observed in Human Kidney, Liver and Testis lysates (calculated MW of 31.6kDa according to NP_006109.2). Recommended concentration: 1-3µg/ml.

Species Reactivity

Tested: Human

Expected from sequence similarity: Human



EB09160 (1 μ g/ml) staining of Human Testis lysate (35 μ g protein in RIPA buffer). Primary incubation was 1 hour.
Detected by chemiluminescence.