

## UK Office

### Everest Biotech Ltd

Cherwell Innovation Centre  
77 Heyford Park  
Upper Heyford  
Oxfordshire  
OX25 5HD  
UK

Enquiries:

[info@everestbiotech.com](mailto:info@everestbiotech.com)

Sales:

[sales@everestbiotech.com](mailto:sales@everestbiotech.com)

Tech support:

[support@everestbiotech.com](mailto:support@everestbiotech.com)

Tel: +44 (0)1869 238326

[www.everestbiotech.com](http://www.everestbiotech.com)

**Research Use Only. Not for  
diagnostic or therapeutic use.**

## EB11428 - Goat Anti-Hdac1 (aa385-396) Antibody

Size: 100µg specific antibody in 200µl



### Target Protein

**Principal Names:** HD1, Hdac1-ps, histone deacetylase 1, MGC102534, MGC118085, MommeD5, OTTMUSP00000010171, RP23-209C6.7, RPD3, HDAC1

**Official Symbol:** Hdac1

**Accession Number(s):** NP\_032254.1

**Human GeneID(s):** [3065](#)

**Non-Human GeneID(s):** 433759 (mouse), 84576 (rat)

**Important Comments:** This antibody may cross-react to HDAC2

### Immunogen

Peptide with sequence C-PEDAIPEESGDE, from the internal region of the protein sequence according to NP\_032254.1.

Please note the [peptide](#) is available for sale.

### Purification and Storage

Purified from goat serum by ammonium sulphate precipitation followed by antigen affinity chromatography using the immunizing peptide.

Supplied at 0.5 mg/ml in Tris saline, 0.02% sodium azide, pH7.3 with 0.5% bovine serum albumin.

Aliquot and store at -20°C. Minimize freezing and thawing.

### Applications Tested

**Peptide ELISA:** antibody detection limit dilution 1:1000.

**Western blot:** Approx 55kDa band observed in lysates of cell line NIH3T3 (calculated MW of 55.1kDa according to Human NP\_032254.1 and Mouse NP\_032254.1).

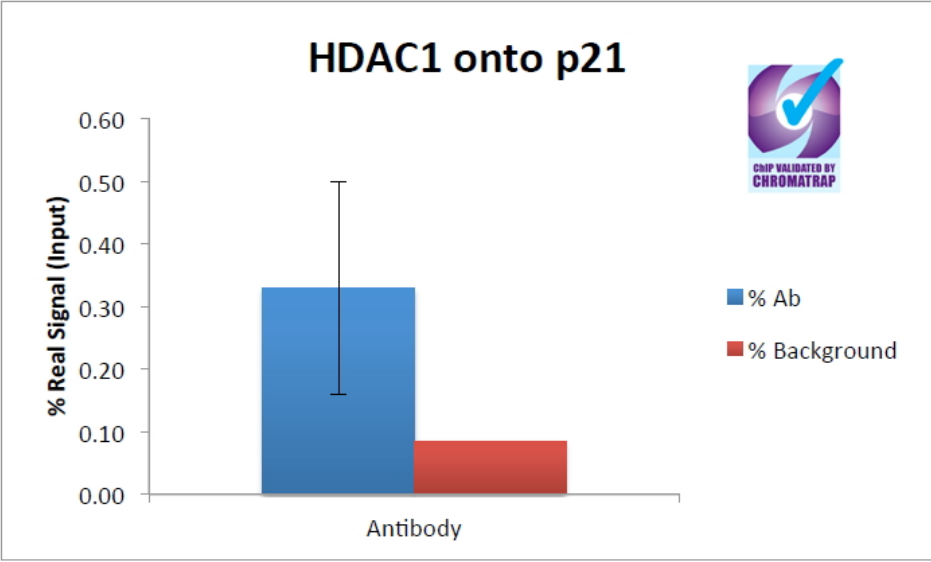
Recommended concentration: 0.3-1µg/ml.

**Chromatin Immunoprecipitation:** A 4-fold increased presence of H3 onto the Human P21 locus observed when comparing the precipitations using EB11428 with non-specific goat IgG to bring down HDAC1 in a chromatin lysate from MCF7 cells.

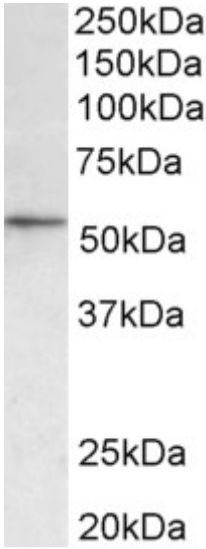
### Species Reactivity

**Tested:** Human, Mouse

**Expected from sequence similarity:** Human, Mouse, Rat, Pig, Cow



ChIP of 2ug EB11428 with MCF7 chromatin using the Chromatrap® spin column sonication kit (Protein G) measuring H3 enrichment onto the p21 locus.



EB11428 (0.3µg/ml) staining of NIH3T3 lysate (35µg protein in RIPA buffer). Primary incubation was 1 hour. Detected by chemiluminescence.