



UK Office

Everest Biotech Ltd

Cherwell Innovation Centre
77 Heyford Park
Upper Heyford
Oxfordshire
OX25 5HD
UK

Enquiries:

info@everestbiotech.com

Sales:

sales@everestbiotech.com

Tech support:

support@everestbiotech.com

Tel: +44 (0)1869 238326

Fax: +44 (0)1869 238327

US Office

Everest Biotech c/o Abcore

405 Maple Street, Suite A106
Ramona,
CA 92065
USA

Inquiries:

info@everestbiotech.com

Sales:

usasales@everestbiotech.com

Tech support:

support@everestbiotech.com

Tel: 888-320-4628 (toll-free)

Fax: 888-841-9041

www.everestbiotech.com

**Research Use Only. Not for
diagnostic or therapeutic use.**

EB06964 - Goat Anti-HEXIM1 Antibody

Size: 100µg specific antibody in 200µl



Target Protein

Principal Names: HEXIM1, hexamethylene bis-acetamide inducible 1, HGNC:24953, CLP1, HIS1, MAQ1, HMBA-inducible, hexamethylene bisacetamide-inducible protein, hexamethylene-bis-acetamide-inducible transcript 1, hexamethylene bis-acetamide inducible 1, menage a quatre 1, EDG1, FLJ13562

Official Symbol: HEXIM1

Accession Number(s): NP_006451.1

Human GeneID(s): [10614](#)

Non-Human GeneID(s): 192231 (mouse)

Immunogen

Peptide with sequence C-HRQQERAPLSKFGD, from the C Terminus of the protein sequence according to NP_006451.1.

Please note the [peptide](#) is available for sale.

Purification and Storage

Purified from goat serum by ammonium sulphate precipitation followed by antigen affinity chromatography using the immunizing peptide.

Supplied at 0.5 mg/ml in Tris saline, 0.02% sodium azide, pH7.3 with 0.5% bovine serum albumin.

Aliquot and store at -20°C. Minimize freezing and thawing.

Applications Tested

Peptide ELISA: antibody detection limit dilution 1:128000.

Western blot: Approx 40kDa band observed in Human and Mouse Heart lysates (calculated MW of 40.6kDa according to Human NP_006451.1 and 40.2kDa according to Mouse NP_620092.1. Recommended concentration: 0.1-0.3µg/ml. Primary incubation 1 hour at room temperature.

Immunofluorescence: Strong expression of the protein seen in the nucleus of A431 and HeLa cells. Recommended concentration: 10µg/ml.

Species Reactivity

Tested: Human, Mouse

Expected from sequence similarity: Human, Mouse

Specific References

This antibody has been successfully used in the following paper:

Zhijia Wang, Samu V. Himanen, Heidi M. Haikala, Caroline C. Friedel, Anniina Vihervaara, Matjaž Barborič

Inhibition of CDK12 elevates cancer cell dependence on P-TEFb by stimulation of RNA polymerase II pause release

(2023) <https://doi.org/10.1101/2023.03.21.533608>

PMID: 0

This antibody (previous batch) has been successfully used in IP on Human:

Andrii Bugai, Alexandre J.C. Quaresma, Caroline C. Friedel, Tina Lenasi, Christopher R. Sibley, Petra Kukanja, Koh Fujinaga, Melanie Blasius, Thomas Hennig, Jernej Ule, Lars Dölken, Matjaž Barborič

P-TEFb activation by RBM7 shapes a pro-survival transcriptional response to genotoxic

stress

Mol Cell. 2019 Apr 18;74(2):254-267.e10.

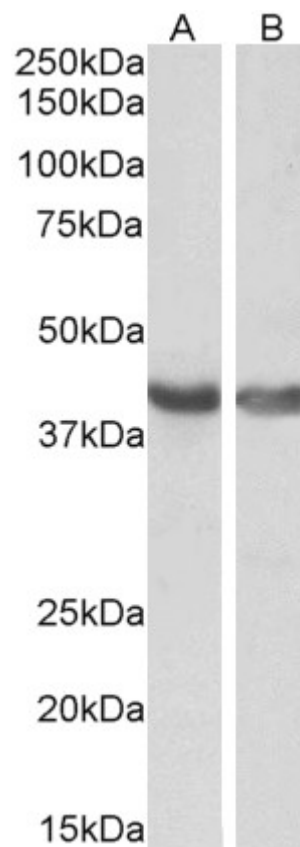
PMID: 30824372

This antibody (previous batch) has been successfully used in Western blot on Human:

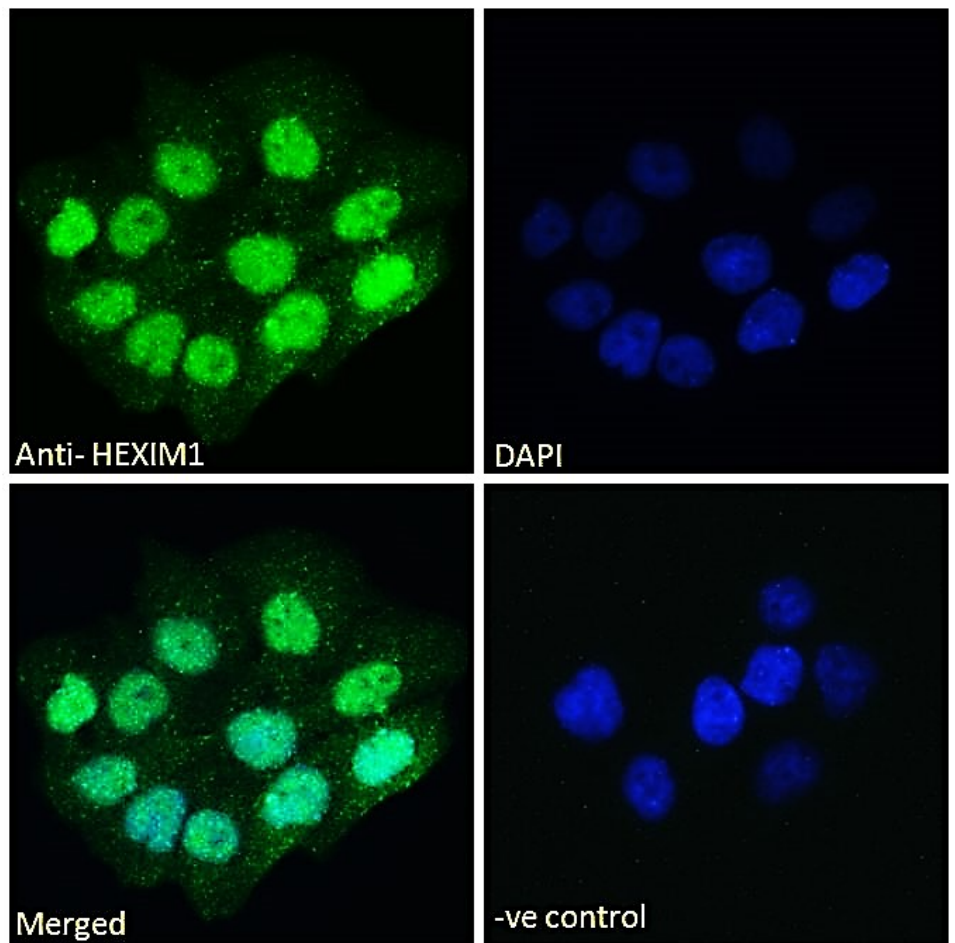
Dalibor Blazek, Fernando Teque, Carl Mackewicz, Matija Peterlin and Jay A. Levy.
The CD8+ cell non-cytotoxic antiviral response affects RNA polymerase II-mediated human immunodeficiency virus transcription in infected CD4+ cells.

J Gen Virol. 2016 Jan;97(1):220-4.

PMID: 26499373

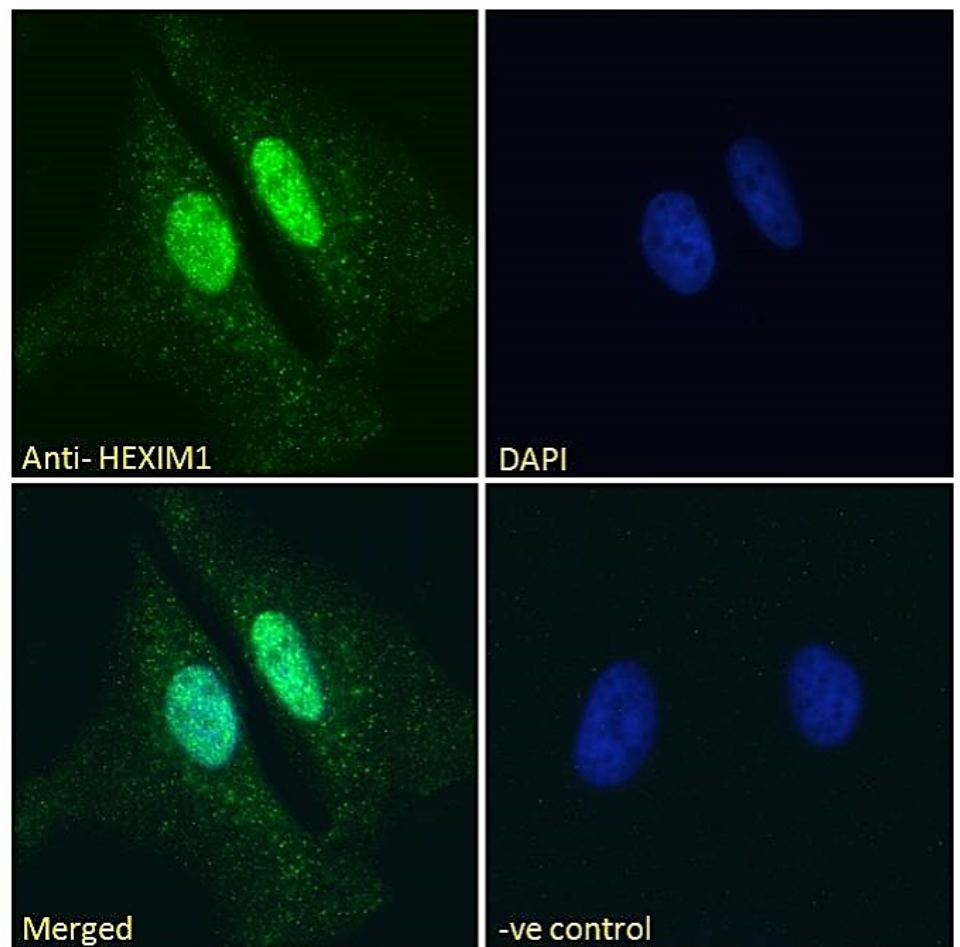


EB06964 (0.1µg/ml) staining of Human (A) and Mouse (B) Heart lysates (35µg protein in RIPA buffer). Detected by chemiluminescence.



EB06964 Immunofluorescence analysis of paraformaldehyde fixed A431 cells, permeabilized with 0.15% Triton.

Primary incubation 1hr (10ug/ml) followed by Alexa Fluor 488 secondary antibody (2ug/ml), showing nuclear staining. The nuclear stain is DAPI (blue). Negative control: Unimmunized goat IgG (10ug/ml) followed by Alexa Fluor 488 secondary antibody (2ug/ml).



EB06964 Immunofluorescence analysis of paraformaldehyde fixed HeLa cells, permeabilized with 0.15% Triton.

Primary incubation 1hr (10ug/ml) followed by Alexa Fluor 488 secondary antibody (2ug/ml), showing nuclear staining. The nuclear stain is DAPI (blue). Negative control: Unimmunized goat IgG (10ug/ml) followed by Alexa Fluor 488 secondary antibody (2ug/ml).