

## UK Office

### Everest Biotech Ltd

Cherwell Innovation Centre  
77 Heyford Park  
Upper Heyford  
Oxfordshire  
OX25 5HD  
UK

Enquiries:

[info@everestbiotech.com](mailto:info@everestbiotech.com)

Sales:

[sales@everestbiotech.com](mailto:sales@everestbiotech.com)

Tech support:

[support@everestbiotech.com](mailto:support@everestbiotech.com)

Tel: +44 (0)1869 238326

[www.everestbiotech.com](http://www.everestbiotech.com)

**Research Use Only. Not for  
diagnostic or therapeutic use.**

## EB11678 - Goat Anti-HIC1 (aa193-204) Antibody

Size: 100µg specific antibody in 200µl



### Target Protein

**Principal Names:** HIC1, hic-1, hypermethylated in cancer 1, hypermethylated in cancer 1 protein, ZBTB29, zinc finger and BTB domain-containing protein 29, ZNF901

**Official Symbol:** HIC1

**Accession Number(s):** NP\_006488.2; NP\_001091672.1

**Human GeneID(s):** [3090](#)

**Non-Human GeneID(s):** 15248 (mouse), 303310 (rat)

**Important Comments:** This antibody is expected to recognize both reported isoforms (NP\_006488.2; NP\_001091672.1).

### Immunogen

Peptide with sequence NTHCAELYASGP, from the internal region of the protein sequence according to NP\_006488.2; NP\_001091672.1.

Please note the [peptide](#) is available for sale.

### Purification and Storage

Purified from goat serum by ammonium sulphate precipitation followed by antigen affinity chromatography using the immunizing peptide.

Supplied at 0.5 mg/ml in Tris saline, 0.02% sodium azide, pH7.3 with 0.5% bovine serum albumin.

Aliquot and store at -20°C. Minimize freezing and thawing.

### Applications Tested

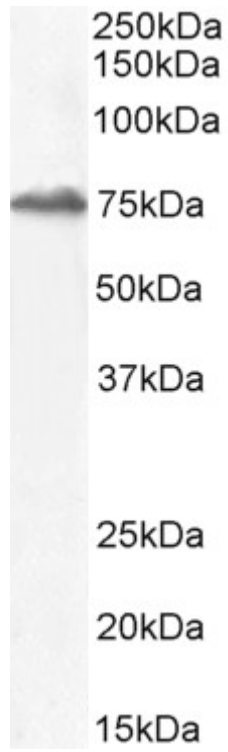
**Peptide ELISA:** antibody detection limit dilution 1:128000.

**Western blot:** Approx 75kDa band observed in Mouse Testis lysates (calculated MW of 76.8kDa according to Mouse NP\_001091673.1 ). Recommended concentration: 2-3µg/ml. Primary incubation 1 hour at room temperature.

### Species Reactivity

**Tested:** Mouse

**Expected from sequence similarity:** Human, Mouse, Rat, Dog, Pig



EB11678 (2 $\mu$ g/ml) staining of Mouse Testes lysate (35 $\mu$ g protein in RIPA buffer). Detected by chemiluminescence.