



UK Office

Everest Biotech Ltd

Cherwell Innovation Centre
77 Heyford Park
Upper Heyford
Oxfordshire
OX25 5HD
UK

Enquiries:

info@everestbiotech.com

Sales:

sales@everestbiotech.com

Tech support:

support@everestbiotech.com

Tel: +44 (0)1869 238326

Fax: +44 (0)1869 238327

US Office

Everest Biotech c/o Abcore

405 Maple Street, Suite A106
Ramona,
CA 92065
USA

Inquiries:

info@everestbiotech.com

Sales:

usasales@everestbiotech.com

Tech support:

support@everestbiotech.com

Tel: 888-320-4628 (toll-free)

Fax: 888-841-9041

www.everestbiotech.com

**Research Use Only. Not for
diagnostic or therapeutic use.**

EB11678 - Goat Anti-HIC1 (aa193-204) Antibody

Size: 100µg specific antibody in 200µl



Target Protein

Principal Names: HIC1, hic-1, hypermethylated in cancer 1, hypermethylated in cancer 1 protein, ZBTB29, zinc finger and BTB domain-containing protein 29, ZNF901

Official Symbol: HIC1

Accession Number(s): NP_006488.2; NP_001091672.1

Human GeneID(s): [3090](#)

Non-Human GeneID(s): 15248 (mouse), 303310 (rat)

Important Comments: This antibody is expected to recognize both reported isoforms (NP_006488.2; NP_001091672.1).

Immunogen

Peptide with sequence NTHCAELYASGP, from the internal region of the protein sequence according to NP_006488.2; NP_001091672.1.

Please note the [peptide](#) is available for sale.

Purification and Storage

Purified from goat serum by ammonium sulphate precipitation followed by antigen affinity chromatography using the immunizing peptide.

Supplied at 0.5 mg/ml in Tris saline, 0.02% sodium azide, pH7.3 with 0.5% bovine serum albumin.

Aliquot and store at -20°C. Minimize freezing and thawing.

Applications Tested

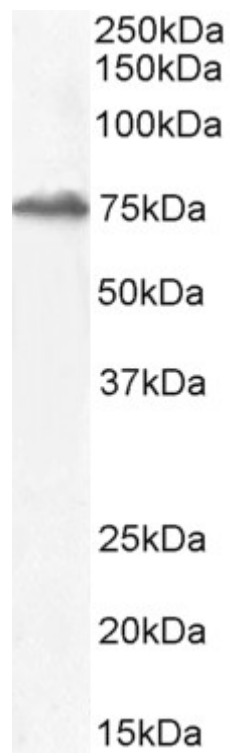
Peptide ELISA: antibody detection limit dilution 1:128000.

Western blot: Approx 75kDa band observed in Mouse Testis lysates (calculated MW of 76.8kDa according to Mouse NP_001091673.1). Recommended concentration: 2-3µg/ml. Primary incubation 1 hour at room temperature.

Species Reactivity

Tested: Mouse

Expected from sequence similarity: Human, Mouse, Rat, Dog, Pig



EB11678 (2 μ g/ml) staining of Mouse Testes lysate (35 μ g protein in RIPA buffer). Detected by chemiluminescence.