

UK Office

Everest Biotech Ltd

Cherwell Innovation Centre
77 Heyford Park
Upper Heyford
Oxfordshire
OX25 5HD
UK

Enquiries:

info@everestbiotech.com

Sales:

sales@everestbiotech.com

Tech support:

support@everestbiotech.com

Tel: +44 (0)1869 238326

www.everestbiotech.com

**Research Use Only. Not for
diagnostic or therapeutic use.**

EB11680 - Goat Anti-HIC2 (aa188-200) Antibody

Size: 100µg specific antibody in 200µl



Target Protein

Principal Names: HIC1-related gene on chromosome 22 protein, HIC2, hic-2, hic-3, HRG22, hypermethylated in cancer 2, hypermethylated in cancer 2 protein, ZBTB30, zinc finger and BTB domain-containing protein 30, ZNF907

Official Symbol: HIC2

Accession Number(s): NP_055909.2

Human GeneID(s): [23119](#)

Non-Human GeneID(s): 58180 (mouse), 287940 (rat)

Immunogen

Peptide with sequence C-PQELPQAKGSDDE, from the internal region of the protein sequence according to NP_055909.2.

Please note the [peptide](#) is available for sale.

Purification and Storage

Purified from goat serum by ammonium sulphate precipitation followed by antigen affinity chromatography using the immunizing peptide.

Supplied at 0.5 mg/ml in Tris saline, 0.02% sodium azide, pH7.3 with 0.5% bovine serum albumin.

Aliquot and store at -20°C. Minimize freezing and thawing.

Applications Tested

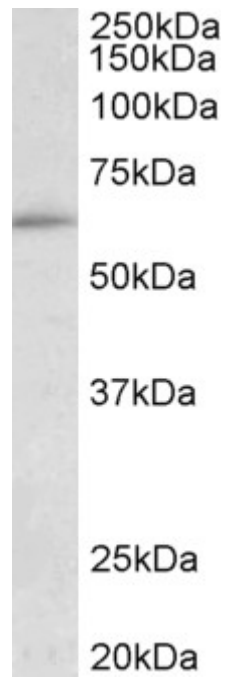
Peptide ELISA: antibody detection limit dilution 1:128000.

Western blot: Approx 60kDa band observed in lysates of cell line HepG2 (calculated MW of 66.2kDa according to NP_055909.2). Recommended concentration: 0.1-0.3µg/ml.

Species Reactivity

Tested: Human

Expected from sequence similarity: Human, Mouse, Rat, Dog, Pig, Cow



EB11680 (0.1 μ g/ml) staining of HepG2 lysate (35 μ g protein in RIPA buffer). Primary incubation was 1 hour.
Detected by chemiluminescence.