

UK Office

Everest Biotech Ltd

Cherwell Innovation Centre
77 Heyford Park
Upper Heyford
Oxfordshire
OX25 5HD
UK

Enquiries:

info@everestbiotech.com

Sales:

sales@everestbiotech.com

Tech support:

support@everestbiotech.com

Tel: +44 (0)1869 238326

www.everestbiotech.com

**Research Use Only. Not for
diagnostic or therapeutic use.**

EB10073 - Goat Anti-HIF3A Antibody

Size: 100µg specific antibody in 200µl



Target Protein

Principal Names: bHLHe17, HIF-3A, HIF-3A2, HIF-3A4, hypoxia inducible factor 3, alpha subunit, hypoxia-inducible factor-3 alpha 4, inhibitory PAS domain protein, IPAS, MOP7, PASD7, HIF3A

Official Symbol: HIF3A

Accession Number(s): NP_690007.1; NP_690008.2

Human GeneID(s): [64344](#)

Non-Human GeneID(s): 53417 (mouse), 64345 (rat)

Important Comments: This antibody is expected to recognize isoform a and c (NP_690007.1; NP_690008.2).

Immunogen

Peptide with sequence QDHRSTTELRKEKS-C, from the N Terminus of the protein sequence according to NP_690007.1; NP_690008.2.

Please note the [peptide](#) is available for sale.

Purification and Storage

Purified from goat serum by ammonium sulphate precipitation followed by antigen affinity chromatography using the immunizing peptide.

Supplied at 0.5 mg/ml in Tris saline, 0.02% sodium azide, pH7.3 with 0.5% bovine serum albumin.

Aliquot and store at -20°C. Minimize freezing and thawing.

Applications Tested

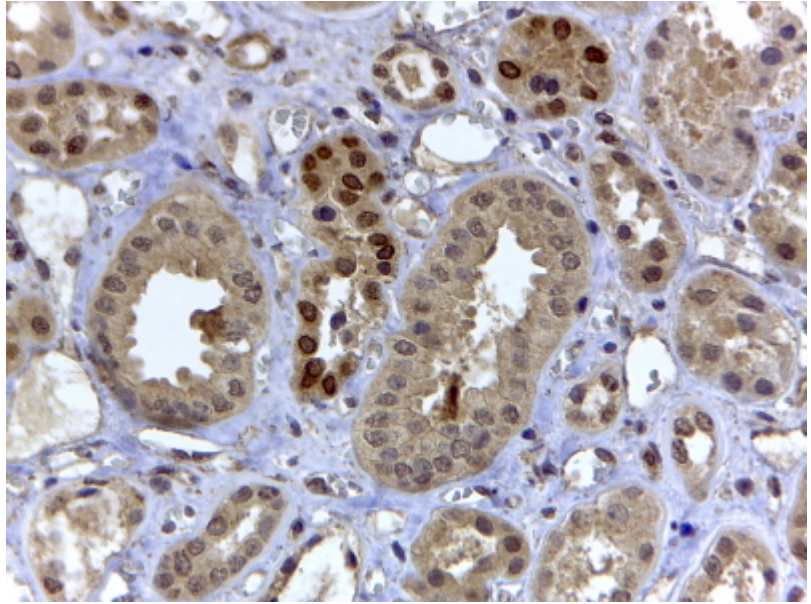
Peptide ELISA: antibody detection limit dilution 1:128000.

IHC: In paraffin embedded Human Kidney shows nuclear staining in some of the DCT. Recommended concentration, 4-6µg/ml.

Species Reactivity

Tested: Human

Expected from sequence similarity: Human, Mouse, Rat



EB10073-D2 (4 μ g/ml) staining of paraffin embedded Human Kidney. Steamed antigen retrieval with citrate buffer pH 6, HRP-staining.