



## UK Office

### Everest Biotech Ltd

Cherwell Innovation Centre  
77 Heyford Park  
Upper Heyford  
Oxfordshire  
OX25 5HD  
UK

Enquiries:

[info@everestbiotech.com](mailto:info@everestbiotech.com)

Sales:

[sales@everestbiotech.com](mailto:sales@everestbiotech.com)

Tech support:

[support@everestbiotech.com](mailto:support@everestbiotech.com)

Tel: +44 (0)1869 238326

Fax: +44 (0)1869 238327

## US Office

### Everest Biotech c/o Abcore

405 Maple Street, Suite A106  
Ramona,  
CA 92065  
USA

Inquiries:

[info@everestbiotech.com](mailto:info@everestbiotech.com)

Sales:

[usasales@everestbiotech.com](mailto:usasales@everestbiotech.com)

Tech support:

[support@everestbiotech.com](mailto:support@everestbiotech.com)

Tel: 888-320-4628 (toll-free)

Fax: 888-841-9041

[www.everestbiotech.com](http://www.everestbiotech.com)

**Research Use Only. Not for  
diagnostic or therapeutic use.**

## EB06640 - Goat Anti-HIP14L / ZDHHC13 Antibody

Size: 100µg specific antibody in 200µl



### Target Protein

**Principal Names:** ZDHHC13, HIP14L, HIP3RP, FLJ10852, FLJ10941, MGC64994, zinc finger, DHHC domain containing 13, HIP14-like, HIP14-related protein, huntingtin interacting protein HIP3RP, hypothetical protein similar to ankyrin repeat-containing protein AKR1, zinc finger, DHHC-type containing 13

**Official Symbol:** ZDHHC13

**Accession Number(s):** NP\_061901.2; NP\_001001483.1

**Human GeneID(s):** [54503](#)

**Non-Human GeneID(s):** 243983 (mouse), 365252 (rat)

**Important Comments:** This antibody is expected to recognise both reported isoforms (NP\_061901.2 and NP\_001001483.1).

### Immunogen

Peptide with sequence C-FHPAREKVLRSV, from the C Terminus of the protein sequence according to NP\_061901.2; NP\_001001483.1.

Please note the [peptide](#) is available for sale.

### Purification and Storage

Purified from goat serum by ammonium sulphate precipitation followed by antigen affinity chromatography using the immunizing peptide.

Supplied at 0.5 mg/ml in Tris saline, 0.02% sodium azide, pH7.3 with 0.5% bovine serum albumin.

Aliquot and store at -20°C. Minimize freezing and thawing.

### Applications Tested

**Peptide ELISA:** antibody detection limit dilution 1:16000.

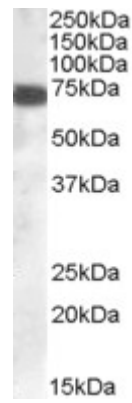
**Western blot:** Approx. 70kDa band observed in Human Brain (Cerebellum) lysates (calculated MW of 70.9kDa according to NP\_061901.2). Recommended concentration: 1-3µg/ml.

**IHC:** Paraffin embedded Human Lung. Recommended concentration: 5µg/ml.

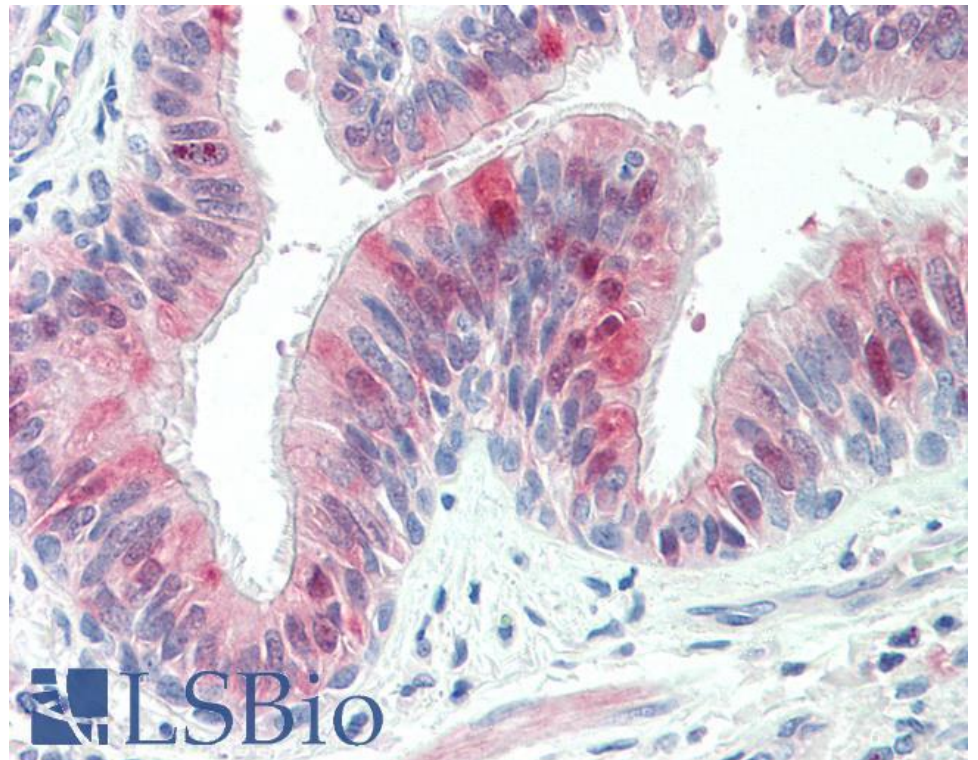
### Species Reactivity

**Tested:** Human

**Expected from sequence similarity:** Human, Mouse, Rat



EB06640 (0.1µg/ml) staining of Human Cerebellum lysate (35µg protein in RIPA buffer). Primary incubation was 1 hour. Detected by chemiluminescence.



EB06640 (5µg/ml) staining of paraffin embedded Human Lung. Steamed antigen retrieval with citrate buffer pH 6, AP-staining.