



## UK Office

### Everest Biotech Ltd

Cherwell Innovation Centre  
77 Heyford Park  
Upper Heyford  
Oxfordshire  
OX25 5HD  
UK

Enquiries:

[info@everestbiotech.com](mailto:info@everestbiotech.com)

Sales:

[sales@everestbiotech.com](mailto:sales@everestbiotech.com)

Tech support:

[support@everestbiotech.com](mailto:support@everestbiotech.com)

Tel: +44 (0)1869 238326

Fax: +44 (0)1869 238327

## US Office

### Everest Biotech c/o Abcore

405 Maple Street, Suite A106  
Ramona,  
CA 92065  
USA

Inquiries:

[info@everestbiotech.com](mailto:info@everestbiotech.com)

Sales:

[usasales@everestbiotech.com](mailto:usasales@everestbiotech.com)

Tech support:

[support@everestbiotech.com](mailto:support@everestbiotech.com)

Tel: 888-320-4628 (toll-free)

Fax: 888-841-9041

[www.everestbiotech.com](http://www.everestbiotech.com)

**Research Use Only. Not for  
diagnostic or therapeutic use.**

## EB05750 - Goat Anti-HIP2 Antibody

Size: 100µg specific antibody in 200µl



### Target Protein

**Principal Names:** UBE2K, HIP2, huntingtin interacting protein 2, LIG, HYPG, ubiquitin-protein ligase, ubiquitin carrier protein, ubiquitin-conjugating enzyme E2-25 KDA, ubiquitin-conjugating enzyme E2K (UBC1 homolog, yeast), DKFZp686J24237, E2-25K

**Official Symbol:** UBE2K

**Accession Number(s):** NP\_005330.1; NP\_001104582.1; NP\_001104583.1

**Human GeneID(s):** [3093](#)

**Important Comments:** This antibody is expected to recognise isoform 1 (NP\_005330.1), isoform 2 (NP\_001104582.1) and isoform 3 (NP\_001104583.1).

### Immunogen

Peptide with sequence C-SWDVETATELLSN, from the C Terminus of the protein sequence according to NP\_005330.1; NP\_001104582.1; NP\_001104583.1.

Please note the [peptide](#) is available for sale.

### Purification and Storage

Purified from goat serum by ammonium sulphate precipitation followed by antigen affinity chromatography using the immunizing peptide.

Supplied at 0.5 mg/ml in Tris saline, 0.02% sodium azide, pH7.3 with 0.5% bovine serum albumin.

Aliquot and store at -20°C. Minimize freezing and thawing.

### Applications Tested

**Peptide ELISA:** antibody detection limit dilution 1:2000.

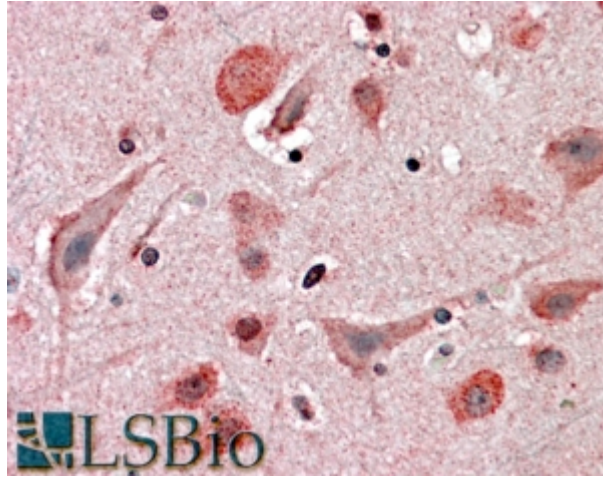
**Western blot:** Approx 24kDa band observed in Jurkat cell lysates (calculated MW of 22.4 kDa according to NP\_005330). Recommended for use at 1-3 µg/ml.

**IHC:** In paraffin embedded Human Brain shows pixulate cytoplasm staining in neurons of the Cortex. Recommended concentration, 1-2µg/ml.

### Species Reactivity

**Tested:** Human

**Expected from sequence similarity:** Human, Mouse, Dog, Pig, Cow



EB05750 (3.8µg/ml) staining of paraffin embedded Human Cortex. Steamed antigen retrieval with citrate buffer pH 6, AP-staining.



EB05750 staining (1.5µg/ml) of Jurkat lysate (RIPA buffer, 35µg total protein per lane). Primary incubated for 1 hour. Detected by western blot using chemiluminescence.