

## UK Office

### Everest Biotech Ltd

Cherwell Innovation Centre  
77 Heyford Park  
Upper Heyford  
Oxfordshire  
OX25 5HD  
UK

Enquiries:

[info@everestbiotech.com](mailto:info@everestbiotech.com)

Sales:

[sales@everestbiotech.com](mailto:sales@everestbiotech.com)

Tech support:

[support@everestbiotech.com](mailto:support@everestbiotech.com)

Tel: +44 (0)1869 238326

[www.everestbiotech.com](http://www.everestbiotech.com)

**Research Use Only. Not for  
diagnostic or therapeutic use.**

## EB09292 - Goat Anti-HIPPI Antibody

Size: 100µg specific antibody in 200µl



### Target Protein

**Principal Names:** IFT57, intraflagellar transport 57 homolog (Chlamydomonas), ESRRBL1, FLJ10147, HIPPI, MHS4R2, HIP1 protein interactor, estrogen-related receptor beta like 1, huntingtin interacting protein-1 interacting protein

**Official Symbol:** IFT57

**Accession Number(s):** NP\_060480.1

**Human GeneID(s):** [55081](#)

**Non-Human GeneID(s):** 73916 (mouse), 303968 (rat)

### Immunogen

Peptide with sequence C-EQPQEYDDPNATISN , from the internal region of the protein sequence according to NP\_060480.1.

Please note the [peptide](#) is available for sale.

### Purification and Storage

Purified from goat serum by ammonium sulphate precipitation followed by antigen affinity chromatography using the immunizing peptide.

Supplied at 0.5 mg/ml in Tris saline, 0.02% sodium azide, pH7.3 with 0.5% bovine serum albumin.

Aliquot and store at -20°C. Minimize freezing and thawing.

### Applications Tested

**Peptide ELISA:** antibody detection limit dilution 1:8000.

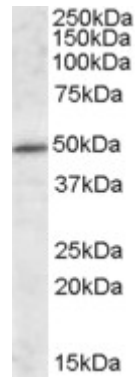
**Western blot:** Approx 49kDa band observed in Human and Mouse Brain lysates (calculated MW of 49.1kDa according to Human NP\_060480.1 and of 48.8kDa according to Mouse NP\_082956.2). Recommended concentration: 1-3µg/ml.

**IHC:** Paraffin embedded Human Testis. Recommended concentration: 5µg/ml.

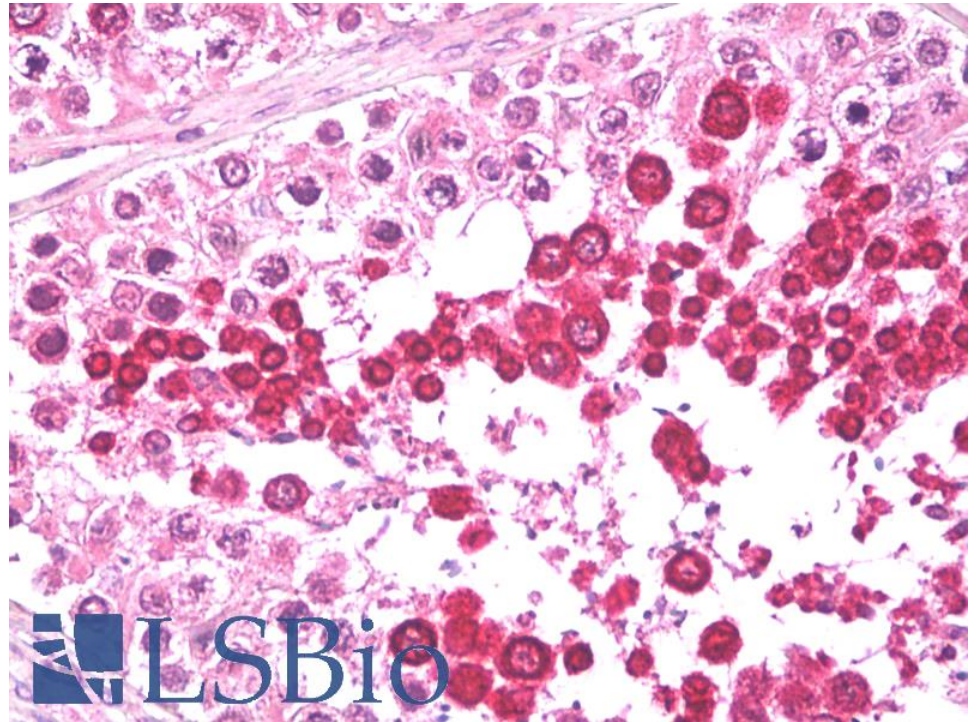
### Species Reactivity

**Tested:** Human, Mouse

**Expected from sequence similarity:** Human, Mouse, Rat, Cow



EB09292 (1 $\mu$ g/ml) staining of Mouse Brain lysate (35 $\mu$ g protein in RIPA buffer). Primary incubation was 1 hour.  
Detected by chemiluminescence.



EB09292 (5 $\mu$ g/ml) staining of paraffin embedded Human Testes. Steamed antigen retrieval with citrate buffer pH 6, AP-staining.