



UK Office

Everest Biotech Ltd

Cherwell Innovation Centre
77 Heyford Park
Upper Heyford
Oxfordshire
OX25 5HD
UK

Enquiries:

info@everestbiotech.com

Sales:

sales@everestbiotech.com

Tech support:

support@everestbiotech.com

Tel: +44 (0)1869 238326

www.everestbiotech.com

**Research Use Only. Not for
diagnostic or therapeutic use.**

EB10420 - Goat Anti-HLA-DQA2 Antibody

Size: 100µg specific antibody in 200µl



Target Protein

Principal Names:

Official Symbol: HLA-DQA2

Accession Number(s): NP_064440.1

Human GeneID(s): [3118](#)

Immunogen

Peptide with sequence C-QSHGPSGQYTH, from the internal region of the protein sequence according to NP_064440.1.

Please note the [peptide](#) is available for sale.

Purification and Storage

Purified from goat serum by ammonium sulphate precipitation followed by antigen affinity chromatography using the immunizing peptide.

Supplied at 0.5 mg/ml in Tris saline, 0.02% sodium azide, pH7.3 with 0.5% bovine serum albumin.

Aliquot and store at -20°C. Minimize freezing and thawing.

Applications Tested

Peptide ELISA: antibody detection limit dilution 1:16000.

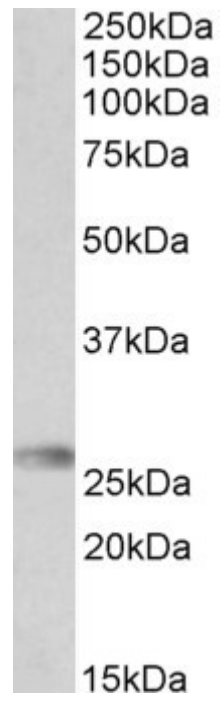
Western blot: Approx 26kDa band observed in Human Bone Marrow lysates (calculated MW of 28.0kDa according to NP_064440.1). Recommended concentration: 0.1-0.3 µg/ml. Primary incubation was 1 hour.

IHC: Paraffin embedded Human Spleen. Recommended concentration: 3.75µg/ml.

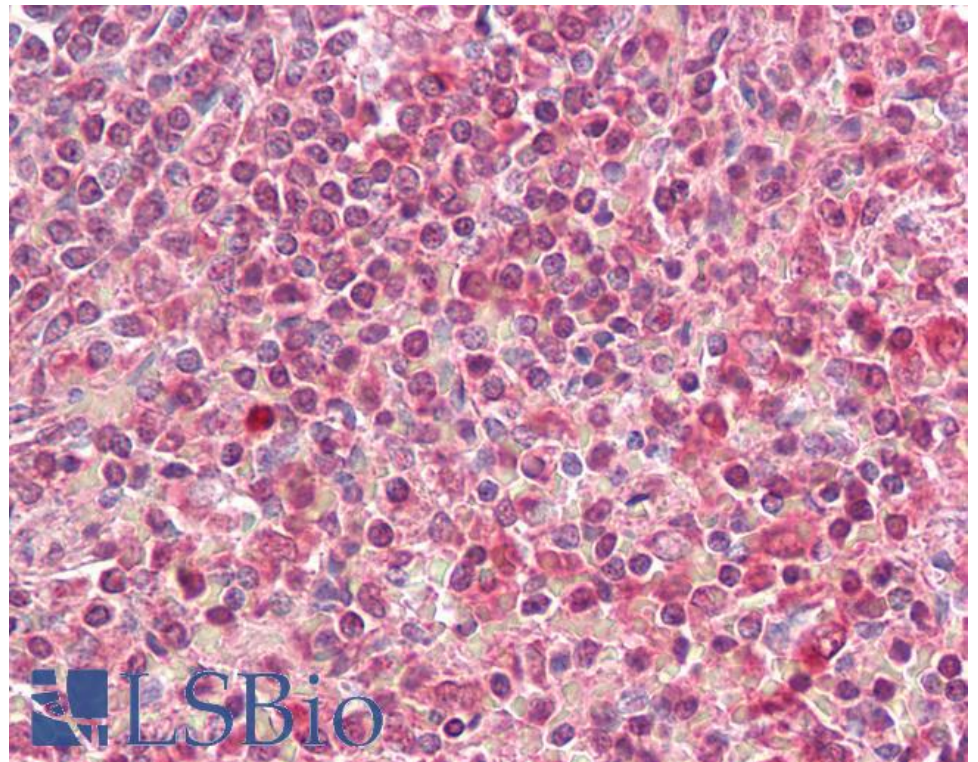
Species Reactivity

Tested: Human

Expected from sequence similarity: Human



EB10420 (0.3 μ g/ml) staining of Human Bone Marrow lysate (35 μ g protein in RIPA buffer). Detected by chemiluminescence.



EB10420 (3.75 μ g/ml) staining of paraffin embedded Human Spleen. Steamed antigen retrieval with citrate buffer Ph 6, AP-staining.