



UK Office

Everest Biotech Ltd

Cherwell Innovation Centre
77 Heyford Park
Upper Heyford
Oxfordshire
OX25 5HD
UK

Enquiries:

info@everestbiotech.com

Sales:

sales@everestbiotech.com

Tech support:

support@everestbiotech.com

Tel: +44 (0)1869 238326

www.everestbiotech.com

**Research Use Only. Not for
diagnostic or therapeutic use.**

EB10419 - Goat Anti-HLA-DQA2 & HLA-DQA1 Antibody

Size: 100µg specific antibody in 200µl



Target Protein

Principal Names: HLA-DXA, major histocompatibility complex, class II, DQ alpha 2, HLA-DQA2, HLA class II histocompatibility antigen, DQ alpha 2 chain, DX alpha chain, HLA class II histocompatibility antigen, DQ(6) alpha chain, HLA-DQA1, MHC class II DQA2, HLA-DXA, major histocompatibility complex, class II, DQ alpha 2, HLA-DQA2, HLA class II histocompatibility antigen, DQ alpha 2 chain, DX alpha chain, HLA class II histocompatibility antigen, DQ(6) alpha chain, HLA-DQA1, MHC class II DQA2

Official Symbol: HLA-DQA2

Accession Number(s): NP_064440.1; NP_002113.2

Human GeneID(s): [3118](#), [3117](#)

Important Comments: This antibody is expected to recognize: NP_064440.1 (HLA-DQA2; GeneID: 3118) and also the very similar NP_002113.2 (HLA-DQA1; GeneID:3117).

Immunogen

Peptide with sequence C-QGLRSVGASRH, from the C Terminus of the protein sequence according to NP_064440.1; NP_002113.2.

Please note the [peptide](#) is available for sale.

Purification and Storage

Purified from goat serum by ammonium sulphate precipitation followed by antigen affinity chromatography using the immunizing peptide.

Supplied at 0.5 mg/ml in Tris saline, 0.02% sodium azide, pH7.3 with 0.5% bovine serum albumin.

Aliquot and store at -20°C. Minimize freezing and thawing.

Applications Tested

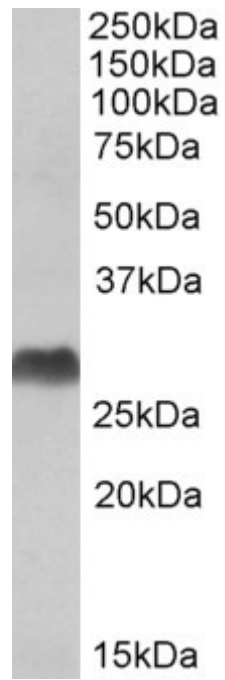
Peptide ELISA: antibody detection limit dilution 1:32000.

Western blot: Approx 28kDa band observed in Human Bone Marrow lysates (calculated MW of 28.0kDa according to NP_064440.1). Recommended concentration: 1-3µg/ml.

Species Reactivity

Tested: Human

Expected from sequence similarity: Human



EB10419 (1 μ g/ml) staining of Human Bone Marrow lysate (35 μ g protein in RIPA buffer). Primary incubation was 1 hour. Detected by chemiluminescence.