



UK Office

Everest Biotech Ltd

Cherwell Innovation Centre
77 Heyford Park
Upper Heyford
Oxfordshire
OX25 5HD
UK

Enquiries:

info@everestbiotech.com

Sales:

sales@everestbiotech.com

Tech support:

support@everestbiotech.com

Tel: +44 (0)1869 238326

Fax: +44 (0)1869 238327

US Office

Everest Biotech c/o Abcore

405 Maple Street, Suite A106
Ramona,
CA 92065
USA

Inquiries:

info@everestbiotech.com

Sales:

usasales@everestbiotech.com

Tech support:

support@everestbiotech.com

Tel: 888-320-4628 (toll-free)

Fax: 888-841-9041

www.everestbiotech.com

**Research Use Only. Not for
diagnostic or therapeutic use.**

EB12830 - Goat Anti-HMBS (aa160-173) Antibody

Size: 100µg specific antibody in 200µl



Target Protein

Principal Names: HMBS, hydroxymethylbilane synthase, PBG-D, PBGD, PORC, UPS, porphobilinogen deaminase, porphyria, acute, Chester type, pre-uroporphyrinogen synthase, uroporphyrinogen I synthase, uroporphyrinogen I synthetase

Official Symbol: HMBS

Accession Number(s): NP_000181.2; NP_001019553.1; NP_001245137.1; NP_001245138.1

Human GeneID(s): [3145](#)

Important Comments: This antibody is expected to recognize all reported isoforms (NP_000181.2; NP_001019553.1; NP_001245137.1; NP_001245138.1).

Immunogen

Peptide with sequence C-HLEFRSIRGNLNTR, from the internal region of the protein sequence according to NP_000181.2; NP_001019553.1; NP_001245137.1; NP_001245138.1.

Please note the [peptide](#) is available for sale.

Purification and Storage

Purified from goat serum by ammonium sulphate precipitation followed by antigen affinity chromatography using the immunizing peptide.

Supplied at 0.5 mg/ml in Tris saline, 0.02% sodium azide, pH7.3 with 0.5% bovine serum albumin.

Aliquot and store at -20°C. Minimize freezing and thawing.

Applications Tested

Peptide ELISA: antibody detection limit dilution 1:32000.

Western blot: Approx 40kDa band observed in lysates of cell line K562 (calculated MW of 39.3kDa according to NP_000181.2). Recommended concentration: 0.1-0.3µg/ml.

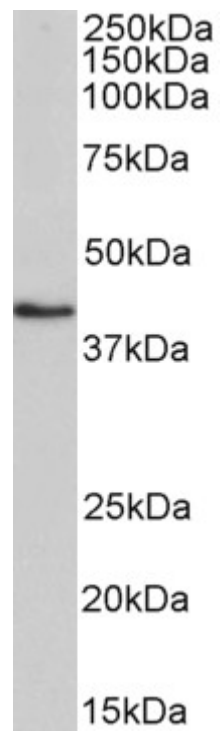
Primary incubation was 1 hour.

IHC: Paraffin embedded Human Spleen. Recommended concentration: 5µg/ml.

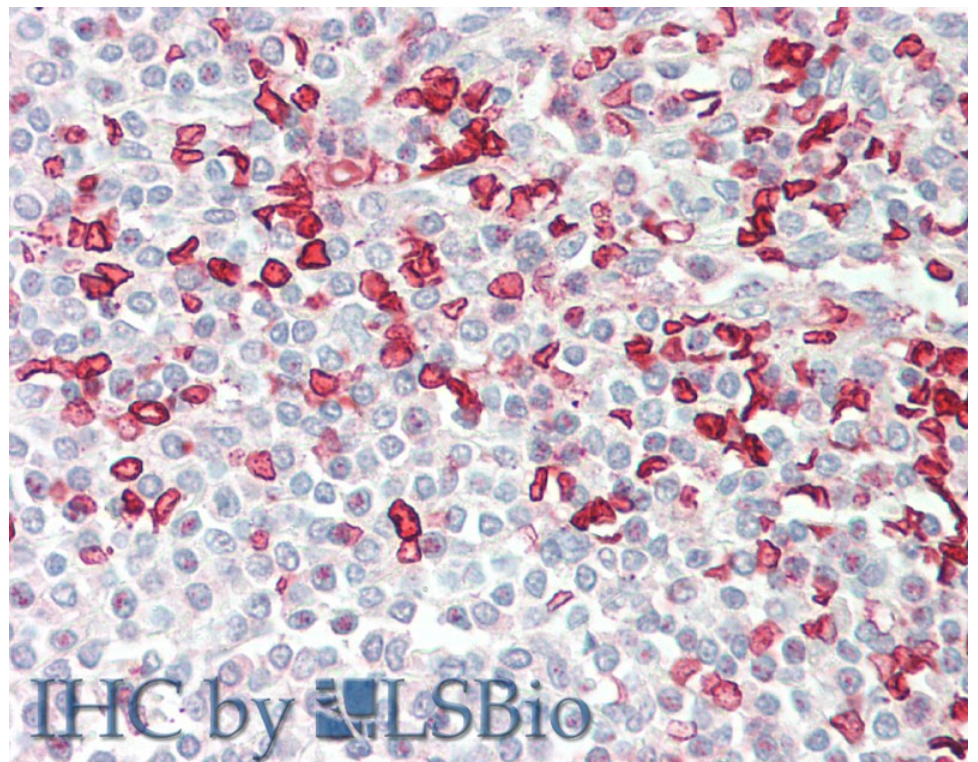
Species Reactivity

Tested: Human

Expected from sequence similarity: Human



EB12830 (0.1µg/ml) staining of K562 lysate (35µg protein in RIPA buffer). Detected by chemiluminescence.



EB12830 (5µg/ml) staining of paraffin embedded Human Spleen. Steamed antigen retrieval with citrate buffer pH 6, AP-staining.