



## UK Office

### Everest Biotech Ltd

Cherwell Innovation Centre  
77 Heyford Park  
Upper Heyford  
Oxfordshire  
OX25 5HD  
UK

Enquiries:

[info@everestbiotech.com](mailto:info@everestbiotech.com)

Sales:

[sales@everestbiotech.com](mailto:sales@everestbiotech.com)

Tech support:

[support@everestbiotech.com](mailto:support@everestbiotech.com)

Tel: +44 (0)1869 238326

Fax: +44 (0)1869 238327

## US Office

### Everest Biotech c/o Abcore

405 Maple Street, Suite A106  
Ramona,  
CA 92065  
USA

Inquiries:

[info@everestbiotech.com](mailto:info@everestbiotech.com)

Sales:

[usasales@everestbiotech.com](mailto:usasales@everestbiotech.com)

Tech support:

[support@everestbiotech.com](mailto:support@everestbiotech.com)

Tel: 888-320-4628 (toll-free)

Fax: 888-841-9041

[www.everestbiotech.com](http://www.everestbiotech.com)

**Research Use Only. Not for  
diagnostic or therapeutic use.**

## EB05594 - Goat Anti-HMG20A Antibody

Size: 100µg specific antibody in 200µl



### Target Protein

**Principal Names:** HMG20A, high-mobility group 20A, FLJ10739, HMGX1, HMGXB1, HMG box domain containing 1

**Official Symbol:** HMG20A

**Accession Number(s):** NP\_060670.1

**Human GeneID(s):** [10363](#)

**Non-Human GeneID(s):** 66867 (mouse)

### Immunogen

Peptide with sequence C-ATVREVVNRLDR, from the C Terminus of the protein sequence according to NP\_060670.1.

Please note the [peptide](#) is available for sale.

### Purification and Storage

Purified from goat serum by ammonium sulphate precipitation followed by antigen affinity chromatography using the immunizing peptide.

Supplied at 0.5 mg/ml in Tris saline, 0.02% sodium azide, pH7.3 with 0.5% bovine serum albumin.

Aliquot and store at -20°C. Minimize freezing and thawing.

### Applications Tested

**Peptide ELISA:** antibody detection limit dilution 1:32000.

**Western blot:** This antibody has been successfully used in Rat Brain as described in the following paper: Artegiani et al, J Biol Chem. 2010 Aug 6;285(32):24740-50.; PMID: 20530487.

**IHC:** In paraffin embedded Human Spleen shows staining of nucleoli. Recommended concentration: 1-2µg/ml.

**Additional validation:** This antibody has been successfully used in the following paper: Sikorski et al. (2018) PMID: 30377371.

### Species Reactivity

**Tested:** Human, Rat

**Expected from sequence similarity:** Human, Mouse, Rat, Dog, Pig, Cow

### Specific References

**This antibody has been successfully used in the following paper:**

Krzysztof Sikorski, Adi Mehta, Marit Inngjerdn, Flourina Thakor, Simon Kling, Tomas Kalina, Tuula A. Nyman, Maria Ekman Stensland, Wei Zhou, Gustavo A. De Souza, Lars Holden, Jan Stuchly, Markus Templin and Fridtjof Lund-Johansen

A high-throughput pipeline for validation of antibodies

Nat Methods. 2018 Nov;15(11):909-912

PMID: 30377371

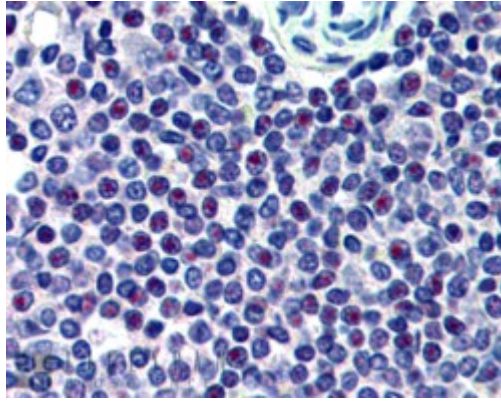
**This antibody has been successfully used in WB on Rat:**

Artegiani B, Labbaye C, Sferra A, Quaranta MT, Torrer P, Macchia G, Ceccarini M, Petrucci TC, Macioce P

The interaction with HMG20a/b proteins suggests a potential role for beta-dystrobrevin in neuronal differentiation.

J Biol Chem. 2010 Aug 6;285(32):24740-50.





EB05594 (2.5µg/ml) staining of paraffin embedded Human Spleen. Steamed antigen retrieval with citrate buffer pH 6, AP-staining.