



UK Office

Everest Biotech Ltd

Cherwell Innovation Centre
77 Heyford Park
Upper Heyford
Oxfordshire
OX25 5HD
UK

Enquiries:

info@everestbiotech.com

Sales:

sales@everestbiotech.com

Tech support:

support@everestbiotech.com

Tel: +44 (0)1869 238326

Fax: +44 (0)1869 238327

US Office

Everest Biotech c/o Abcore

405 Maple Street, Suite A106
Ramona,
CA 92065
USA

Inquiries:

info@everestbiotech.com

Sales:

usasales@everestbiotech.com

Tech support:

support@everestbiotech.com

Tel: 888-320-4628 (toll-free)

Fax: 888-841-9041

www.everestbiotech.com

**Research Use Only. Not for
diagnostic or therapeutic use.**

EB09567 - Goat Anti-HMGA1 (aa9-21) Antibody

Size: 100µg specific antibody in 200µl



Target Protein

Principal Names: HMGA1, high mobility group AT-hook 1, HMG-R, HMGA1A, HMGIY, MGC12816, MGC4242, MGC4854, OTTHUMP00000016222, OTTHUMP00000016223, OTTHUMP00000016224, OTTHUMP00000039618, high-mobility group (nonhistone chromosomal) protein isoforms I and Y, nonhistone chromosomal high-mobility group protein HMG-I/HMG-Y

Official Symbol: HMGA1

Accession Number(s): NP_665906.1; NP_002122.1

Human GeneID(s): [3159](#)

Non-Human GeneID(s): 15361 (mouse), 117062 (rat)

Important Comments: This antibody is expected to recognize reported isoforms a (NP_665906.1, NP_665908.1, NP_665911.1) and b (NP_002122.1, NP_665910.1, NP_665912.1). This antibody is not expected to cross-react with HMGA2.

Immunogen

Peptide with sequence C-SQPLASKQEKDGT, from the internal region (near N Terminus) of the protein sequence according to NP_665906.1; NP_002122.1.

Please note the [peptide](#) is available for sale.

Purification and Storage

Purified from goat serum by ammonium sulphate precipitation followed by antigen affinity chromatography using the immunizing peptide.

Supplied at 0.5 mg/ml in Tris saline, 0.02% sodium azide, pH7.3 with 0.5% bovine serum albumin.

Aliquot and store at -20°C. Minimize freezing and thawing.

Applications Tested

Peptide ELISA: antibody detection limit dilution 1:16000.

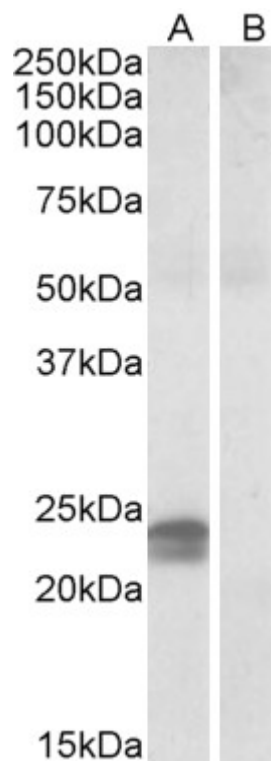
Western blot: Approx 24kDa band observed in Human Pancreas (calculated MW of 11.7kDa/10.7kDa according to NP_665906.1; NP_002122.1). This molecular weight is routinely observed by other sources. This band was successfully blocked by incubation with the immunizing peptide. Recommended concentration: 0.5-1µg/ml. Primary incubation was 1 hour.

IHC: Paraffin embedded Human Skin and Placenta. Recommended concentration: 3.75µg/ml.

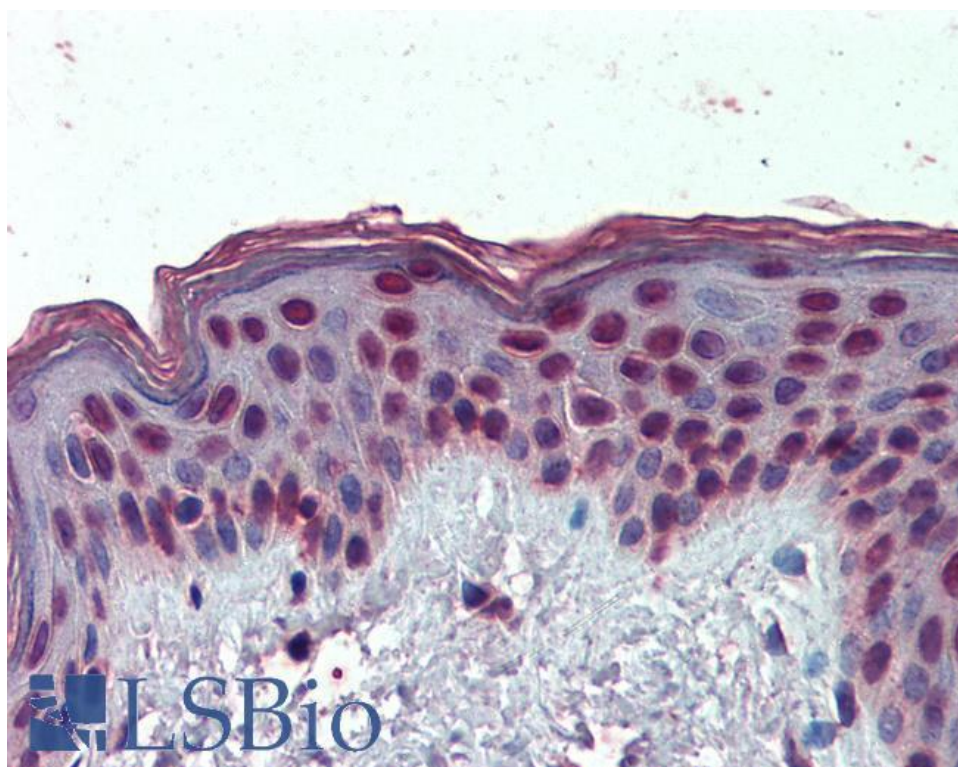
Species Reactivity

Tested: Human

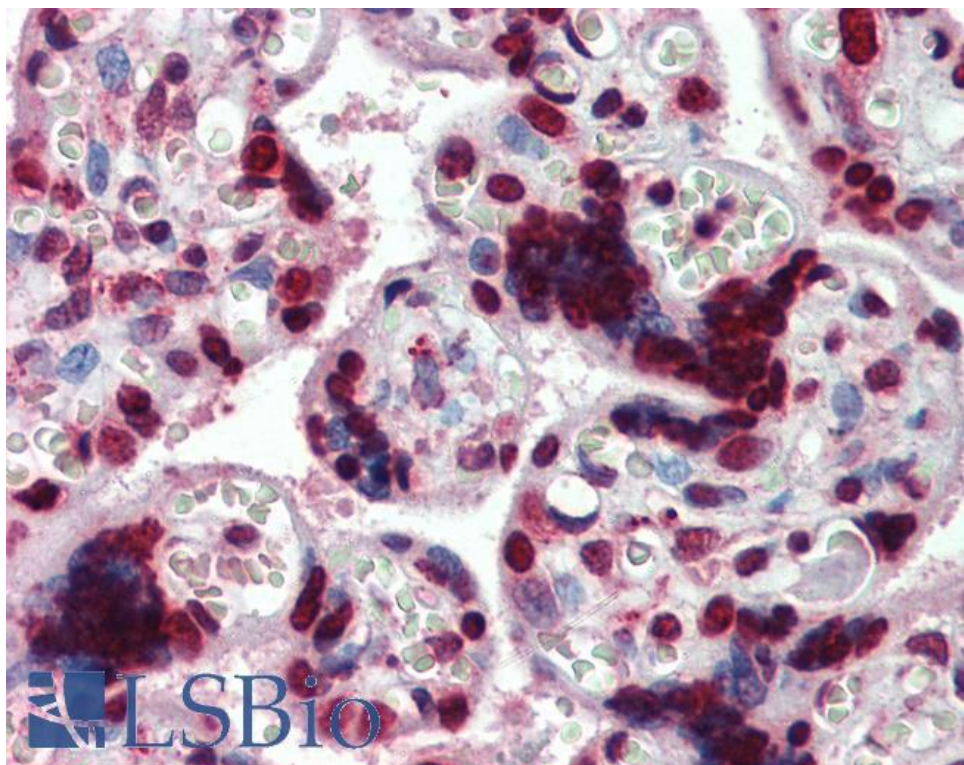
Expected from sequence similarity: Human, Mouse, Rat, Dog, Cow, Pig



EB09567 (0.5µg/ml) staining of Human Pancreas lysate (35µg protein in RIPA buffer) with (B) and without (A) blocking with the immunising peptide. Detected by chemiluminescence.



EB09567 (3.75µg/ml) staining of paraffin embedded Human Skin. Steamed antigen retrieval with citrate buffer pH 6, AP-staining.



EB09567 (3.75µg/ml) staining of paraffin embedded Human Placenta. Steamed antigen retrieval with citrate buffer pH 6, AP-staining.