



UK Office

Everest Biotech Ltd

Cherwell Innovation Centre
77 Heyford Park
Upper Heyford
Oxfordshire
OX25 5HD
UK

Enquiries:

info@everestbiotech.com

Sales:

sales@everestbiotech.com

Tech support:

support@everestbiotech.com

Tel: +44 (0)1869 238326

Fax: +44 (0)1869 238327

US Office

Everest Biotech c/o Abcore

405 Maple Street, Suite A106
Ramona,
CA 92065
USA

Inquiries:

info@everestbiotech.com

Sales:

usasales@everestbiotech.com

Tech support:

support@everestbiotech.com

Tel: 888-320-4628 (toll-free)

Fax: 888-841-9041

www.everestbiotech.com

**Research Use Only. Not for
diagnostic or therapeutic use.**

EB12867 - Goat Anti-HMGCS1 Antibody

Size: 100µg specific antibody in 200µl



Target Protein

Principal Names: HMGCS1, 3-hydroxy-3-methylglutaryl-CoA synthase 1 (soluble), HMGCS, 3-hydroxy-3-methylglutaryl coenzyme A (HMG-CoA) synthase, 3-hydroxy-3-methylglutaryl-Coenzyme A synthase 1 (soluble), hydroxymethylglutaryl-CoA synthase, cytoplasmic

Official Symbol: HMGCS1

Accession Number(s): NP_002121.4

Human GeneID(s): [3157](#)

Important Comments: Reported variants represent identical protein: NP_002121.4, NP_001091742.1.

Immunogen

Peptide with sequence ERNNLSYDCIGRLE, from the internal region of the protein sequence according to NP_002121.4.

Please note the [peptide](#) is available for sale.

Purification and Storage

Purified from goat serum by ammonium sulphate precipitation followed by antigen affinity chromatography using the immunizing peptide.

Supplied at 0.5 mg/ml in Tris saline, 0.02% sodium azide, pH7.3 with 0.5% bovine serum albumin.

Aliquot and store at -20°C. Minimize freezing and thawing.

Applications Tested

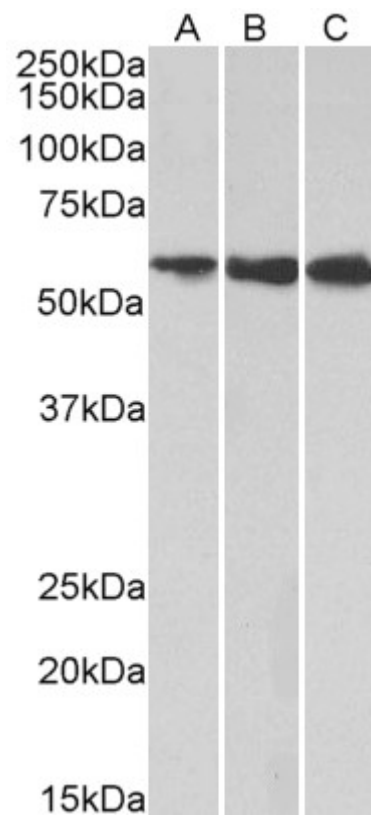
Peptide ELISA: antibody detection limit dilution 1:128000.

Western blot: Approx 57kDa band observed in lysates of cell lines HeLa, HepG2, and K562 (calculated MW of 57.3kDa according to NP_002121.4). Recommended concentration: 1-3µg/ml.

Species Reactivity

Tested: Human

Expected from sequence similarity: Human



EB12867 (1 μ g/ml) staining of HeLa (A), HepG2 (B) and K562 (C) lysates (35 μ g protein in RIPA buffer). Primary incubation was 1 hour. Detected by chemiluminescence.