



UK Office

Everest Biotech Ltd

Cherwell Innovation Centre
77 Heyford Park
Upper Heyford
Oxfordshire
OX25 5HD
UK

Enquiries:

info@everestbiotech.com

Sales:

sales@everestbiotech.com

Tech support:

support@everestbiotech.com

Tel: +44 (0)1869 238326

Fax: +44 (0)1869 238327

US Office

Everest Biotech c/o Abcore

405 Maple Street, Suite A106
Ramona,
CA 92065
USA

Inquiries:

info@everestbiotech.com

Sales:

usasales@everestbiotech.com

Tech support:

support@everestbiotech.com

Tel: 888-320-4628 (toll-free)

Fax: 888-841-9041

www.everestbiotech.com

**Research Use Only. Not for
diagnostic or therapeutic use.**

EB11350 - Goat Anti-HMHA1 (aa57-71) Antibody

Size: 100µg specific antibody in 200µl



Target Protein

Principal Names: HA-1, histocompatibility (minor) HA-1, HLA-HA1, KIAA0223, minor histocompatibility antigen HA-1, minor histocompatibility protein HA-1, HMHA1

Official Symbol: ARHGAP45

Accession Number(s): NP_036424.2

Human GeneID(s): [23526](#)

Non-Human GeneID(s): 70719 (mouse), 314618 (rat)

Important Comments: To avoid confusion please note that this antibody is designed to recognise the whole protein as coded by NP_036424.2 and won't recognise the peptide found eluted from HLA-A*0201 molecules by den Haan et al (Science. 1998 Feb 13;279(5353):1054-7, PMID: 9461441)

Immunogen

Peptide with sequence KATGTLKRPTSLSRH-C, from the N Terminus of the protein sequence according to NP_036424.2.

Please note the [peptide](#) is available for sale.

Purification and Storage

Purified from goat serum by ammonium sulphate precipitation followed by antigen affinity chromatography using the immunizing peptide.

Supplied at 0.5 mg/ml in Tris saline, 0.02% sodium azide, pH7.3 with 0.5% bovine serum albumin.

Aliquot and store at -20°C. Minimize freezing and thawing.

Applications Tested

Peptide ELISA: antibody detection limit dilution 1:128000.

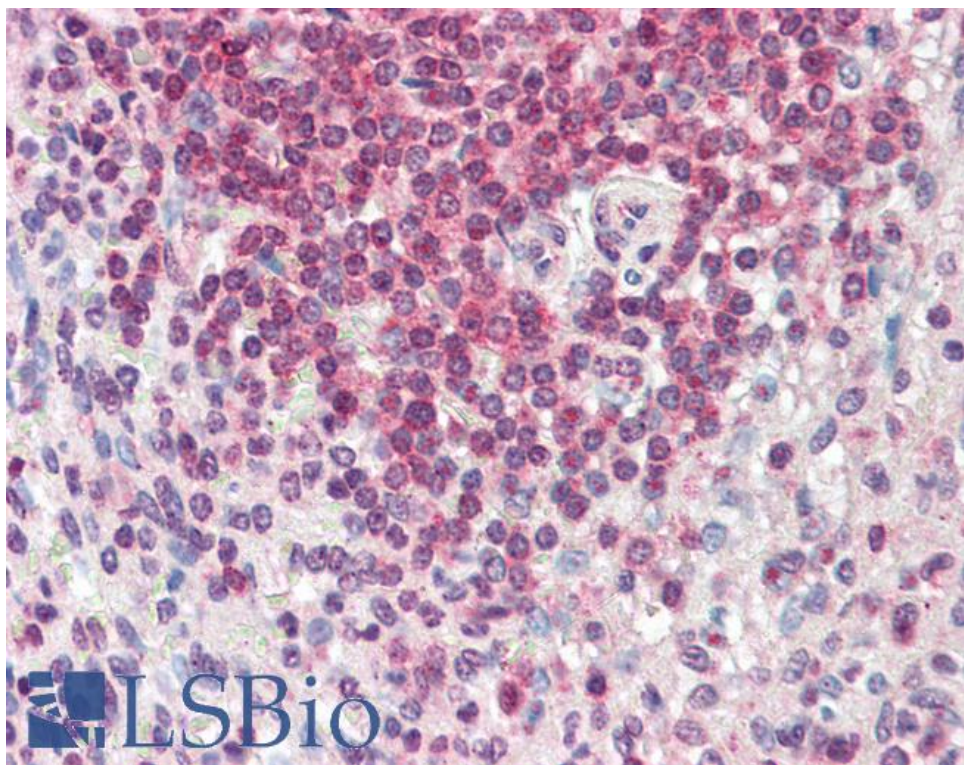
Western blot: Preliminary experiments gave an approx 200kDa band in lysates of cell lines Jurkat and Molt4 after 0.05µg/ml antibody staining. Please note that currently we cannot find an explanation in the literature for the band we observe given the calculated size of 125kDa according to NP_036424.2. The 200kDa band was successfully blocked by incubation with the immunizing peptide.

IHC: Paraffin embedded Human Spleen. Recommended concentration: 5µg/ml.

Species Reactivity

Tested: Human

Expected from sequence similarity: Human, Mouse, Rat, Cow



EB11350 (5µg/ml) staining of paraffin embedded Human Spleen. Steamed antigen retrieval with citrate buffer pH 6, AP-staining.