



## UK Office

### Everest Biotech Ltd

Cherwell Innovation Centre  
77 Heyford Park  
Upper Heyford  
Oxfordshire  
OX25 5HD  
UK

Enquiries:

[info@everestbiotech.com](mailto:info@everestbiotech.com)

Sales:

[sales@everestbiotech.com](mailto:sales@everestbiotech.com)

Tech support:

[support@everestbiotech.com](mailto:support@everestbiotech.com)

Tel: +44 (0)1869 238326

Fax: +44 (0)1869 238327

## US Office

### Everest Biotech c/o Abcore

405 Maple Street, Suite A106  
Ramona,  
CA 92065  
USA

Inquiries:

[info@everestbiotech.com](mailto:info@everestbiotech.com)

Sales:

[usasales@everestbiotech.com](mailto:usasales@everestbiotech.com)

Tech support:

[support@everestbiotech.com](mailto:support@everestbiotech.com)

Tel: 888-320-4628 (toll-free)

Fax: 888-841-9041

[www.everestbiotech.com](http://www.everestbiotech.com)

**Research Use Only. Not for  
diagnostic or therapeutic use.**

## EB09483 - Goat Anti-HMOX2 Antibody

Size: 100µg specific antibody in 200µl



### Target Protein

**Principal Names:** HMOX2, heme oxygenase (decycling) 2, HO-2, heme oxygenase (decycling) 2

**Official Symbol:** HMOX2

**Accession Number(s):** NP\_002125.3

**Human GeneID(s):** [3163](#)

**Non-Human GeneID(s):** 15369 (mouse)

**Important Comments:** Reported variants represent identical protein: NP\_002125.3, NP\_001120676.1, NP\_001120678.1, NP\_001120677.1

### Immunogen

Peptide with sequence C-DQAGSTLARETLED, from the internal region of the protein sequence according to NP\_002125.3.

Please note the [peptide](#) is available for sale.

### Purification and Storage

Purified from goat serum by ammonium sulphate precipitation followed by antigen affinity chromatography using the immunizing peptide.

Supplied at 0.5 mg/ml in Tris saline, 0.02% sodium azide, pH7.3 with 0.5% bovine serum albumin.

Aliquot and store at -20°C. Minimize freezing and thawing.

### Applications Tested

**Peptide ELISA:** antibody detection limit dilution 1:32000.

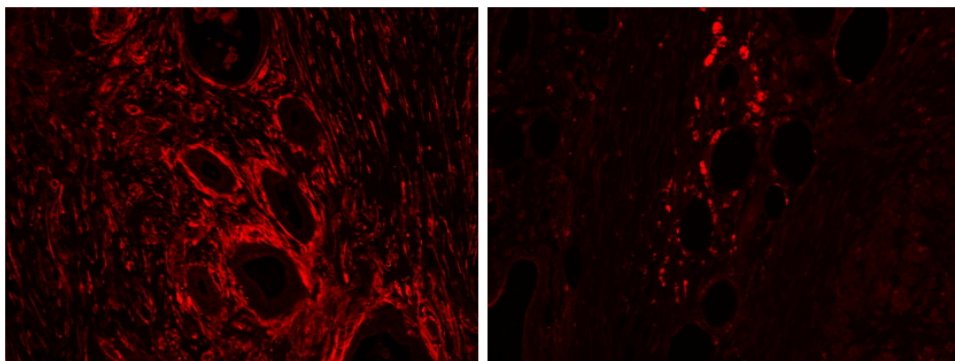
**Western blot:** Approx 37kDa band observed in lysates of cell line K562 (calculated MW of 36.0kDa according to NP\_002125.3). Recommended concentration: 0.3-1µg/ml.

**IHC:** In paraffin embedded Human Pancreas cancer shows increased staining of invading cancer cells. Recommended concentration, 2-4µg/ml.

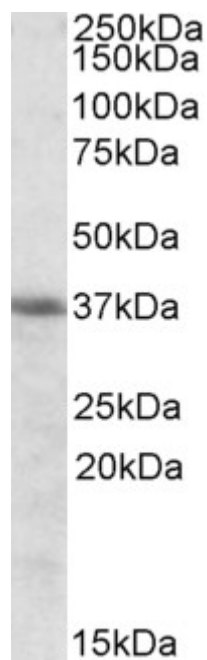
### Species Reactivity

**Tested:** Human

**Expected from sequence similarity:** Human, Mouse, Cow



EB09483 (2 $\mu$ g/ml) staining of paraffin embedded Human Pancreas: cancer (left), adjacent to cancer (right).  
Steamed antigen retrieval with citrate buffer pH 6, Alexa594-staining.



EB09483 (0.3 $\mu$ g/ml) staining of K562 cell lysate (35 $\mu$ g protein in RIPA buffer). Primary incubation was 1 hour.  
Detected by chemiluminescence.