



## UK Office

### Everest Biotech Ltd

Cherwell Innovation Centre  
77 Heyford Park  
Upper Heyford  
Oxfordshire  
OX25 5HD  
UK

Enquiries:

[info@everestbiotech.com](mailto:info@everestbiotech.com)

Sales:

[sales@everestbiotech.com](mailto:sales@everestbiotech.com)

Tech support:

[support@everestbiotech.com](mailto:support@everestbiotech.com)

Tel: +44 (0)1869 238326

Fax: +44 (0)1869 238327

## US Office

### Everest Biotech c/o Abcore

405 Maple Street, Suite A106  
Ramona,  
CA 92065  
USA

Inquiries:

[info@everestbiotech.com](mailto:info@everestbiotech.com)

Sales:

[usasales@everestbiotech.com](mailto:usasales@everestbiotech.com)

Tech support:

[support@everestbiotech.com](mailto:support@everestbiotech.com)

Tel: 888-320-4628 (toll-free)

Fax: 888-841-9041

[www.everestbiotech.com](http://www.everestbiotech.com)

**Research Use Only. Not for  
diagnostic or therapeutic use.**

## EB06700 - Goat Anti-HNF4A Antibody

Size: 100µg specific antibody in 200µl



### Target Protein

**Principal Names:** HNF4A, TCF, HNF4, NR2A1, TCF14, HNF4a7, HNF4a8, HNF4a9, NR2A21, hepatocyte nuclear factor 4, alpha, HNF4-alpha, transcription factor-14, FLJ39654, HNF4alpha, MODY, MODY1, HNF4alpha10/11/12

**Official Symbol:** HNF4A

**Accession Number(s):** NP\_849180.1; NP\_000448.3; NP\_849181.1

**Human GeneID(s):** [3172](#)

**Important Comments:** This antibody is expected to recognise the reported isoforms a, b and c (NP\_849180.1; NP\_000448.3; NP\_849181.1 resp.).

### Immunogen

Peptide with sequence RLSKTLVDMMDY-C, from the N Terminus of the protein sequence according to NP\_849180.1; NP\_000448.3; NP\_849181.1.

Please note the [peptide](#) is available for sale.

### Purification and Storage

Purified from goat serum by ammonium sulphate precipitation followed by antigen affinity chromatography using the immunizing peptide.

Supplied at 0.5 mg/ml in Tris saline, 0.02% sodium azide, pH7.3 with 0.5% bovine serum albumin.

Aliquot and store at -20°C. Minimize freezing and thawing.

### Applications Tested

**Peptide ELISA:** antibody detection limit dilution 1:32000.

**Western blot:** Approx 55kDa and 48kDa bands observed in lysates of cell line HepG2 (calculated MW of 52.8kDa according to Human NP\_000448.3, 46.6kDa according to Human NP\_849181.1). Recommended concentration: 0.1-0.5µg/ml. Primary incubation was 1 hour.

**IHC:** Paraffin embedded Human Small Intestine. Recommended concentration: 2µg/ml.

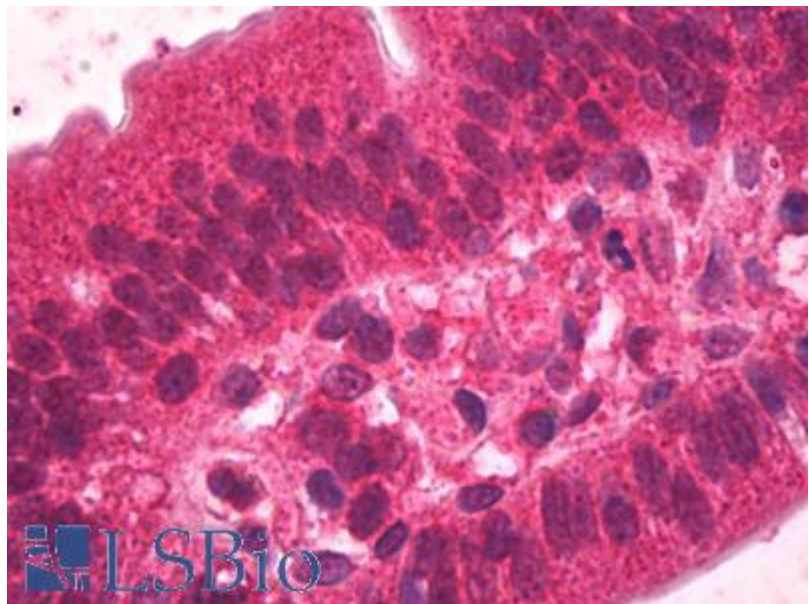
### Species Reactivity

**Tested:** Human

**Expected from sequence similarity:** Human, Dog, Pig



EB06700 (0.1µg/ml) staining of HepG2 lysate (35µg protein in RIPA buffer). Detected by chemiluminescence.



EB06700 (2µg/ml) staining of paraffin embedded Human Small Intestine. Steamed antigen retrieval with citrate buffer pH 6, AP-staining.