



## UK Office

### Everest Biotech Ltd

Cherwell Innovation Centre  
77 Heyford Park  
Upper Heyford  
Oxfordshire  
OX25 5HD  
UK

Enquiries:

[info@everestbiotech.com](mailto:info@everestbiotech.com)

Sales:

[sales@everestbiotech.com](mailto:sales@everestbiotech.com)

Tech support:

[support@everestbiotech.com](mailto:support@everestbiotech.com)

Tel: +44 (0)1869 238326

[www.everestbiotech.com](http://www.everestbiotech.com)

**Research Use Only. Not for  
diagnostic or therapeutic use.**

## EB12200 - Goat Anti-HOXA5 (aa157-168) Antibody

Size: 100µg specific antibody in 200µl



### Target Protein

**Principal Names:** HOXA5, homeobox A5, HOX1, HOX1.3, HOX1C, homeo box 1C, homeo box A5, homeobox protein HOXA5, homeobox protein Hox-1C, homeobox protein Hox-A5

**Official Symbol:** HOXA5

**Accession Number(s):** NP\_061975.2

**Human GeneID(s):** [3202](#)

### Immunogen

Peptide with sequence C-SEQASAQSEPSP, from the internal region of the protein sequence according to NP\_061975.2.

Please note the [peptide](#) is available for sale.

### Purification and Storage

Purified from goat serum by ammonium sulphate precipitation followed by antigen affinity chromatography using the immunizing peptide.

Supplied at 0.5 mg/ml in Tris saline, 0.02% sodium azide, pH7.3 with 0.5% bovine serum albumin.

Aliquot and store at -20°C. Minimize freezing and thawing.

### Applications Tested

**Peptide ELISA:** antibody detection limit dilution 1:2000.

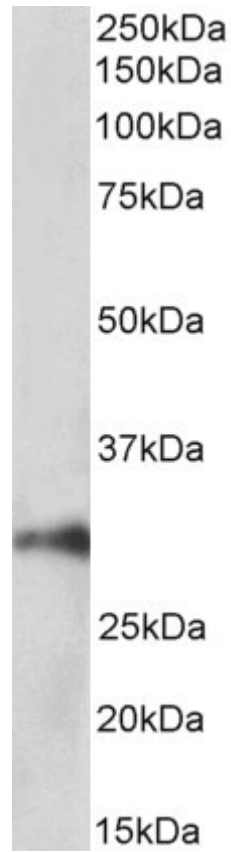
**Western blot:** Approx 30kDa band observed in Pig Kidney lysates (calculated MW of 29.3kDa according to Pig NP\_001182161.1). Recommended concentration: 1-3µg/ml.

**IHC:** Paraffin embedded Human Prostate. Recommended concentration: 5µg/ml.

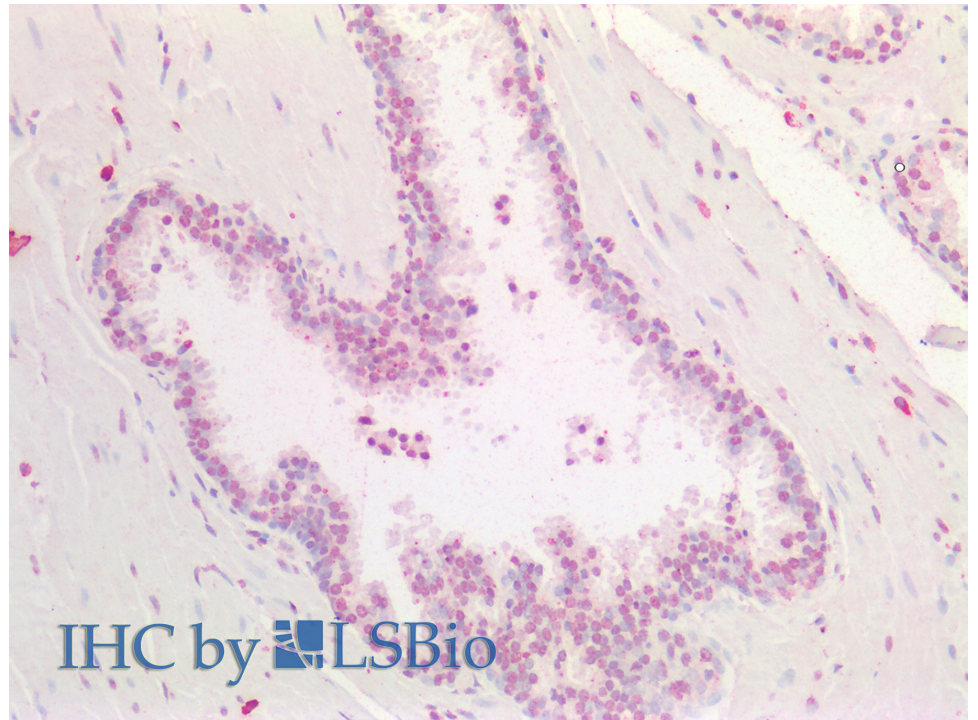
### Species Reactivity

**Tested:** Human, Pig

**Expected from sequence similarity:** Human, Pig, Cow



EB12200 (1 $\mu$ g/ml) staining of Pig Kidney lysate (35 $\mu$ g protein in RIPA buffer). Primary incubation was 1 hour. Detected by chemiluminescence.



EB12200 (5 $\mu$ g/ml) staining of paraffin embedded Human Prostate. Steamed antigen retrieval with citrate buffer pH 6, AP-staining.