

UK Office

Everest Biotech Ltd

Cherwell Innovation Centre
77 Heyford Park
Upper Heyford
Oxfordshire
OX25 5HD
UK

Enquiries:

info@everestbiotech.com

Sales:

sales@everestbiotech.com

Tech support:

support@everestbiotech.com

Tel: +44 (0)1869 238326

www.everestbiotech.com

**Research Use Only. Not for
diagnostic or therapeutic use.**

EB12199 - Goat Anti-HOXA5 (aa83-92) Antibody

Size: 100µg specific antibody in 200µl



Target Protein

Principal Names: HOXA5, homeobox A5, HOX1, HOX1.3, HOX1C, homeo box 1C, homeo box A5, homeobox protein HOXA5, homeobox protein Hox-1C, homeobox protein Hox-A5

Official Symbol: HOXA5

Accession Number(s): NP_061975.2

Human GeneID(s): [3202](#)

Non-Human GeneID(s): 15402 (mouse)

Immunogen

Peptide with sequence C-EPRYSQPATS, from the internal region of the protein sequence according to NP_061975.2.

Please note the [peptide](#) is available for sale.

Purification and Storage

Purified from goat serum by ammonium sulphate precipitation followed by antigen affinity chromatography using the immunizing peptide.

Supplied at 0.5 mg/ml in Tris saline, 0.02% sodium azide, pH7.3 with 0.5% bovine serum albumin.

Aliquot and store at -20°C. Minimize freezing and thawing.

Applications Tested

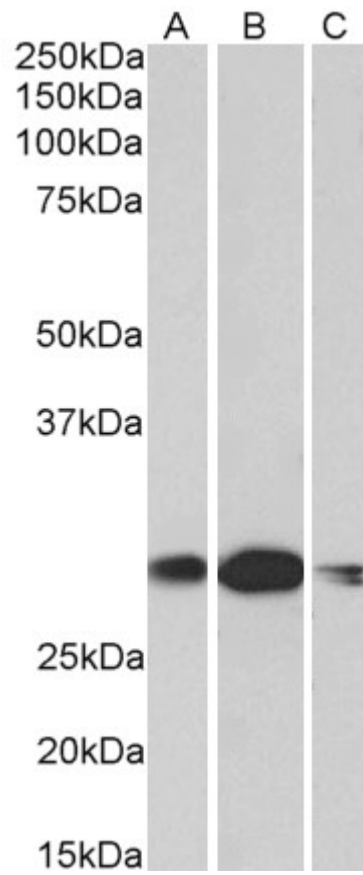
Peptide ELISA: antibody detection limit dilution 1:8000.

Western blot: Approx 28kDa band observed in Human, Mouse, Rat and Pig Kidney lysates (calculated MW of 29.2kDa according to Mouse NP_034583.1). Recommended concentration: 1-3µg/ml.

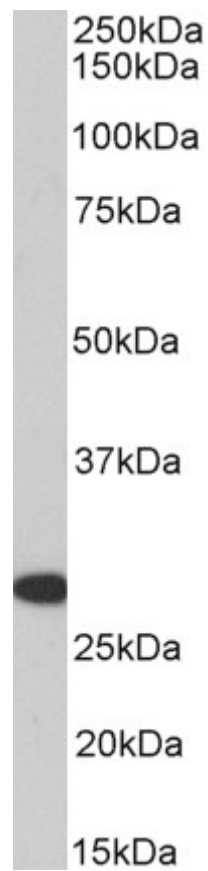
Species Reactivity

Tested: Human, Mouse, Rat, Pig

Expected from sequence similarity: Human, Mouse, Pig, Cow



EB12199 (1 μ g/ml) staining of Human (A), Mouse (B) and rat (C) Kidney lysates (35 μ g protein in RIPA buffer). Primary incubation was 1 hour. Detected by chemiluminescence.



EB12199 (1µg/ml) staining of Pig Kidney lysate (35µg protein in RIPA buffer). Primary incubation was 1 hour.
Detected by chemiluminescence.