

UK Office

Everest Biotech Ltd

Cherwell Innovation Centre
77 Heyford Park
Upper Heyford
Oxfordshire
OX25 5HD
UK

Enquiries:

info@everestbiotech.com

Sales:

sales@everestbiotech.com

Tech support:

support@everestbiotech.com

Tel: +44 (0)1869 238326

www.everestbiotech.com

**Research Use Only. Not for
diagnostic or therapeutic use.**

EB10045 - Goat Anti-HOXA9 (aa49-60) Antibody

Size: 100µg specific antibody in 200µl



Target Protein

Principal Names: ABD-B, homeo box A9, homeobox A9, homeobox protein HOXA9, homeodomain protein HOXA9, HOX1, HOX1.7, HOX1G, MGC1934, HOXA9

Official Symbol: HOXA9

Accession Number(s): NP_689952.1

Human GeneID(s): [3205](#)

Immunogen

Peptide with sequence PDFSPCSFQSKA, from the internal region of the protein sequence according to NP_689952.1.

Please note the [peptide](#) is available for sale.

Purification and Storage

Purified from goat serum by ammonium sulphate precipitation followed by antigen affinity chromatography using the immunizing peptide.

Supplied at 0.5 mg/ml in Tris saline, 0.02% sodium azide, pH7.3 with 0.5% bovine serum albumin.

Aliquot and store at -20°C. Minimize freezing and thawing.

Applications Tested

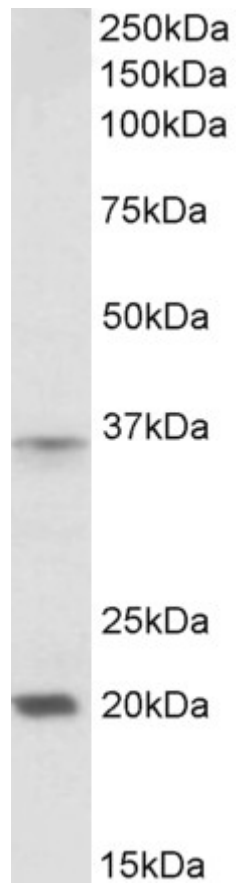
Peptide ELISA: antibody detection limit dilution 1:8000.

Western blot: Approx 36kDa band observed in Mouse Spleen lysates (calculated MW of 29.9kDa according to NP_034586.1). The observed molecular weight corresponds to earlier findings in literature with different antibodies (Quéré et al, Blood. 2011 Jun 2;117(22):5918-30. PMID: 21471525). Recommended concentration: 1-3µg/ml. An additional band of unknown identity was also consistently observed at 20kDa. This band was successfully blocked by incubation with the immunizing peptide. We would appreciate any feedback from people in the field - have any such results been reported with other antibodies/lysates? Have any further splice variants/modified forms been reported?

Species Reactivity

Tested: Mouse

Expected from sequence similarity: Human, Mouse, Rat. Dog. Cow



EB10045 (2 μ g/ml) staining of Mouse Spleen lysate (35 μ g protein in RIPA buffer). Primary incubation was 1 hour. Detected by chemiluminescence.