



UK Office

Everest Biotech Ltd

Cherwell Innovation Centre
77 Heyford Park
Upper Heyford
Oxfordshire
OX25 5HD
UK

Enquiries:

info@everestbiotech.com

Sales:

sales@everestbiotech.com

Tech support:

support@everestbiotech.com

Tel: +44 (0)1869 238326

www.everestbiotech.com

**Research Use Only. Not for
diagnostic or therapeutic use.**

EB12206 - Goat Anti-HOXC10 Antibody

Size: 100µg specific antibody in 200µl



Target Protein

Principal Names: HOXC10, homeobox C10, HOX3l, homeo box C10, homeobox protein Hox-3l, homeobox protein Hox-C10, homeoprotein C10

Official Symbol: HOXC10

Accession Number(s): NP_059105.2

Human GeneID(s): [3226](#)

Immunogen

Peptide with sequence C-EQRASLNPRAEHLE, from the internal region of the protein sequence according to NP_059105.2.

Please note the [peptide](#) is available for sale.

Purification and Storage

Purified from goat serum by ammonium sulphate precipitation followed by antigen affinity chromatography using the immunizing peptide.

Supplied at 0.5 mg/ml in Tris saline, 0.02% sodium azide, pH7.3 with 0.5% bovine serum albumin.

Aliquot and store at -20°C. Minimize freezing and thawing.

Applications Tested

Peptide ELISA: antibody detection limit dilution 1:64000.

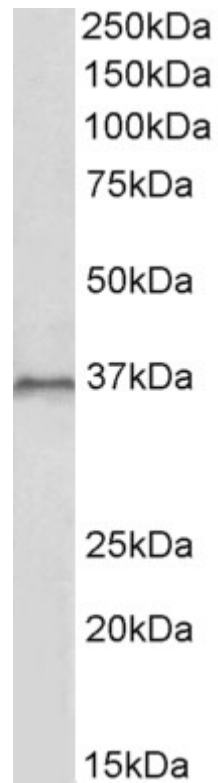
Western blot: Approx 36kDa band observed in lysates of cell line HepG2 (calculated MW of 38.1kDa according to NP_059105.2). Recommended concentration: 1-3µg/ml. Primary incubation was 1 hour.

IHC: Paraffin embedded Human Breast. Recommended concentration: 5µg/ml.

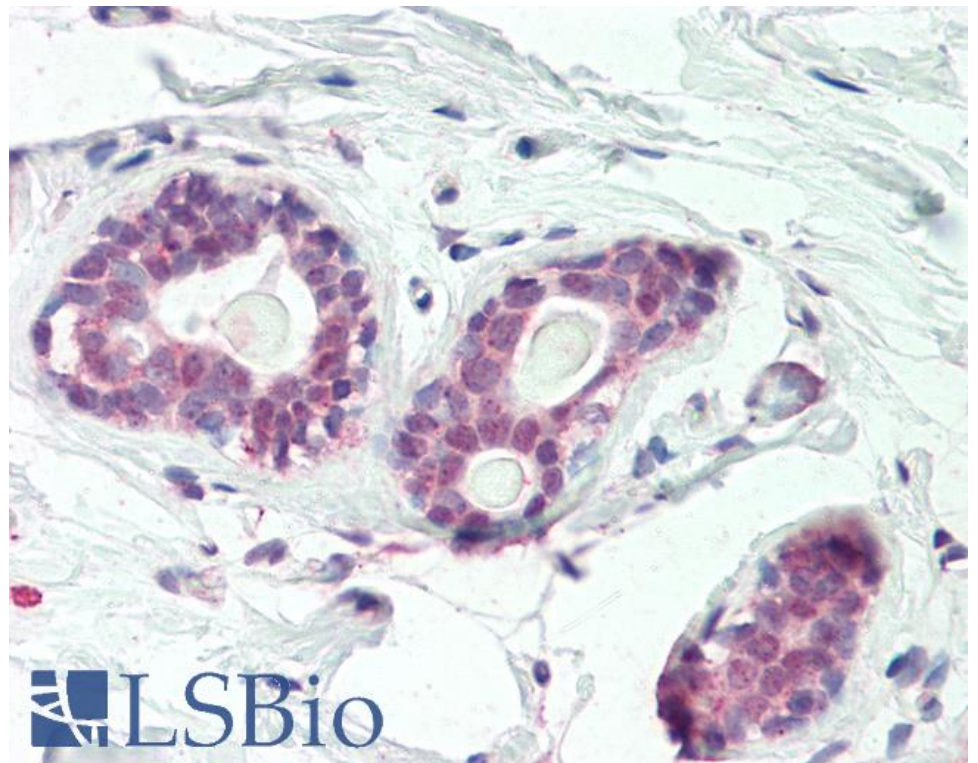
Species Reactivity

Tested: Human

Expected from sequence similarity: Human, Pig, Cow



EB12206 (1µg/ml) staining of HepG2 lysate (35µg protein in RIPA buffer). Detected by chemiluminescence.



EB12206 (5µg/ml) staining of paraffin embedded Human Breast. Steamed antigen retrieval with citrate buffer pH 6, AP-staining.